

**PTH**

# Steel structure logistic storage warehouse in Uruguay

1. Project No. : PT170454
2. Date : 2017
3. Location : Uruguay
4. Scale : 1000m<sup>2</sup>
5. Category : Steel Structure
6. Function : Warehouse
7. Characteristics : The design of the logistics storage center with single-layer portal frame structure, reasonable planning and design are carried out for the storage, logistics, people flow, etc



# DESIGN



PTH owns 100+ architect and engineers at home and abroad, to provide customized design service for client with different requirements. We use the relevant information data of construction projects as the basis of the model to build the building model, and simulate the real information of the building through digital information simulation.

At present, we have finished the Revit research and development of company's products, laying a solid foundation to finish design effectively and accurately and also presenting details and three dimensional effects of our company's products to customers.

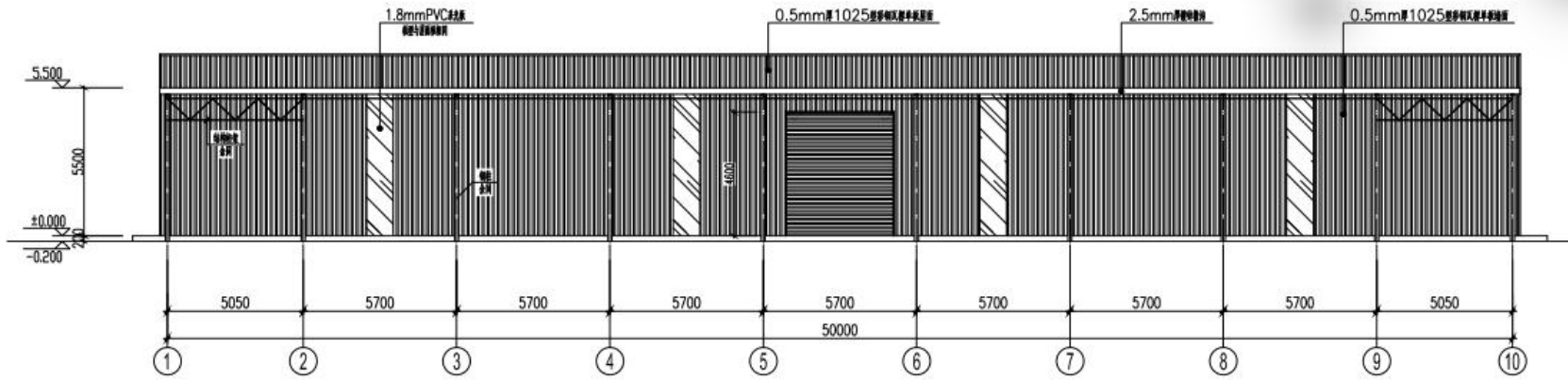
**Project features:**

The project is located in Uruguay. The warehouse is 50 meters long and 20 meters wide, with a building area of 1000 square meters. The structure is a single-layer portal frame structure.

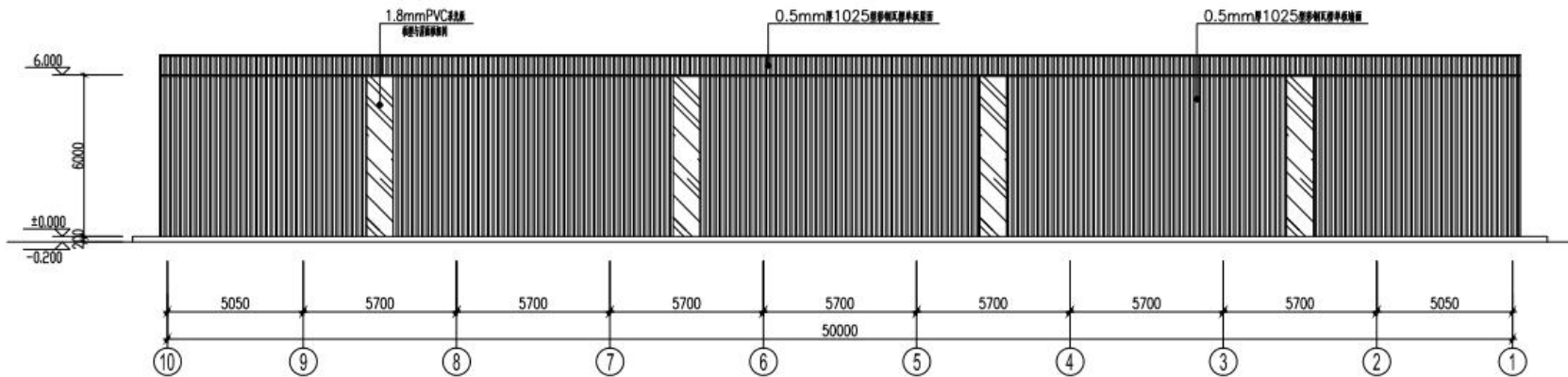
The color of steel structure warehouse roof panel is the customized product designated by the customer. The 0.5mm thick 1025 type color steel corrugated single sheet roof (color steel plate is aluminum zinc galvanized AZ100g / M2 + finish 20 / 5um).

This is a logistics and storage center next to the highway. Due to the abundant rainfall in the area, customers are worried that the roof lighting may have water seepage potential, so they choose the wall lighting.

# DESIGN



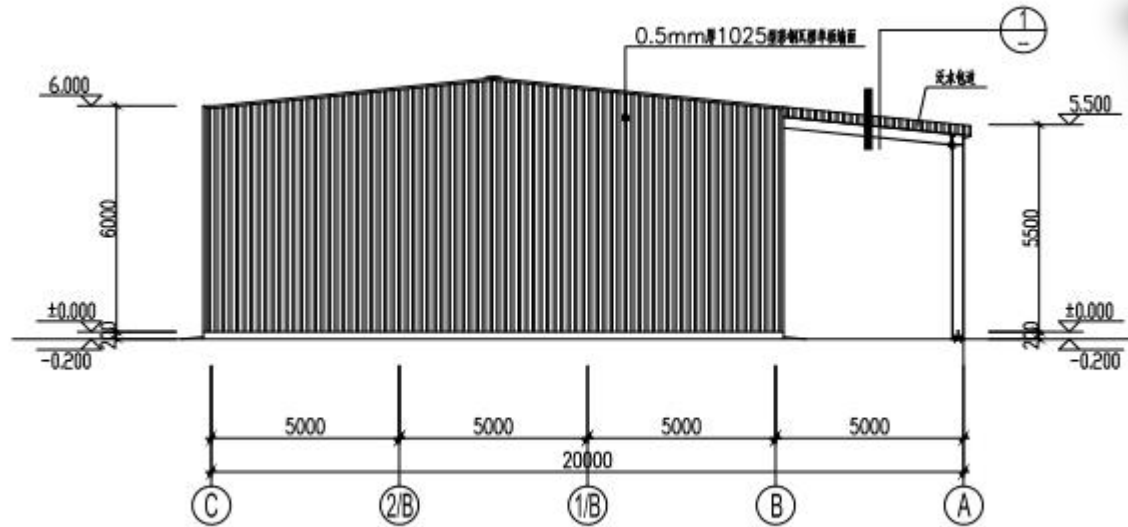
A轴立面图



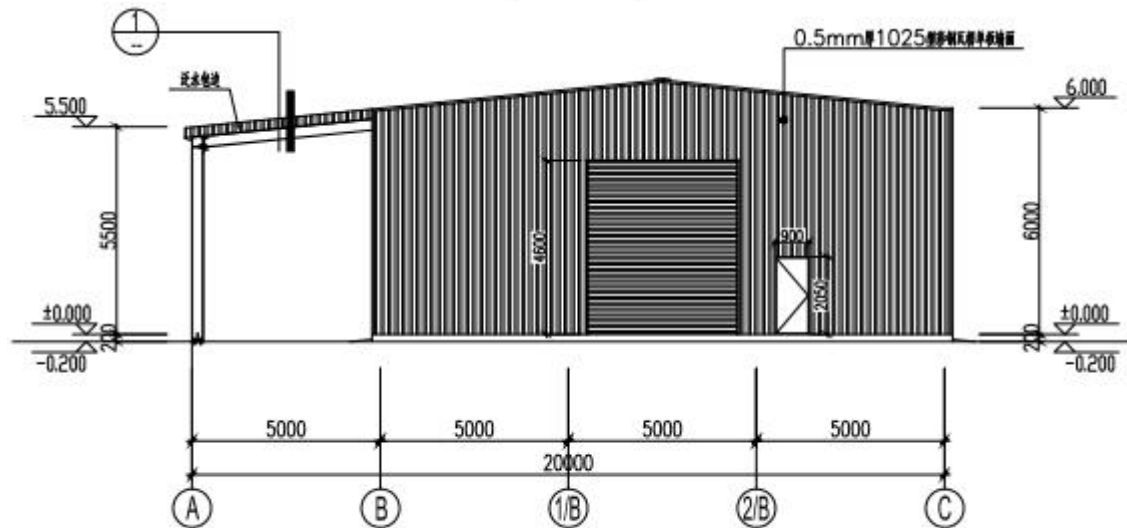
C轴立面图

The preliminary design is made in accordance to client' s requirement and local building code. After getting the permission by local authority, PTH will do the shop drawing for production.

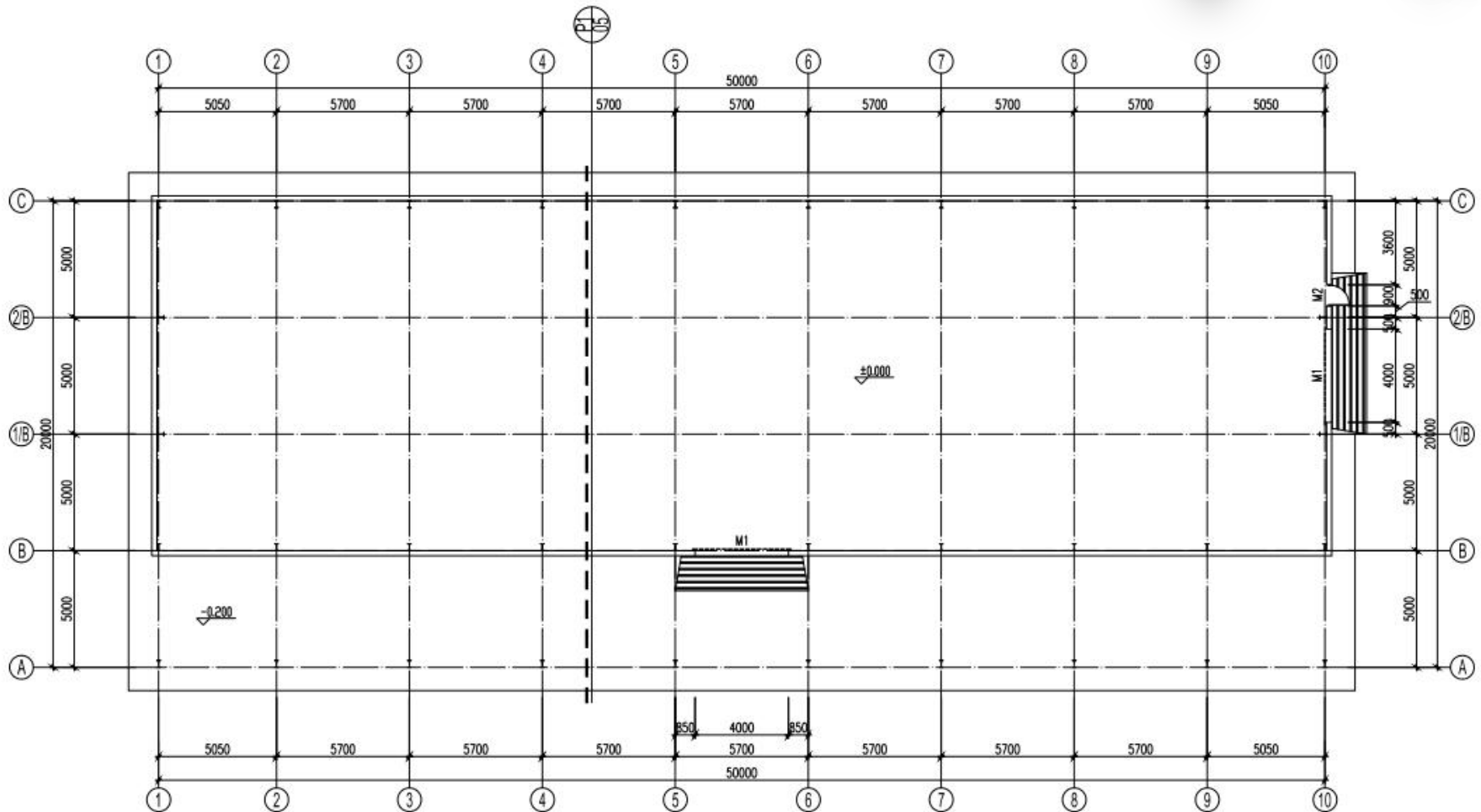
# DESIGN



1轴立面图



10轴立面图



底层平面布置图

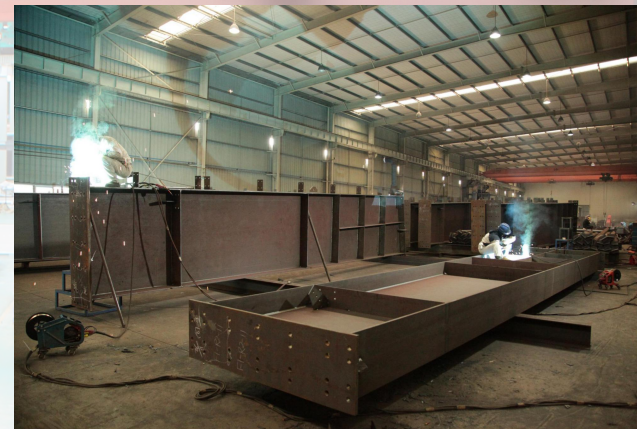


# PRODUCTION & DELIVERY



## PROCUREMENT :

PTH has a mature procurement supply chain, including product raw materials, kitchen and bathroom accessories, home equipment and other supporting facilities. Each year, PTH conducts quality assessments of suppliers, resolutely rejects unqualified suppliers, and guarantees the quality of products from the source.



## PRODUCTION :

PTH owns hundreds of fully automatic mechanized production lines, which ensures high production efficiency and timely delivery. In the manufacturing process, PTH can provide production progress reports to customers through pictures and video. PTH has a professional quality inspection team which takes strict quality control in each process, and make sure defect product never be delivered to client.



## TRANSPORTATION :

PTH, who has more than 20 years of international logistics experience. can provide customers with the best transportation routes, customs declaration, commodity inspection and other services, and truly realizes "door to door."



# PRODUCTION PICTURES

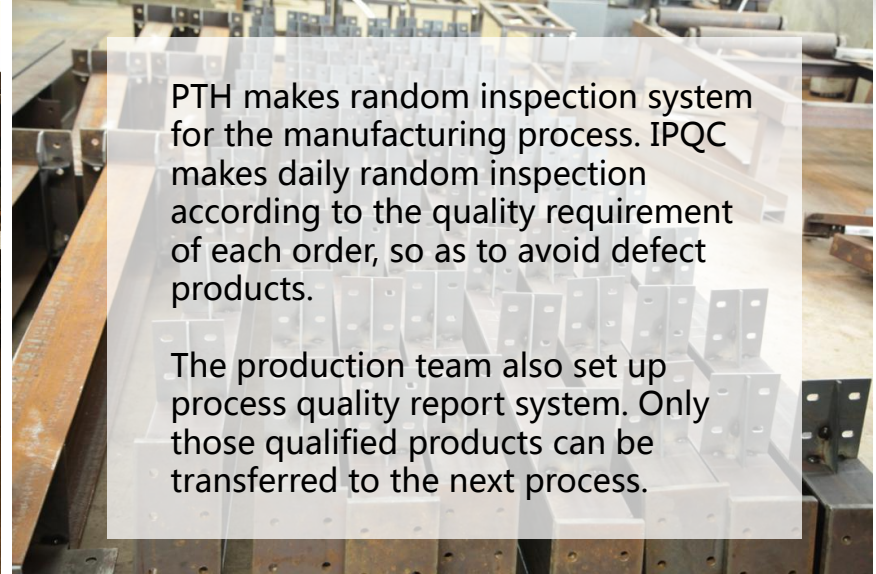


Quality is the life of a enterprise and the foundation of sustainable development. PTH strictly follows the ISO9000 quality system and make quality control in each process from material procurement to finish product delivery.

For the outsourcing raw material and accessories, it is reported to the ICQC team for inspection. ICQC will inspect according to “Raw Material Inspection Regulations” , make sure the material technical specs and quality meets GB standard, then upload the inspection record, QC document and test report to ERP system.



# PRODUCTION PICTURES



PTH makes random inspection system for the manufacturing process. IPQC makes daily random inspection according to the quality requirement of each order, so as to avoid defect products.

The production team also set up process quality report system. Only those qualified products can be transferred to the next process.

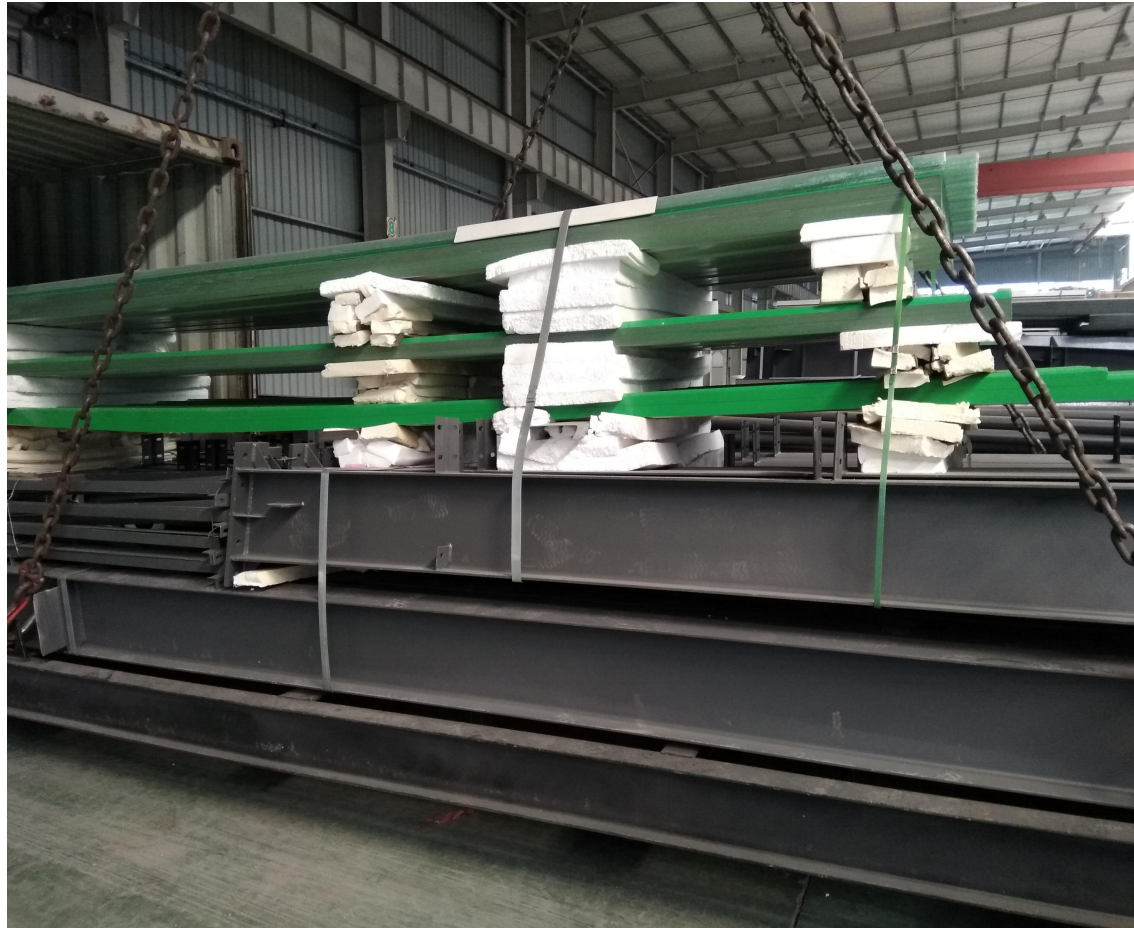




## PACKAGE & LOADING



PTH designs reasonable packaging scheme according to product structure characteristics / customer quality requirements. Total with 2\*40ft HQ loading. PTH adopts the unit design of parts in packaging, which effectively reduces the product packaging volume. Each unit part adopts independent small packaging, and multiple small packages are combined to form an overall packaging convenient for transportation and installation. And because of the overall packaging, it is convenient for loading and unloading, reducing the labor cost.





# PACKAGE & LOADING





# INSTALLATION



PTH will provide complete and detailed installation drawings for the product. PTH has professional photography and post-production personnel who can provide installation videos for the product and intuitively demonstrate the installation steps and installation details of the product.

PTH owns on-site installation guidance experience for dozens of projects such as Mozambican light steel villa resorts, Chilean container camps, etc. It can provide EPC construction services and technical guidance according to the needs of customers to ensure the smooth and safe construction of the houses required by customers and realize real "Check-in".

**URL : [www.pthhouse.com](http://www.pthhouse.com) / [www.putianhouse.com](http://www.putianhouse.com)**  
**E-mail : [inquiry@putianhouse.com](mailto:inquiry@putianhouse.com)**

# INSTALLATION





INSTALLATION



URL : [www.pthhouse.com](http://www.pthhouse.com) / [www.putianhouse.com](http://www.putianhouse.com)  
E-mail : [inquiry@putianhouse.com](mailto:inquiry@putianhouse.com)

# CLIENT FEEDBACK



We use BIM system to manage and operate the whole project. For the maintenance, PTH provide online technical support or maintenance service on the site per client requirement.

In the cooperation, PTH service is in place, and the feedback to customers is rapid, which has won great favor. In terms of products, PTH's design scheme is very superior, and the project quality is reliable, which can make customers feel at ease





# CLIENT FEEDBACK



# CLIENT FEEDBACK



**URL : [www.pthouse.com](http://www.pthouse.com) / [www.putianhouse.com](http://www.putianhouse.com)  
E-mail : [inquiry@putianhouse.com](mailto:inquiry@putianhouse.com)**



# CLIENT FEEDBACK

