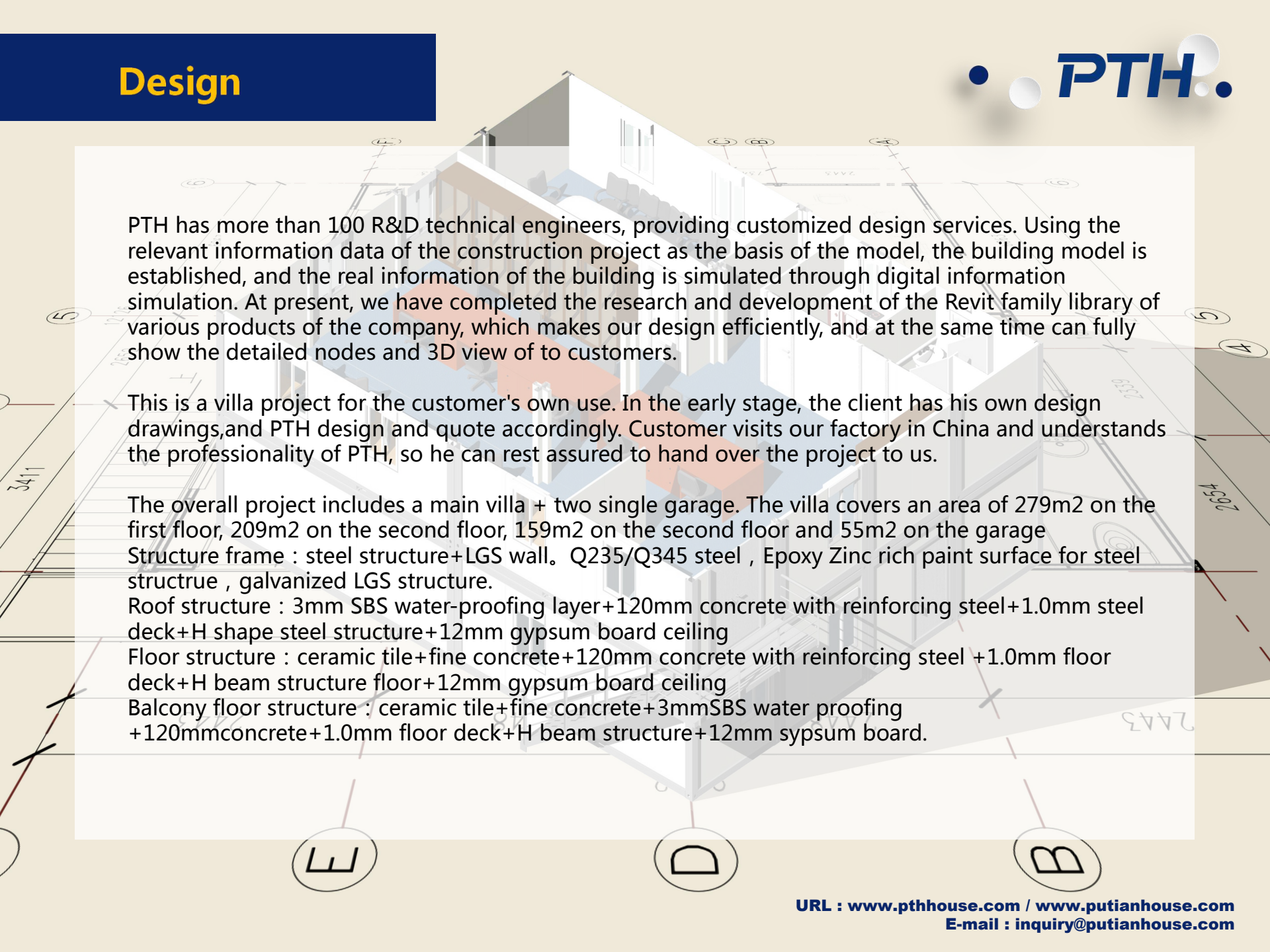


PTH

Private villa St. Martin

1. Project No. : PT180496
2. Project time : 2018-2019
3. Project location : St. Martin
4. Project scale : 618m² villa with 55m² garage
5. System : steel structure+light gauge steel
6. Project purpose: Private Villa
7. Project features: the traditional steel structure is combined with the new light steel structure, the main frame adopts the section steel frame, and the wall adopts the light steel keel.





PTH has more than 100 R&D technical engineers, providing customized design services. Using the relevant information data of the construction project as the basis of the model, the building model is established, and the real information of the building is simulated through digital information simulation. At present, we have completed the research and development of the Revit family library of various products of the company, which makes our design efficiently, and at the same time can fully show the detailed nodes and 3D view of to customers.

This is a villa project for the customer's own use. In the early stage, the client has his own design drawings, and PTH design and quote accordingly. Customer visits our factory in China and understands the professionalism of PTH, so he can rest assured to hand over the project to us.

The overall project includes a main villa + two single garage. The villa covers an area of 279m² on the first floor, 209m² on the second floor, 159m² on the second floor and 55m² on the garage

Structure frame : steel structure+LGS wall. Q235/Q345 steel , Epoxy Zinc rich paint surface for steel structure , galvanized LGS structure.

Roof structure : 3mm SBS water-proofing layer+120mm concrete with reinforcing steel+1.0mm steel deck+H shape steel structure+12mm gypsum board ceiling

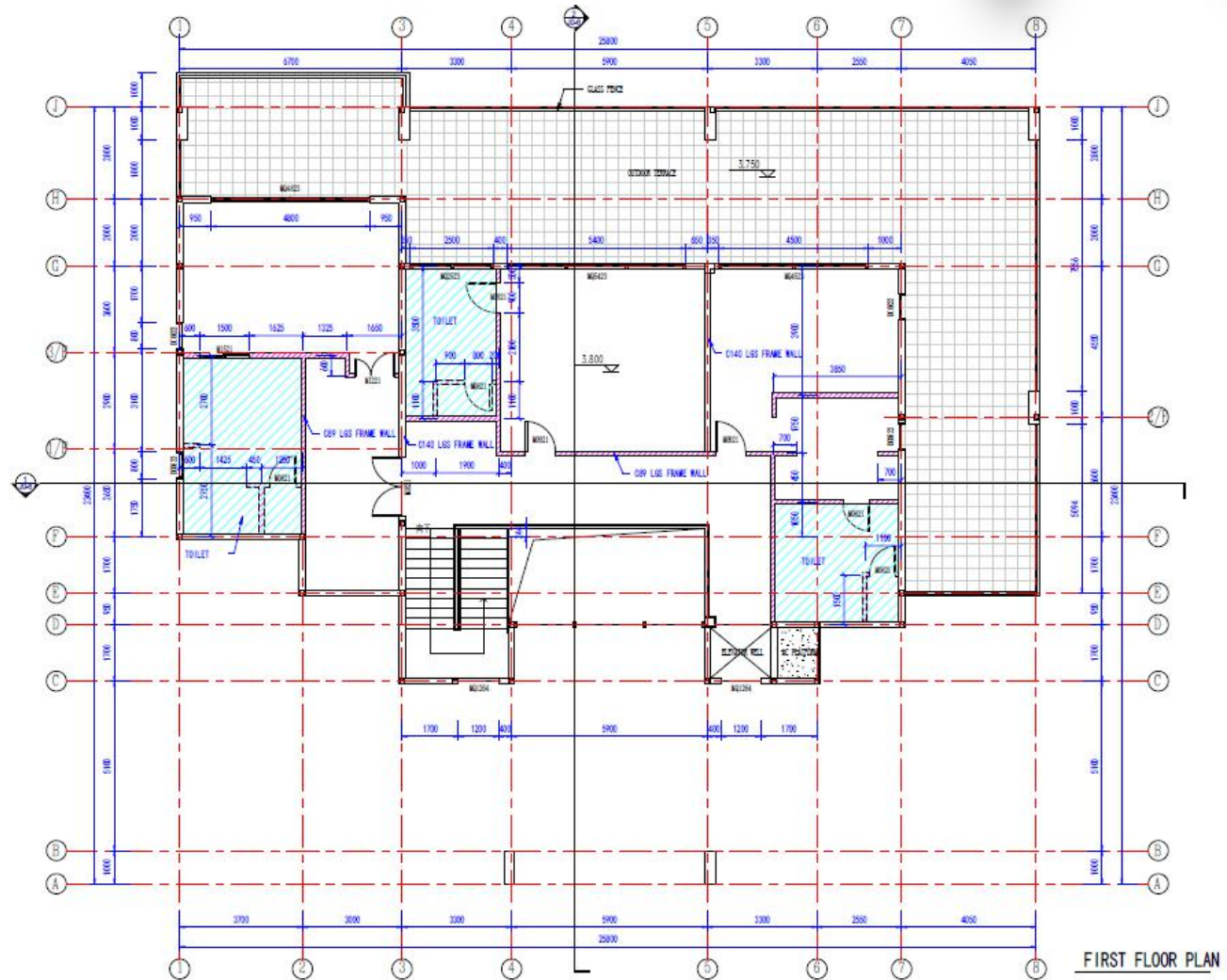
Floor structure : ceramic tile+fine concrete+120mm concrete with reinforcing steel +1.0mm floor deck+H beam structure floor+12mm gypsum board ceiling

Balcony floor structure : ceramic tile+fine concrete+3mmSBS water proofing +120mmconcrete+1.0mm floor deck+H beam structure+12mm sypsum board.

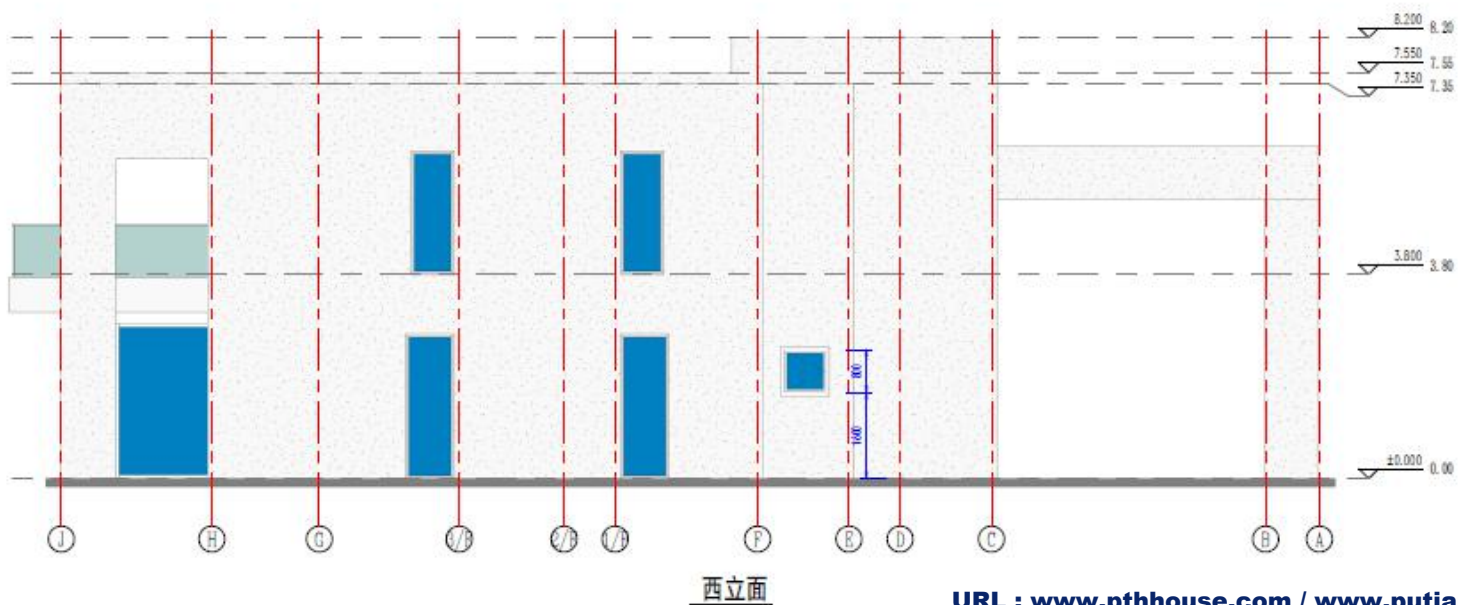
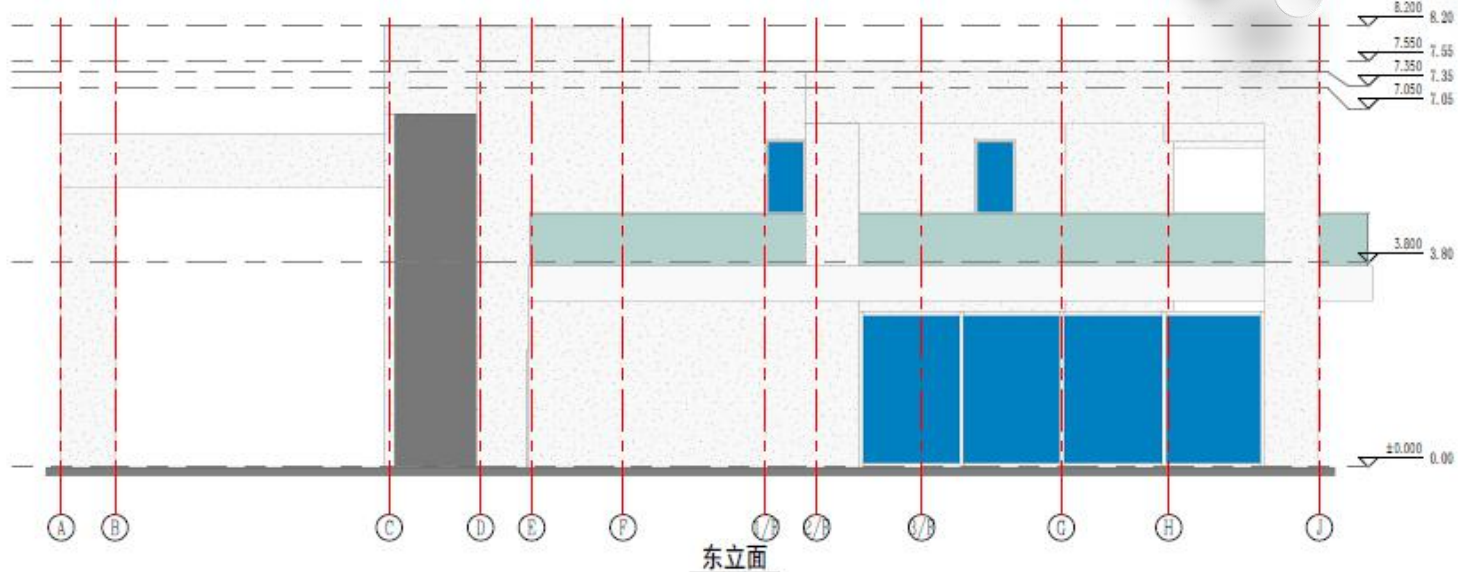
Design



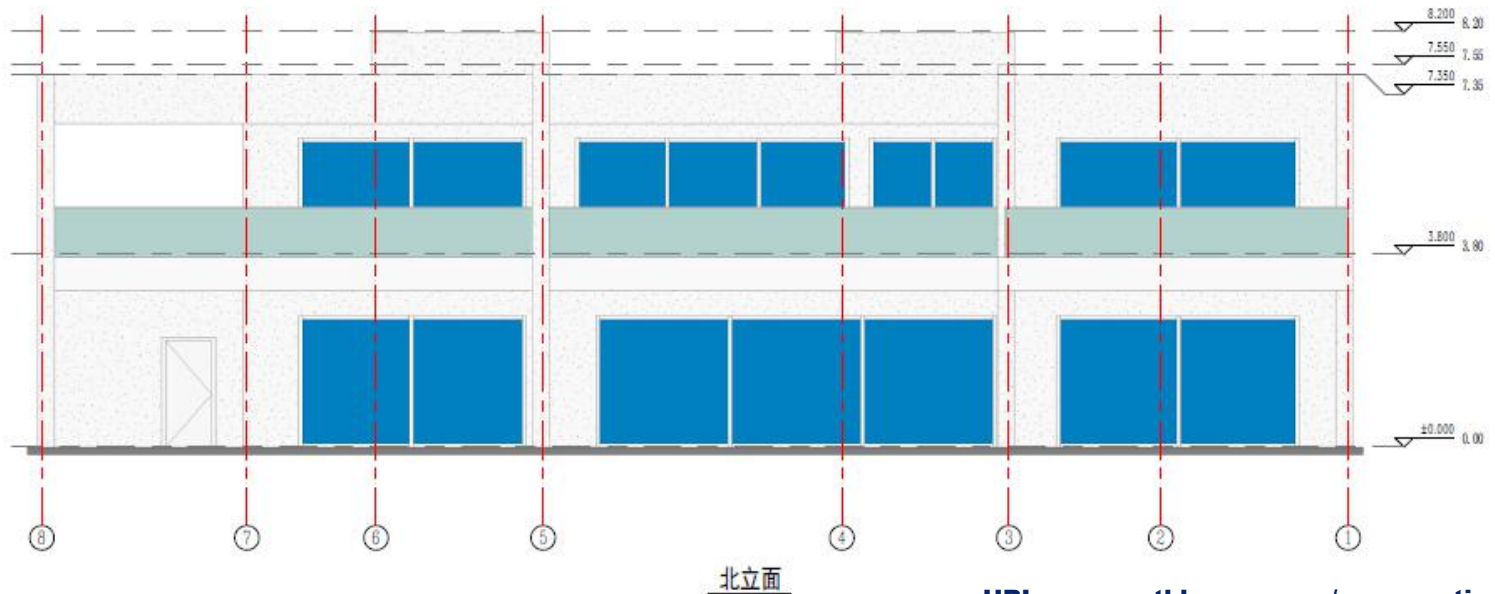
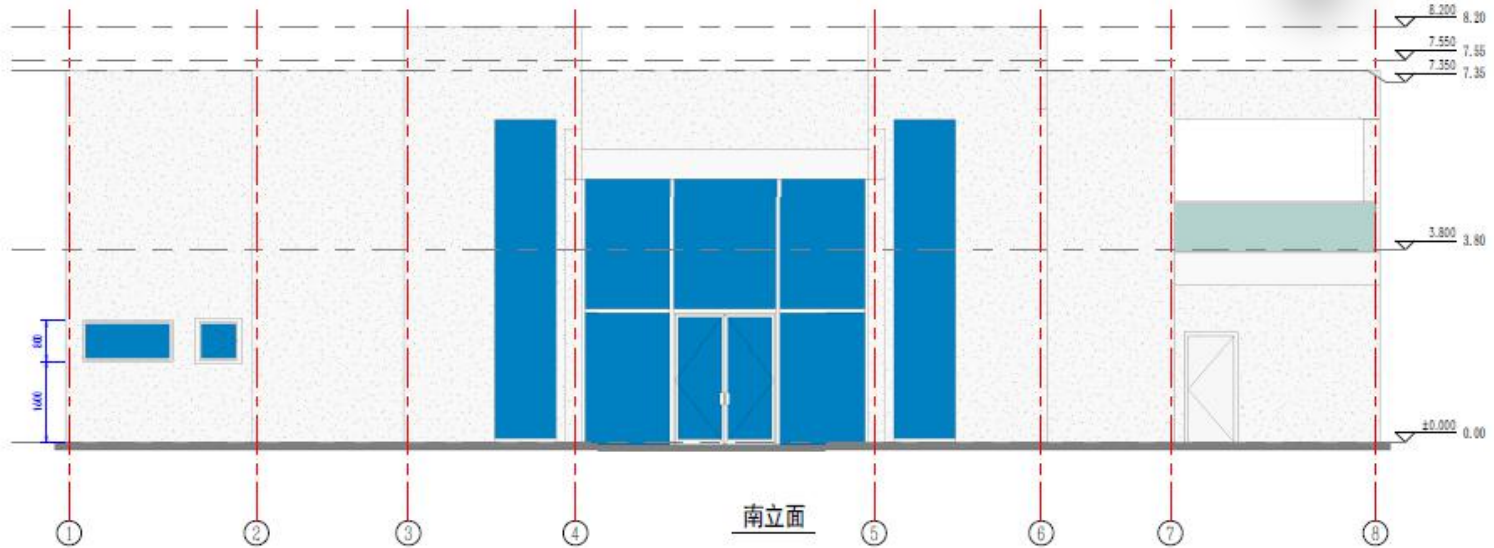
PTH's design drawings are designed according to customer needs and local building codes. After obtaining the local government's permission, they can finally continue to deepen the design after passing the local government's review.



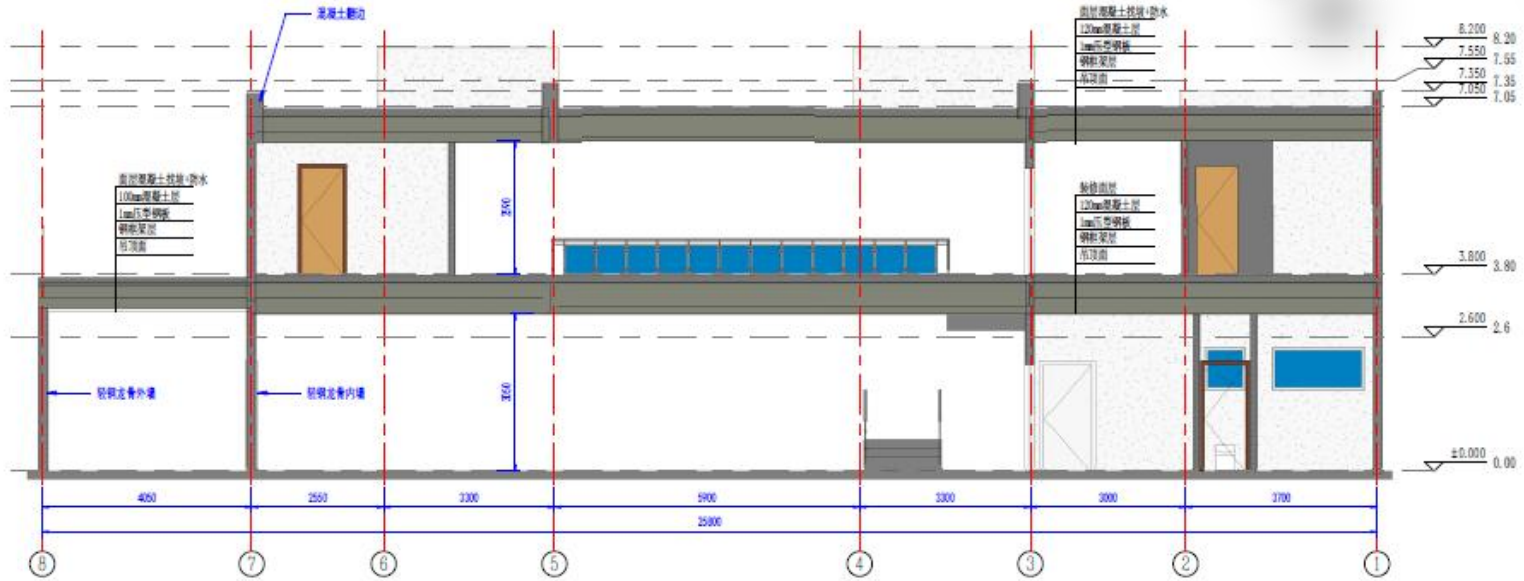
Design



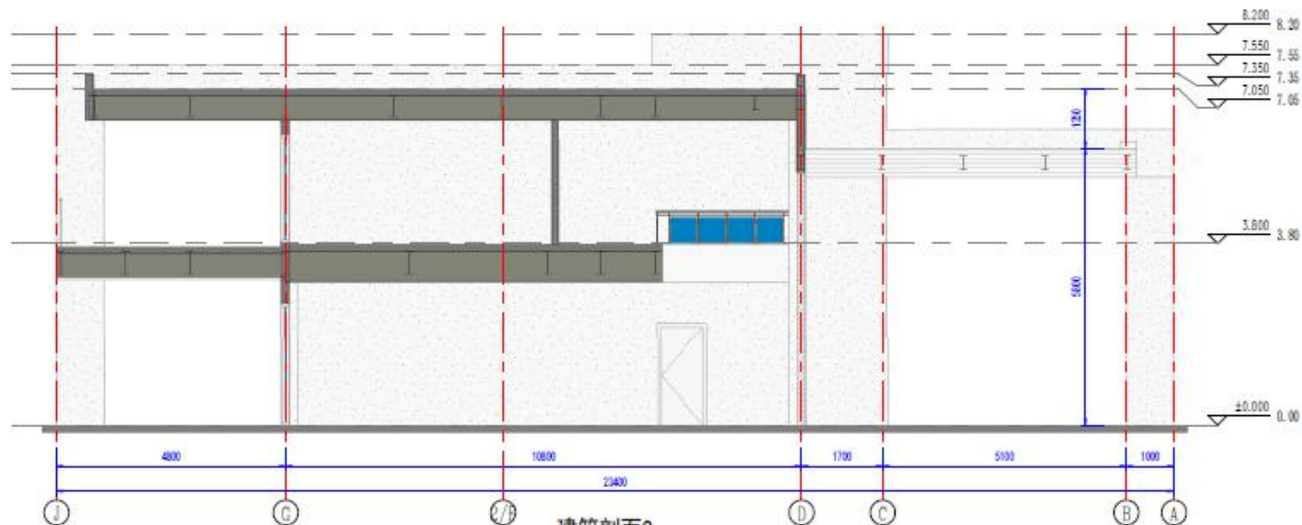
Design



Design

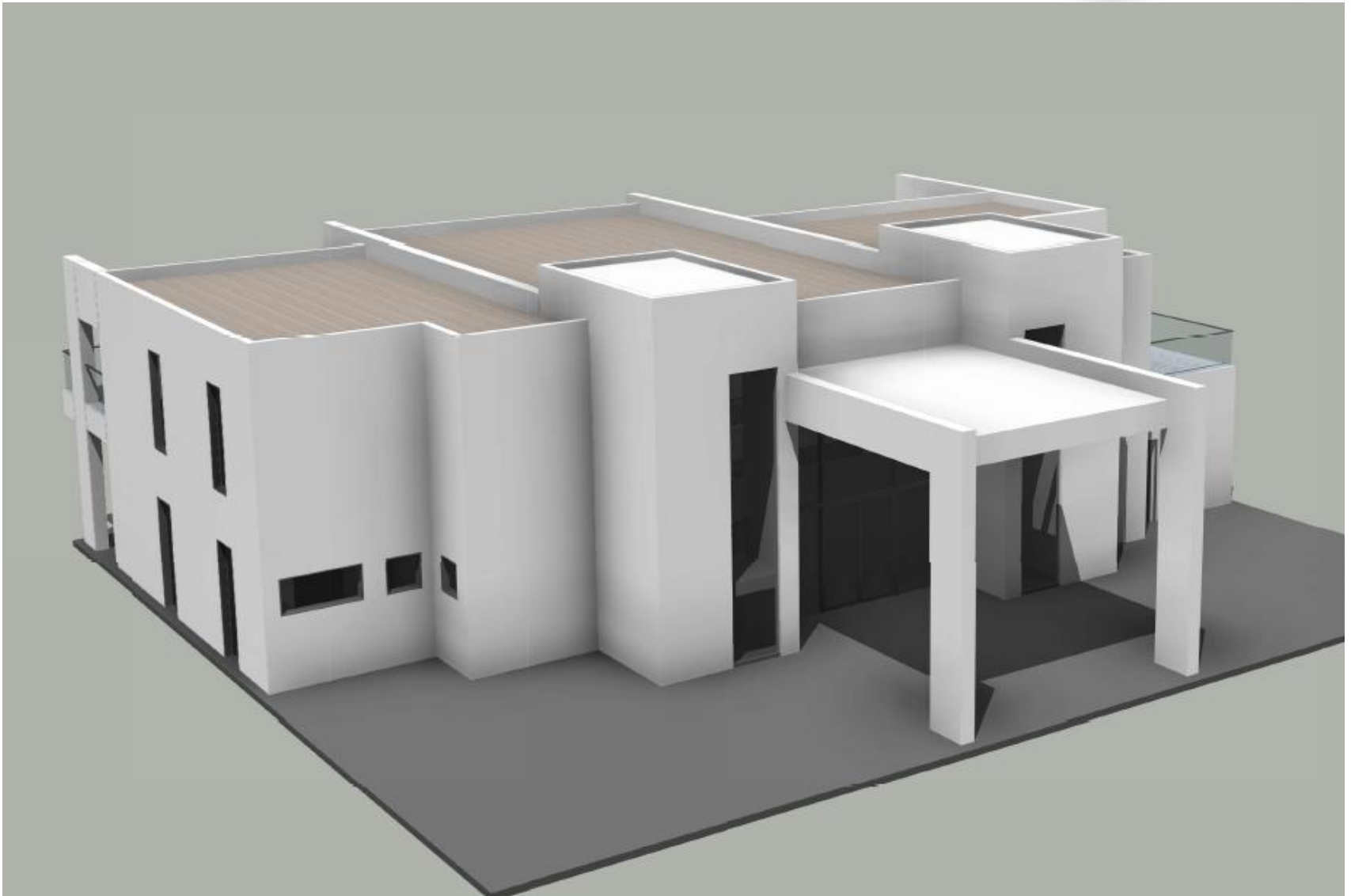


建筑剖面1



建筑剖面2

Design



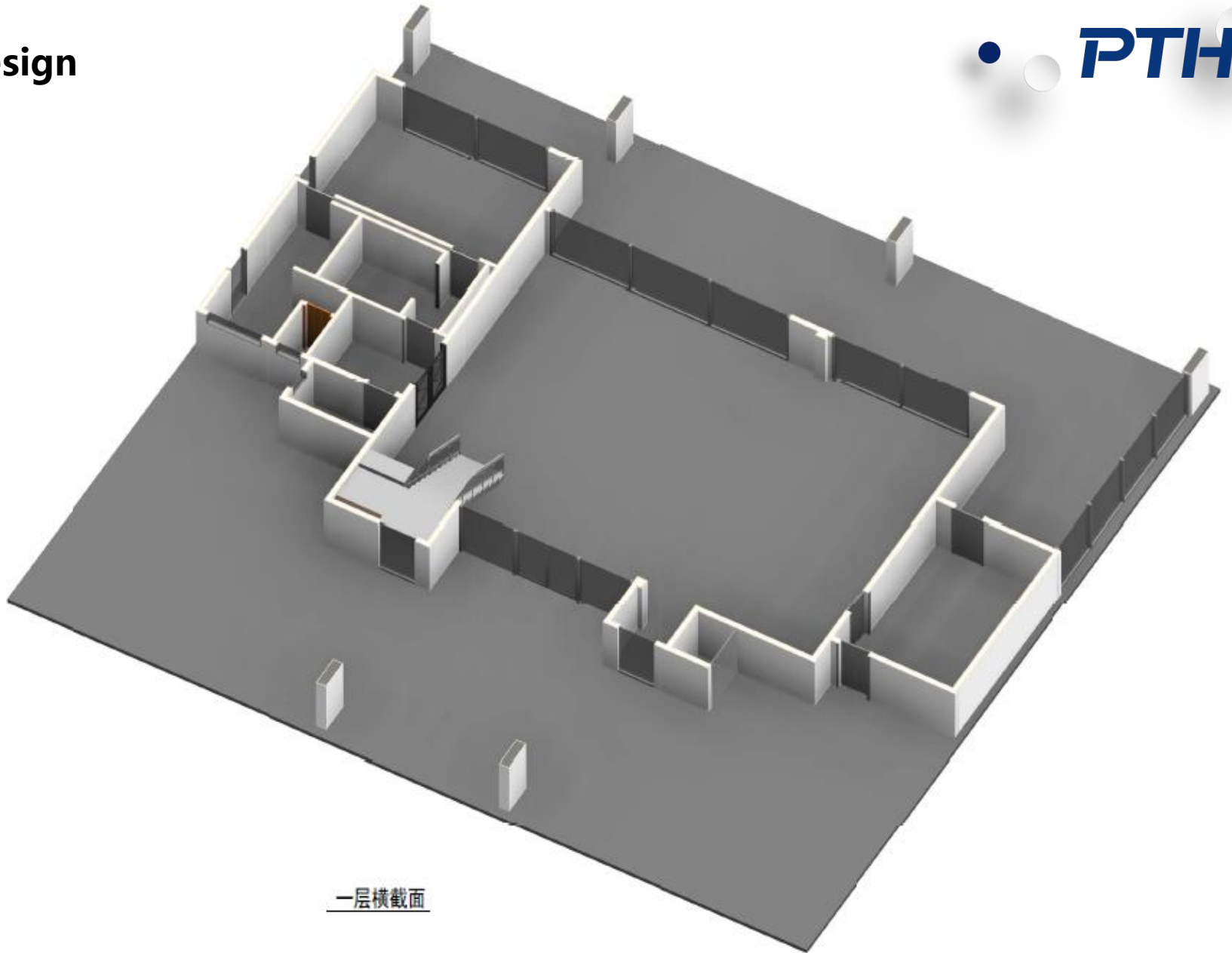
Design



Design

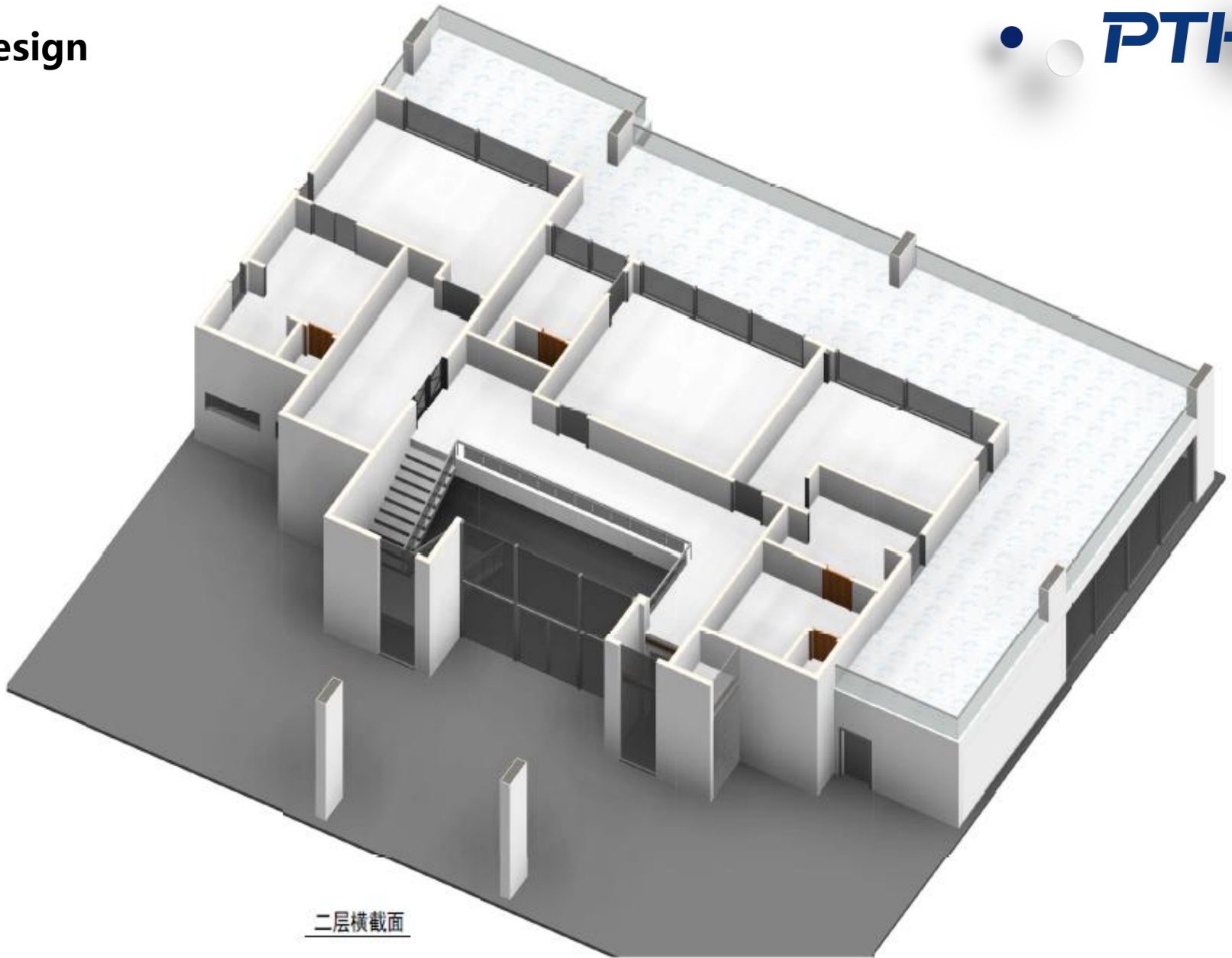


Design



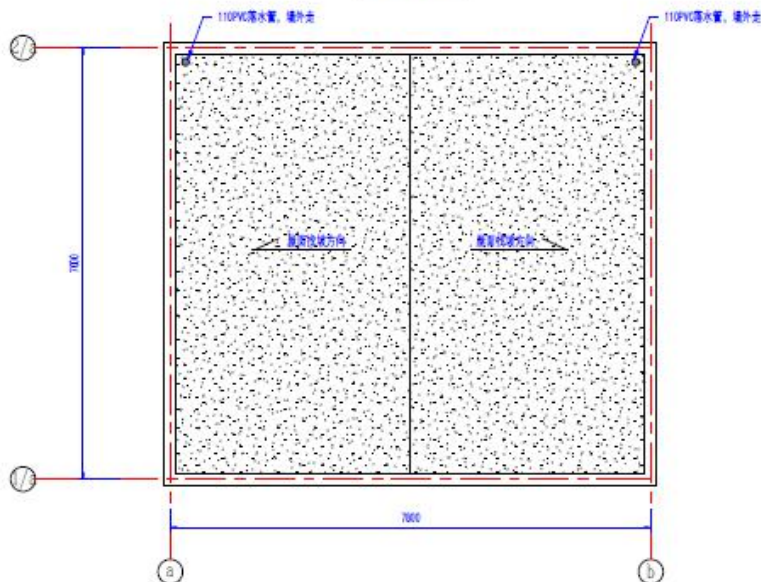
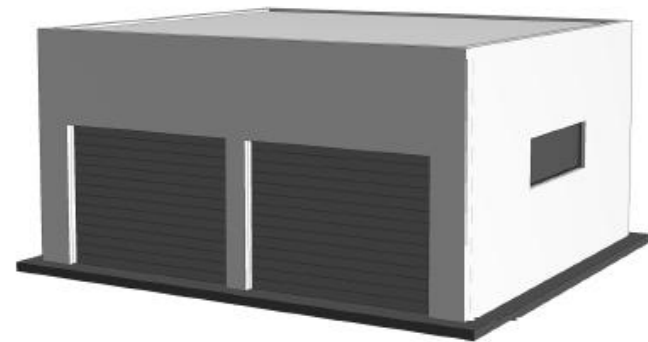
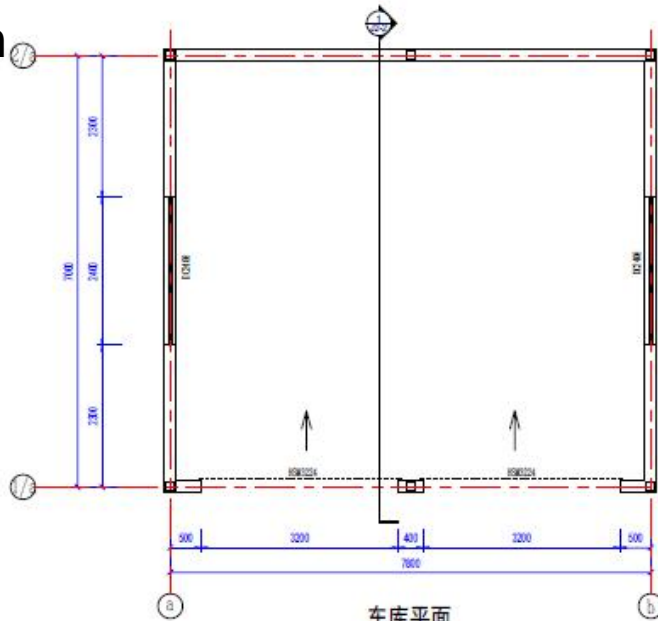
一层横截面

Design

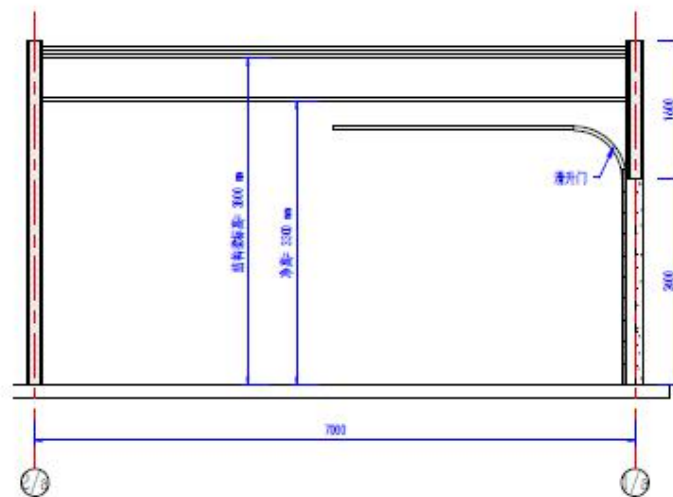
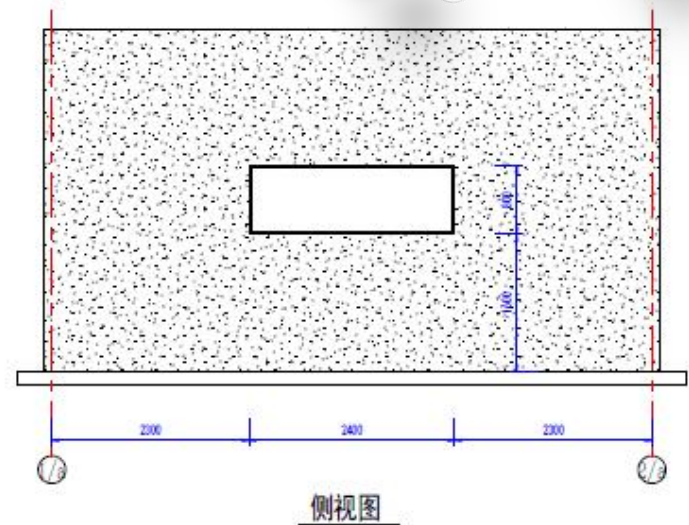
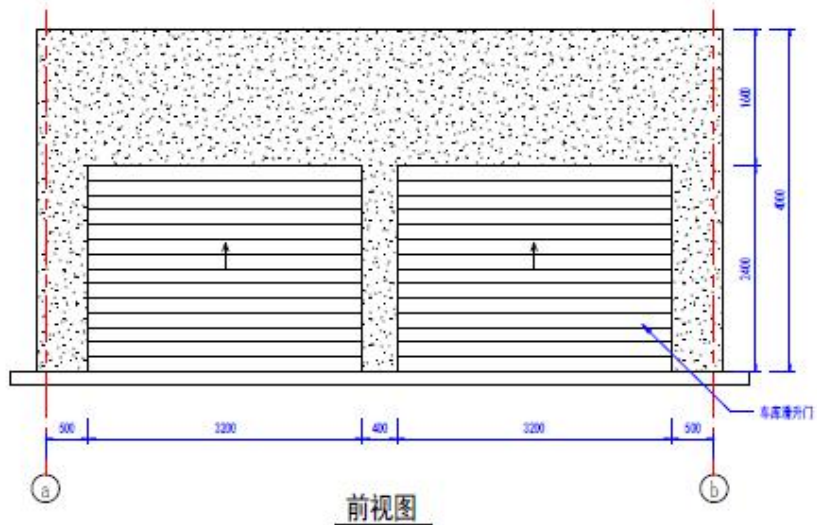


二层横截面

Design



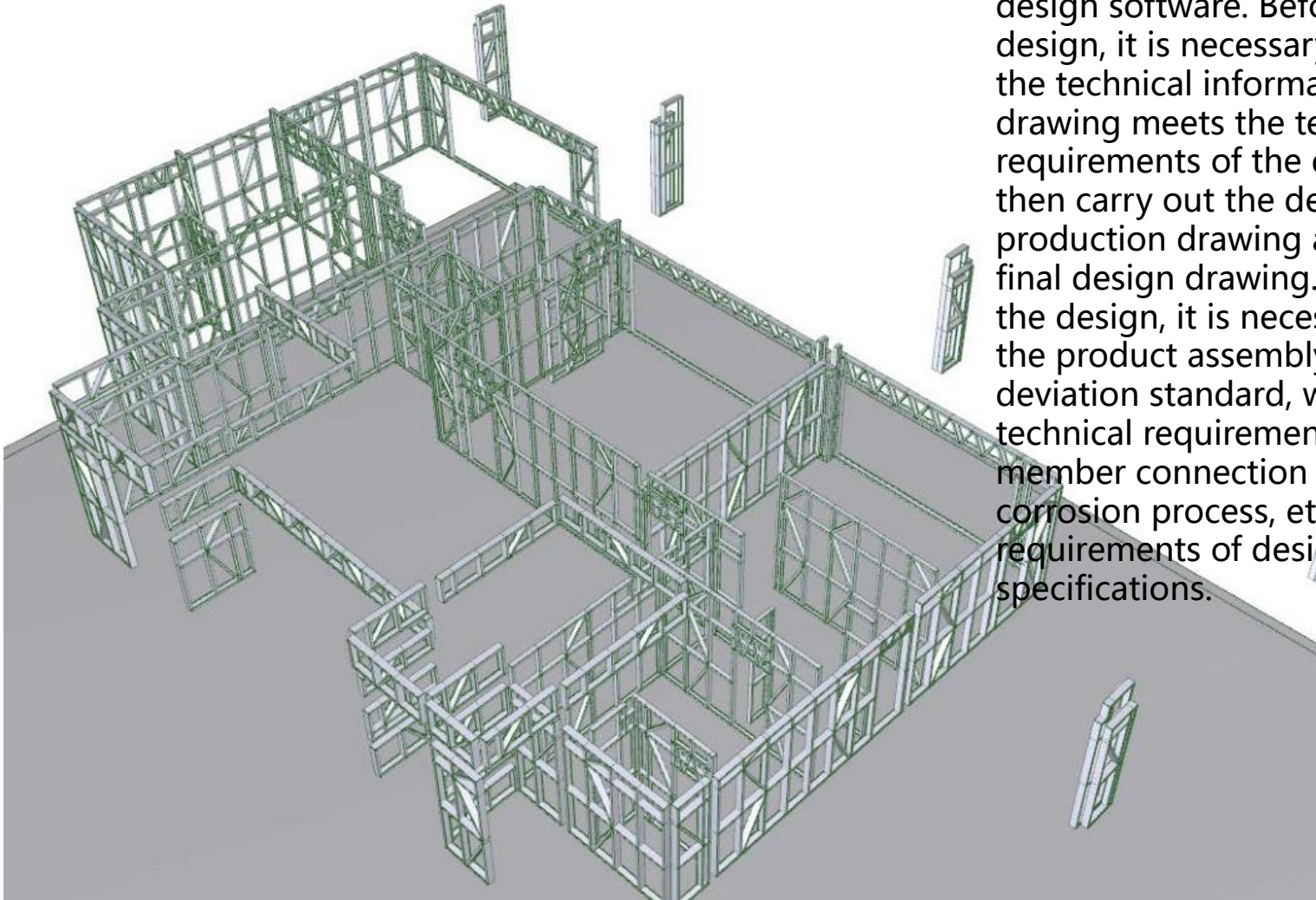
Design



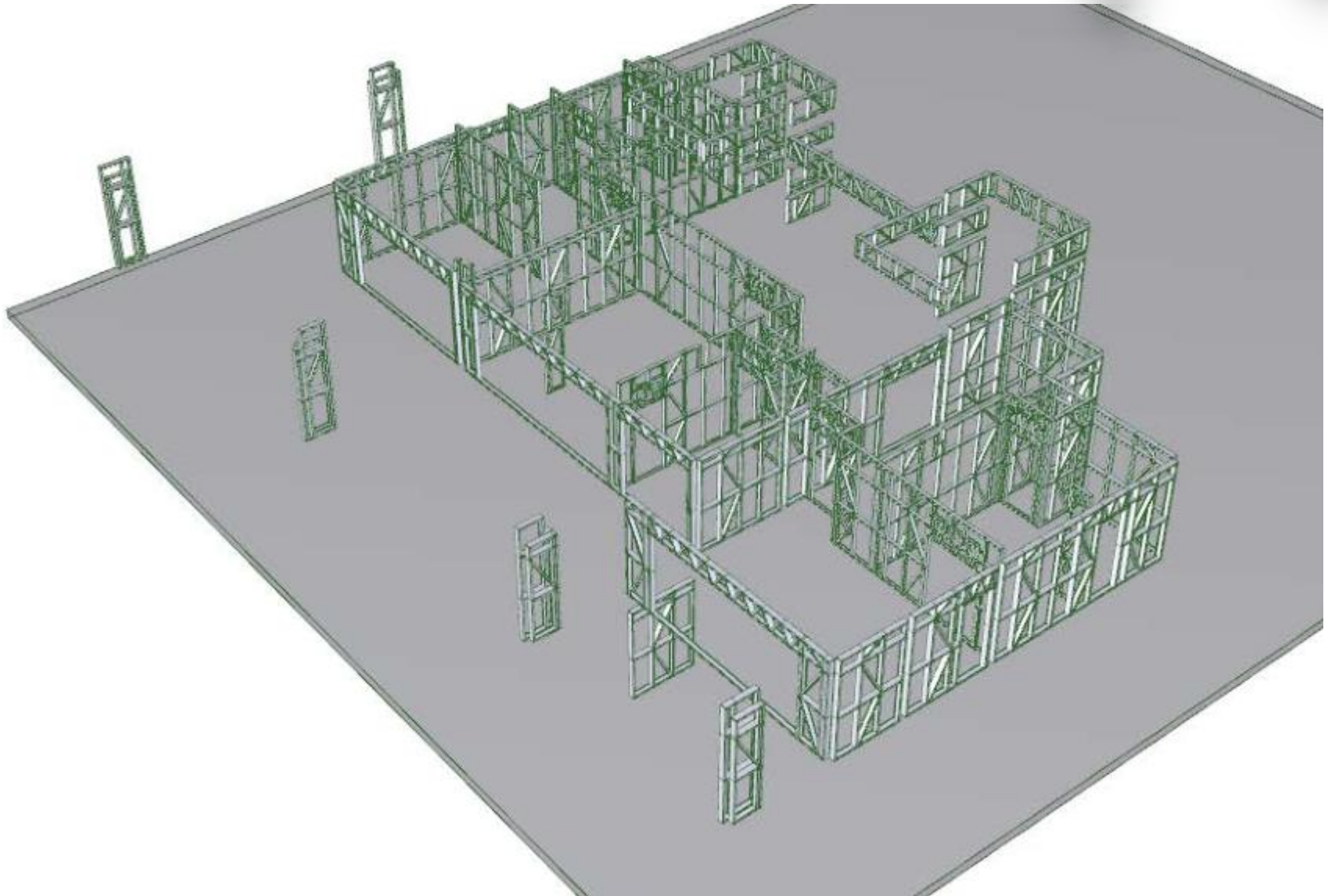
Deepen drawing



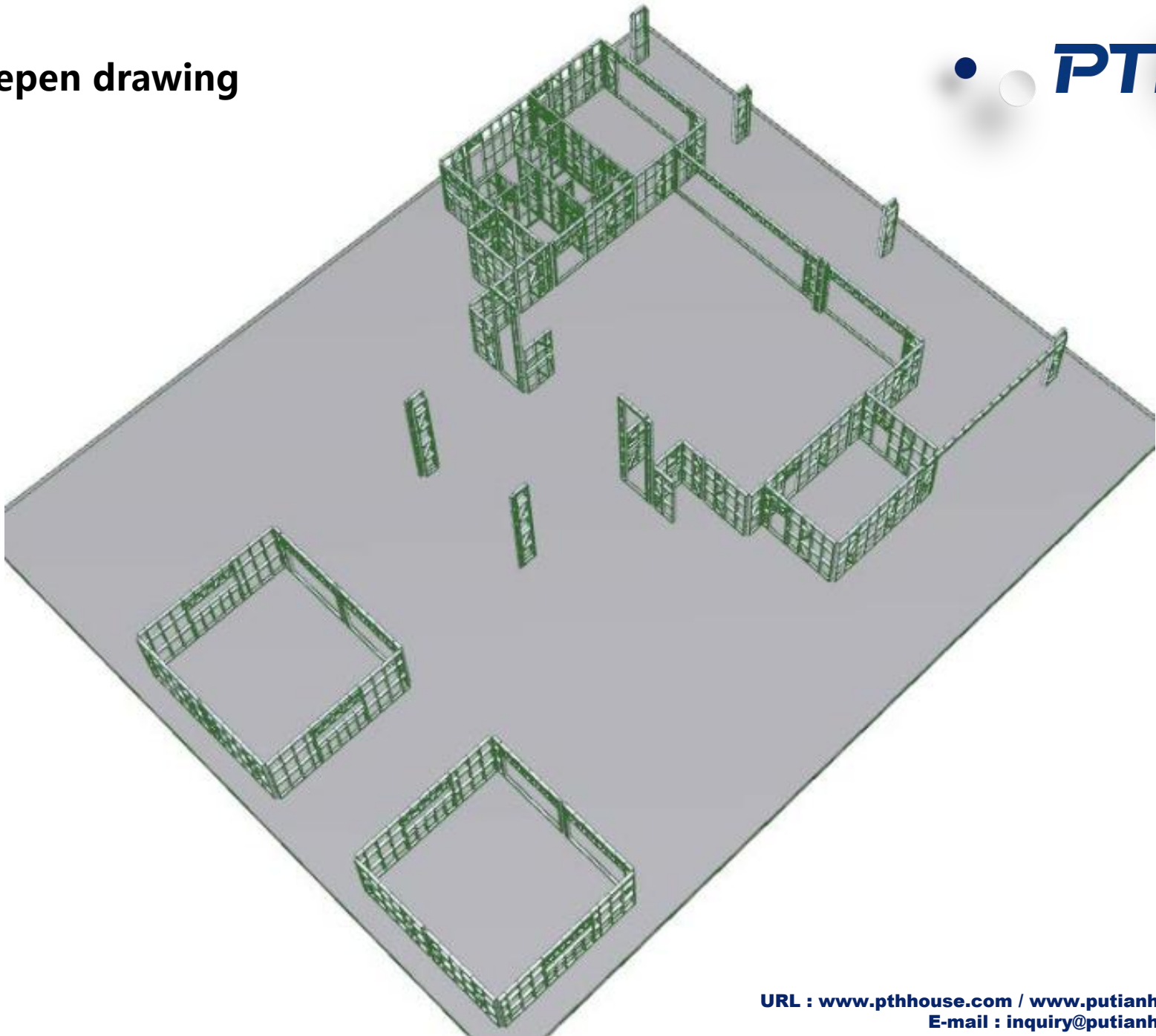
PTH deepening engineer adopts Tekla and framedcad structure deepening design software. Before the deepening design, it is necessary to check whether the technical information of the design drawing meets the technical requirements of the detailed design, and then carry out the detailed design and production drawing according to the final design drawing. When deepening the design, it is necessary to ensure that the product assembly dimension deviation standard, welding quality technical requirements, structural member connection nodes, product anti-corrosion process, etc. meet the requirements of design technical specifications.



Deepen drawing



Deepen drawing

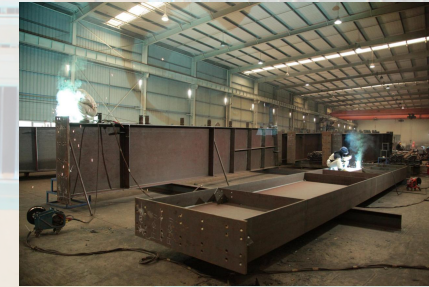


Production&Delivery



Purchase

PTH has a mature supply chain, includes raw materials, kitchen, bathroom accessories, household equipment and other facilities. PTH conducts quality assessment of suppliers every year, and rejects unqualified suppliers firmly to ensure the quality of goods.



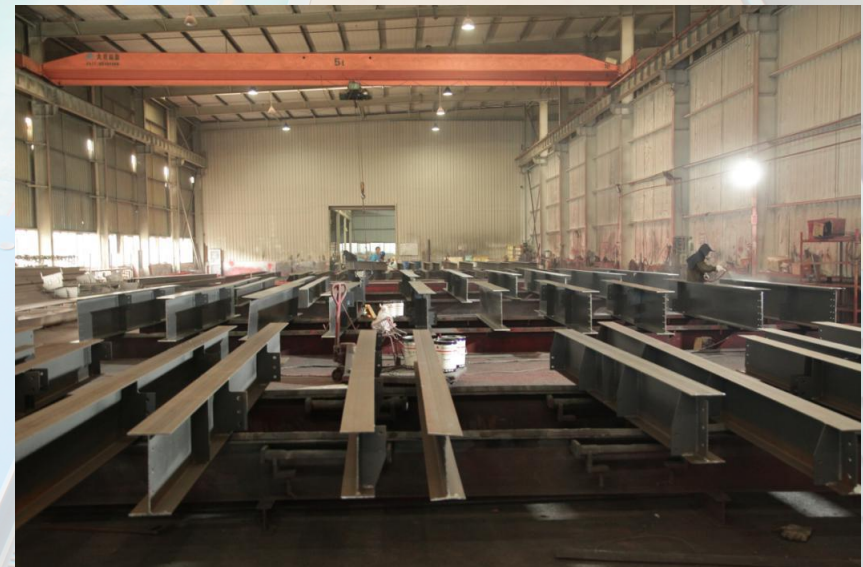
Produce:

PTH has hundreds of fully automatic production lines, which can be combined with efficient production arrangements to provide a strong guarantee for timely delivery of orders.

PTH has a professional quality inspection team. Every product process will undergo strict quality inspection, and products that do not meet the quality standards will never be shipped.

Transport:

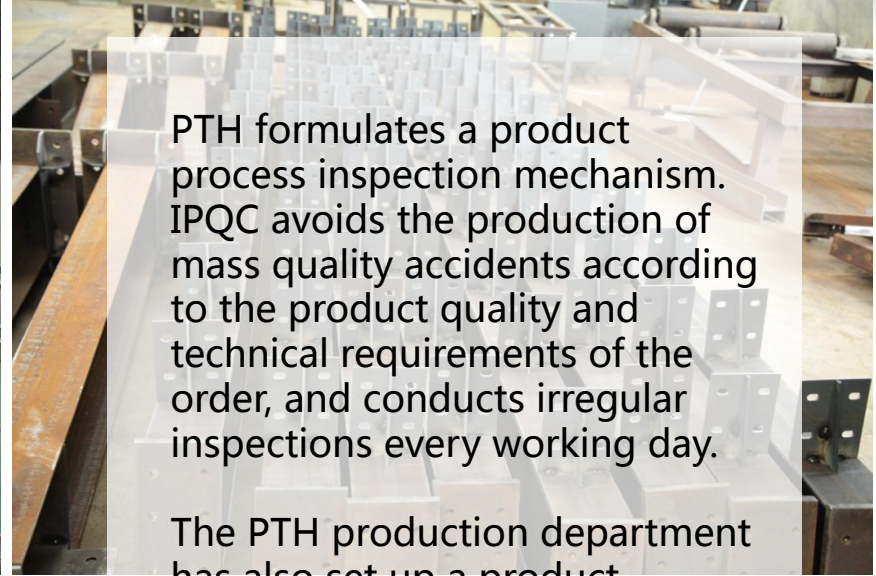
PTH has more than 10 years of international logistics experience, we can provide transportation routes, customs declarations, commodity inspections and other services, truly "door-to-door" products.



Quality is the core value and the foundation of the company's continuous development. PTH follows the ISO9000 quality system. From the beginning of raw material procurement, every link is strictly controlled.

After purchasing and supplying from the procurement department, the raw and auxiliary materials and outsourced products need to be inspected. ICQC conducts inspections according to the "Original and auxiliary material inspection standards" and confirms that the technical quality/information of the materials meets the requirements of the design specification GB. Upload quality documents and experiment reports to the ERP system.

Production view



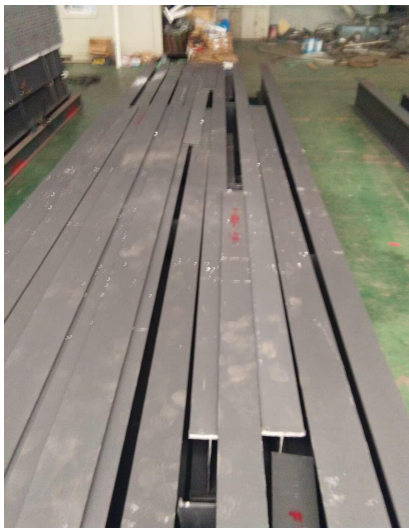
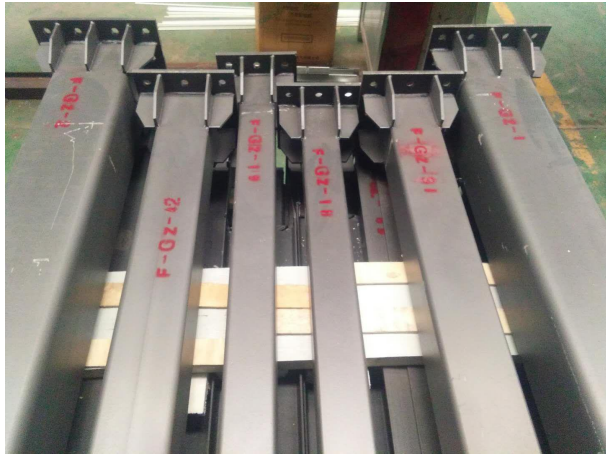
PTH formulates a product process inspection mechanism. IPQC avoids the production of mass quality accidents according to the product quality and technical requirements of the order, and conducts irregular inspections every working day.

The PTH production department has also set up a product process quality inspection mechanism, and any product can only enter the next process after confirmation.



Packing & Loading

PTH provide suitable solutions based on product structure characteristics/customer quality requirements. The steel structure parts are loaded by 10 pieces of 40HQ containers. To avoid damage during transportation, PTH adopts the unitized design of parts when packing, which effectively reduces the volume. The components are in independent small packages, so that it is easy to transport and install and save labor cost for client.



Packing & Loading



Installation



PTH will provide complete and detailed installation drawings for the products. Our professional team can provide installation video for the product, intuitively display the installation steps and installation details of the product.

PTH has on-site installation guidance experience for dozens of projects such as Mozambique Light Steel Villa Resort, Chile Container Camp, etc. It can provide EPC construction services and technical guidance according to customer needs to ensure the smooth and safe construction of projects.





**URL : www.pthhouse.com / www.putianhouse.com
E-mail : inquiry@putianhouse.com**

Installation



Installation



Installation

