

# Total specification of Steel structure

Specification Note: The project was designed based on China's current construction-related norms and protocols. Owners are requested to bring this design to the architectural design department of the local government for auditings. Only after been vetted and approved, before the construction.

## A. design consignment

- Based on China's current norms and protocols.
  - <Code for design of steel structures>(GB50017-2003)
  - <Loading code for design of building structures>(GB5009-2001)
  - <Technical code for design of cold-formed thin-wall steel structures>(GB5018-2002)
  - <Steel Structure Construction Quality Acceptance of norms>(GB50205-2001)
  - <Unified standard for design of building structures>(GB168-84)
  - <Code for seismic design of buildings>(GB5011-2001)
  - <High-strength bolts connecting of steel structure design, construction and acceptance of order>(JGJ82-91)
  - <carbon construction steel>(GB/T700-88)
  - <Specification for welding of steel structure buildings>(JGJ81-2002)
  - <Code for design of concrete structures>(GB5010-2002)
  - <Code for design of building foundations>(GB50007-2002)

## B. The designed elevation of this project is: ± 0.000, the relative positions determined at the site.

## C. summary of Structure design:

- The project developed by using of Tongji University's 3D3S Steel structure calculation software for structural calculations.
- The safety rating of this project is Grade 2, and the reasonable life span of this project is 25 years.
- The basis of a separate design
  - roof dead load: 0.25 KN/m<sup>2</sup>
  - roof live load: 0.4 KN/m<sup>2</sup>
  - wind load: 0.5 KN/m<sup>2</sup>
  - snow load: 0.0 KN/m<sup>2</sup>

## D. Material

- Main components' material of Steel frame beam- pillar is Q345B. Its material chemical composition and mechanical properties should be in line with national standards. <carbon construction steel> (GB/T700-88)
  - Purkin use cold-formed steel, with quality standard<general Cold forming sectional steel>(GB6723-86).
- welding rod:
  - a.Q235B steel weld by hand,adapt E43XX style welding rod,the function<carbon steel covered electrode>(GB/T5117-95). Adapt automatic or semi-automatic,use <Welded wires>(GB1300-77) with H08 or H08A Wire with the manganese-based or high-manganese-based flux.
  - b.Q235B steel weld by hand,adapt E50XX style welding rod, Adapt automatic or semi-automatic,use<Welded wires>(GB1300-77) with H08MnA wire with the manganese-based or high-manganese-based flux.

- black rough bolt,nuts and washers adapt(GB700-88) with Q235 steel,the heat treatment,Productive and technical requirements will be to in line with(GB6700-86),(GB41-86),(GB95-85).
- The10.9 grade high-strength bolt adopt the big orthohexagonal bolt,its function will consistent with national standard <Alloy structure steel-Technical requirements>(GB3077-82) with 20MnTiB steel or 40B steel or with consistent with national standard<High-strength steel with large hexagon head bolts, large hexagon head nuts, washers and technological conditions>(GB1231-91)with 35VB steel,the pre-pull of high-strength bolt is:M16\*P=100KN M20\*P=155KN.

## E. Manufacture of Structure:

- Steel structure should be in strict accordance with<GB50205-01>.All components is crucial to enlarge:isample to check.After size correct,then progressive blanking will be pre-assembly inspection before delivery,if there production arch camber should be appropriate to reduce the actual beam deflection.
- Steel processing should be carried out before the correction, to make it straight.
- welding requirements:
  - Component commissure plate and column, the connections of end-plate and beam department weld and column flange:The Butti Weld of ventral shield should be adopted through the complete fusion weld and quality should be consistent with the 2grade weld quality requirements,Others as per 3grade welded quality demand.
  - When welding,Should choose a reasonable welding sequence,to reduce the steel produced in the welding stress and welding distortion, or Preheat hammering and overall tempering and other methods to achieve the same purpose.
  - When welding of frame beam,pillar, the flange and the ventral shield that the location of seams staggered more than 250mm.
  - When the drawing do not indicate the leg of a fillet weld,The footsize of its size H welding thin pieces of equal thickness, the weld length equal to the length of component overlap, and are full welding.

## F. Installation of structure:

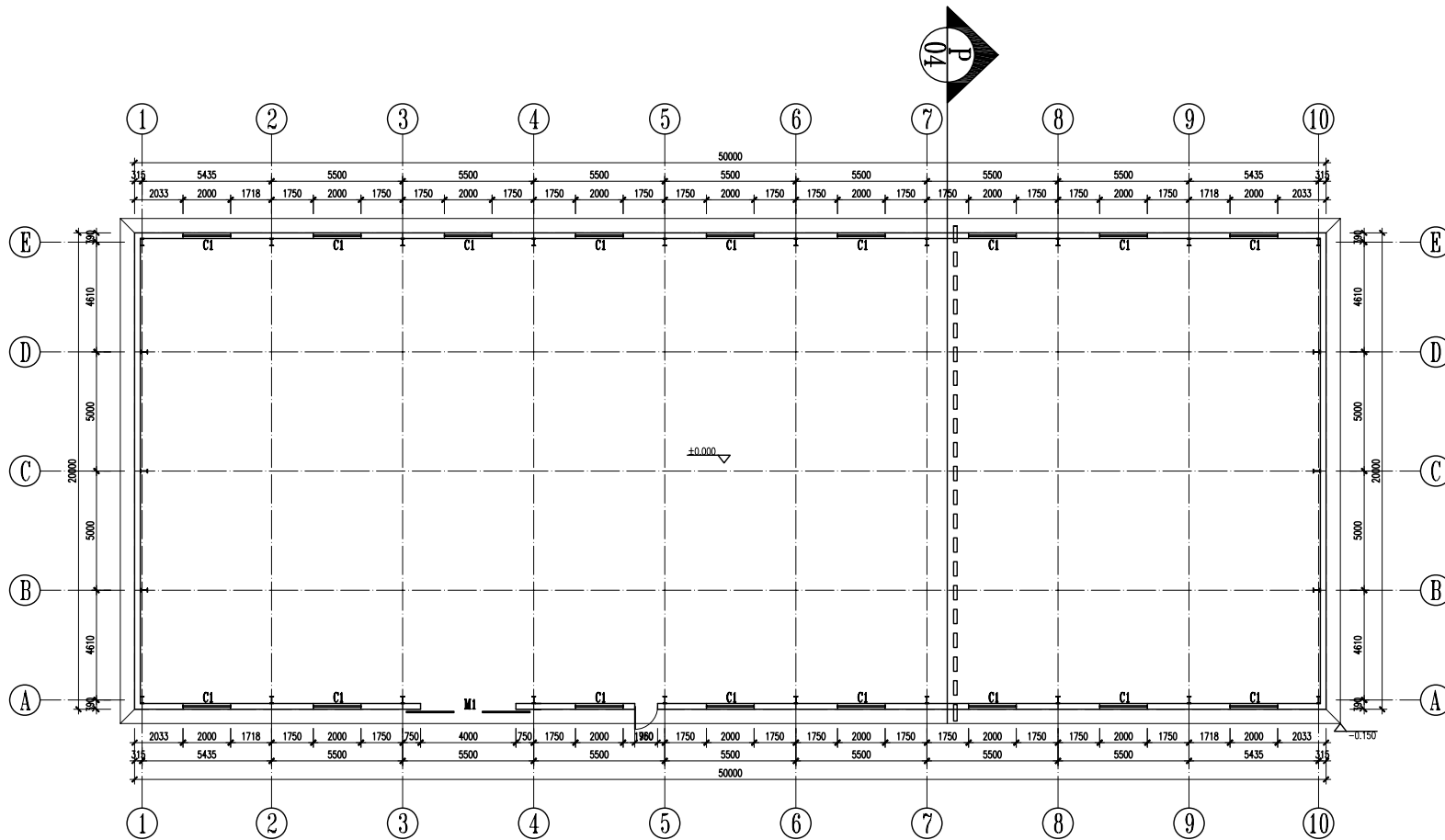
- Before with pre-installation component to conduct a comprehensive inspection,such as the qty of component,length,perpendicularity, Joint installed between the bolt hole size with the design requirements.
- When lifting,should take appropriate measures to prevent excessive bending deformation.
- After lifting the structure in place,Should be fastened/timely support and other components connected to guarantee the stability of components.
- All of the structure lifting,must be in the lower part of the structure in place, correction and fastened support component,then would be required.
- Construction requirements of High-strength bolt:
  - High-strength bolt hole should be adapted drilled hole.
  - before installation,match with the bolts and nuts,and nut with a small amount of mineral oil.
  - In the high-strength bolts connecting the framework of the contact elements to deal with the use of sandblasting, anti-slip coefficient  $\mu \geq 0.45$ , may not paint or defaced.

## G. Descaling and paint of steel structure:

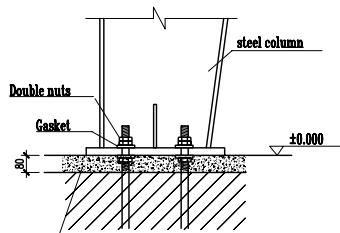
- Before coating of the components,must deal with surface shot blasting and derusting,the derusting grade is Sa2.5.
- The first painting with red lead paint, surface is alkyl ready mixed paint.
- Steel structure in the use of process,should be conducted every three years paint maintenance, and timely maintenance of local paint.
- This note as a general steel plant,If the production of corrosive gases or high temperature and humidity should be dealt with separately.

## H. If there is anything else not in this specification,please be strict in accordance with current national norms and protocols relating to the construction.

Project name	Item	Project No.	designer	Proportion
20x50x6m warehouse	Total specification	PTL1W100	xxx	1:100
		Catagory	Date	Page
		Proposal	2012.09.10	01



Bottom plan

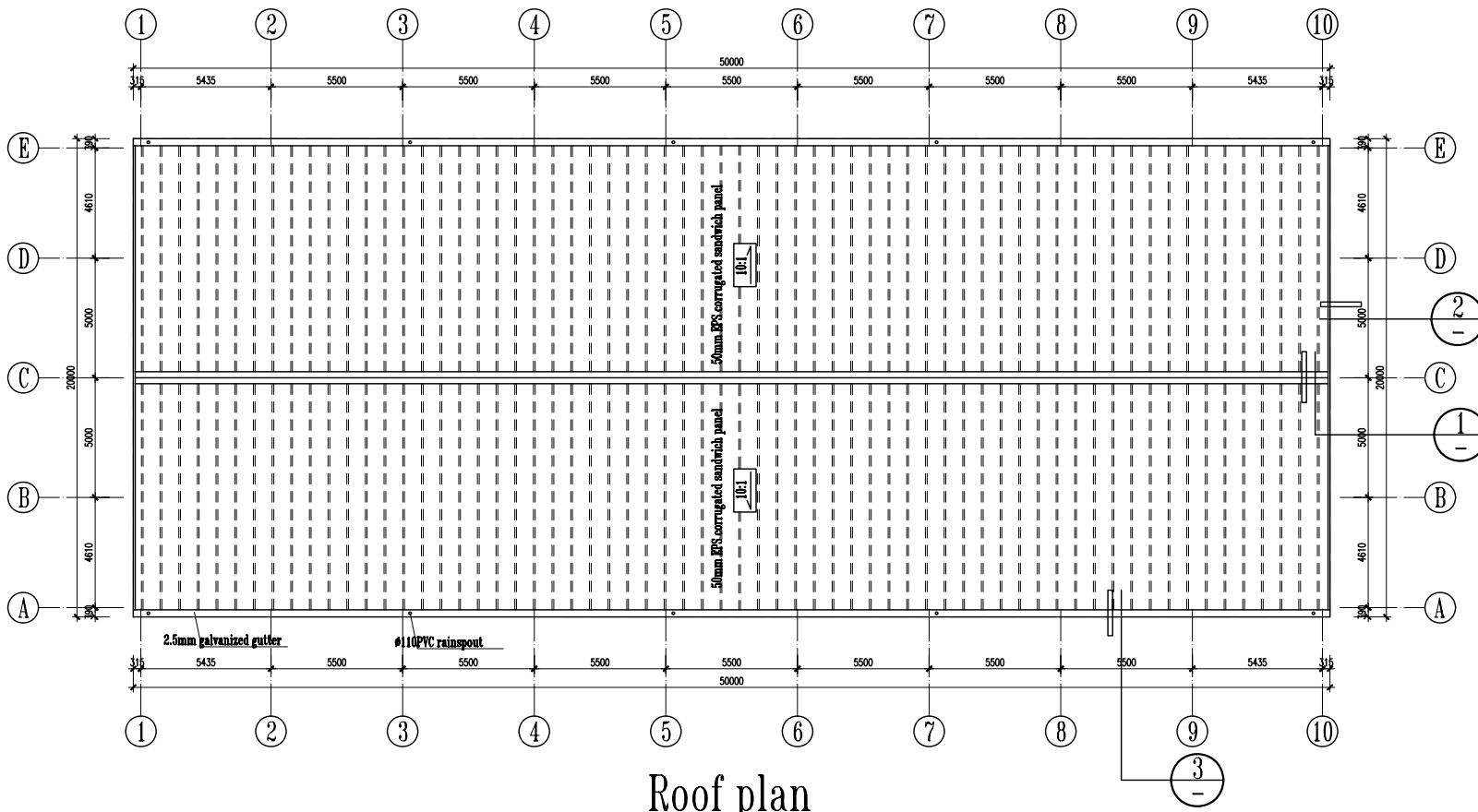


Foundation: After installing the pillar in the right position, make the concrete floor with Micro-expansive fine aggregate concrete.

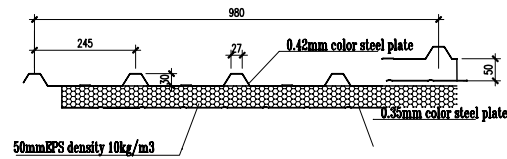
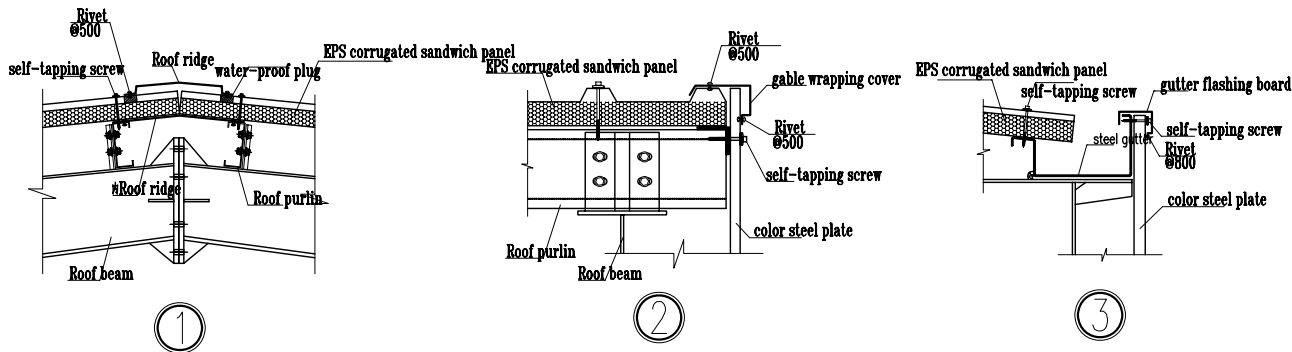
Plinth Detail

list of door and window			
Item	Label	details	size(mm)
Door	M1	sandwich panel sliding door	4000*4500
	M2	steel door	840*1950(exact hole)
Window	C1	aluminum sliding window	2000*1200

Project name 20x50x6m warehouse	Item Bottom plan	Project No. PTL1W100	designer xxx	Proportion 1:100
		Catagory Proposal	Date 2012.09.10	Page 02

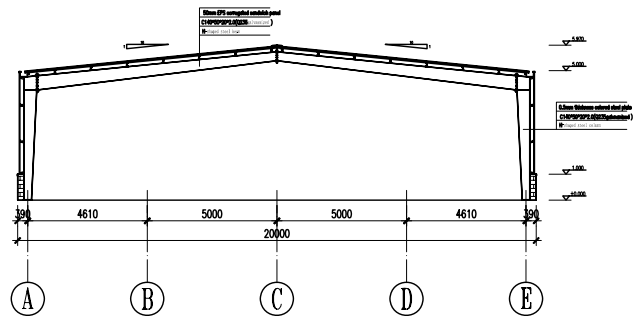


Roof plan

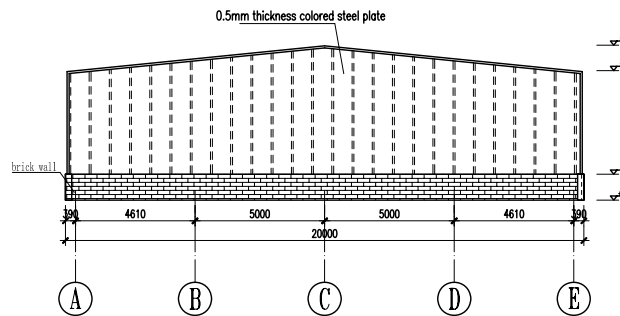


50mm EPS corrugated sandwich panel section

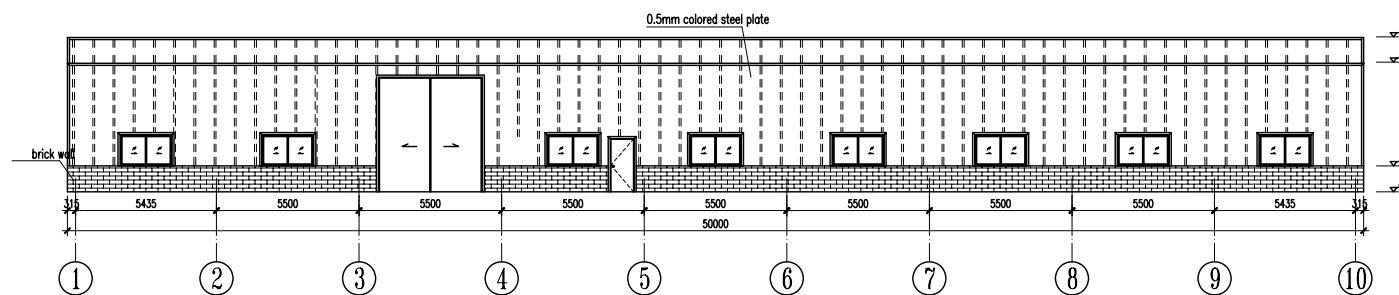
Project name 20x50x6m warehouse	Item Roof plan	Project No. PTL1W100	designer xxx	Proportion 1:100
		Catagory Proposal	Date 2012.09.10	Page 03



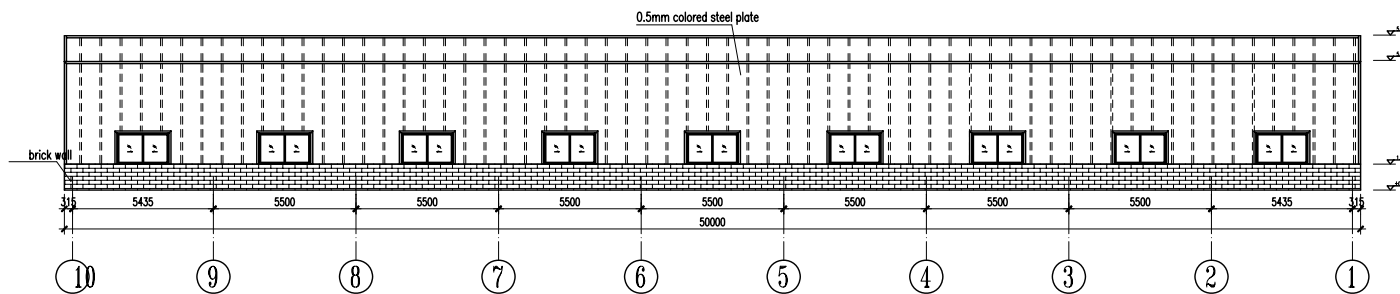
Cross-section  
①



Elevation for 1/10 axis

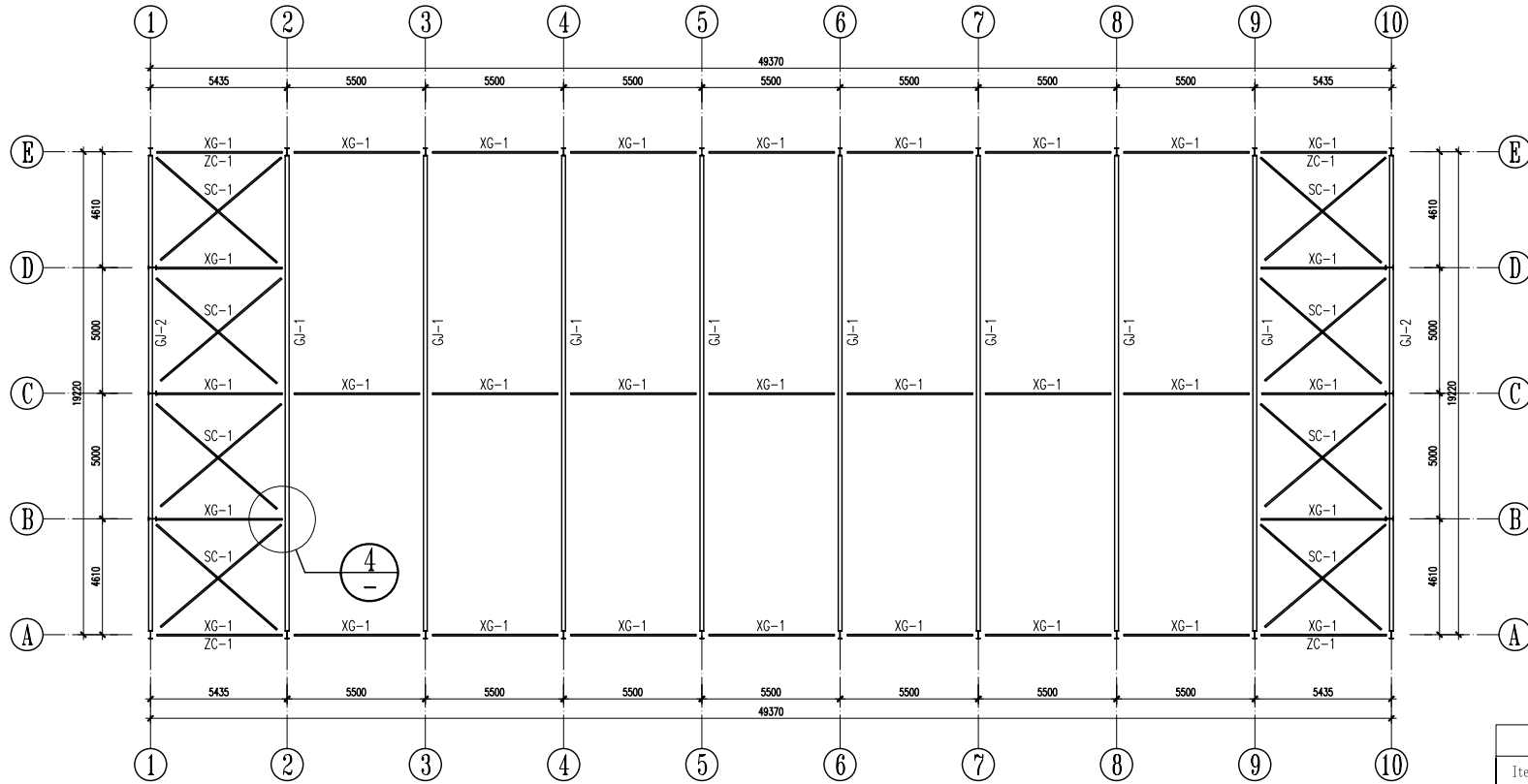


Elevation for A axis



Elevation for E axis

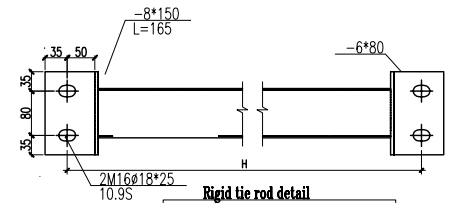
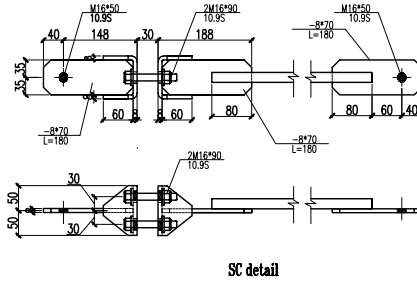
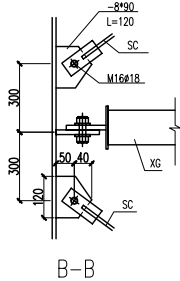
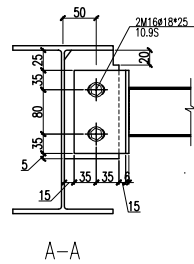
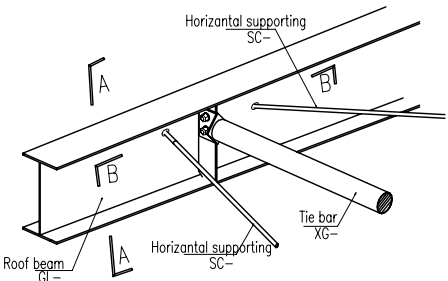
Project name	Item	Project No.	designer	Proportion
20x50x6m warehouse	section /Elevation	PTL1W100	xxx	1:100
		Catagory	Date	Page
		Proposal	2012.09.10	04



## Roof structure plan

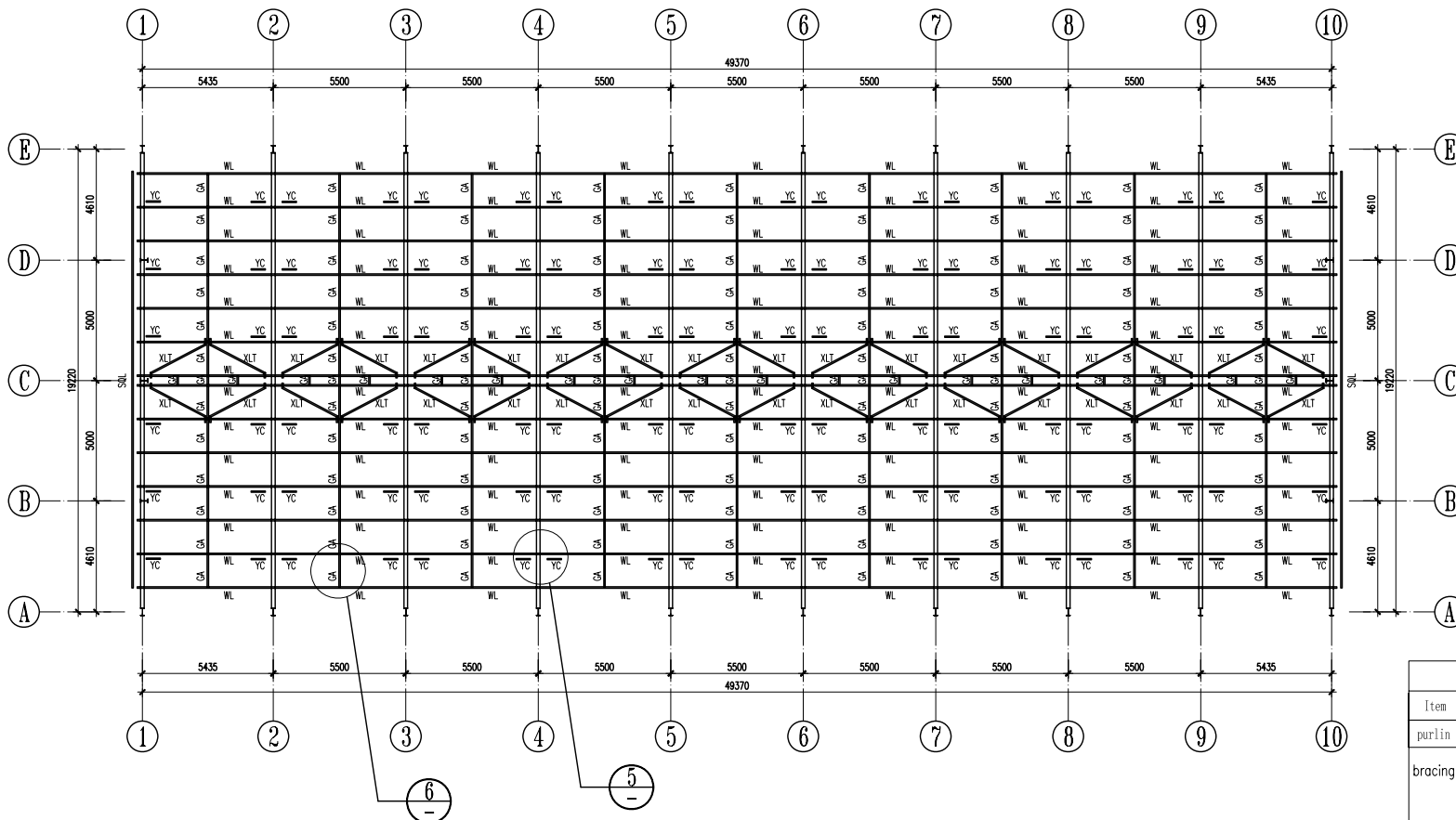
section			
Item	Label	specification	material
bracing	XG-1	∅89*2.5	Q235
	SC-1	∅16	Q235
	ZC-1	∅16	Q235

4



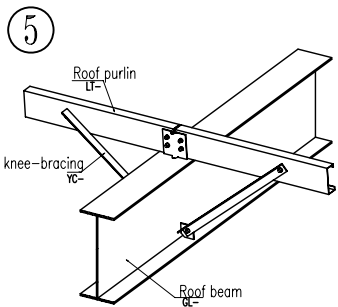
please note: 1.the welding which not indicated are all 5mm double side angle weld and full weld  
2.the material of connect plates is same as main material

Project name	Item	Project No.	designer	Proportion
20x50x6m warehouse	Roof structure plan	PTL1W100	xxx	1:100
		Category	Date	Page
		Proposal	2012.09.10	05

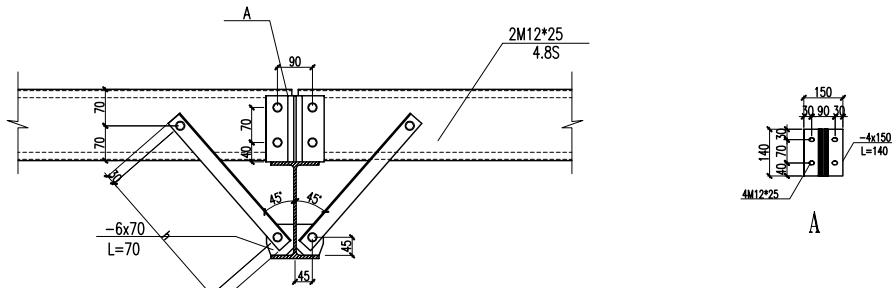


section			
Item	label	specification	material
purlin	WL-1	C140*50*20*2.0	Q235galvanized
bracing	GA	L40*3	Q235
	YC	L40*3	Q235
	SQL	L50*4	Q235

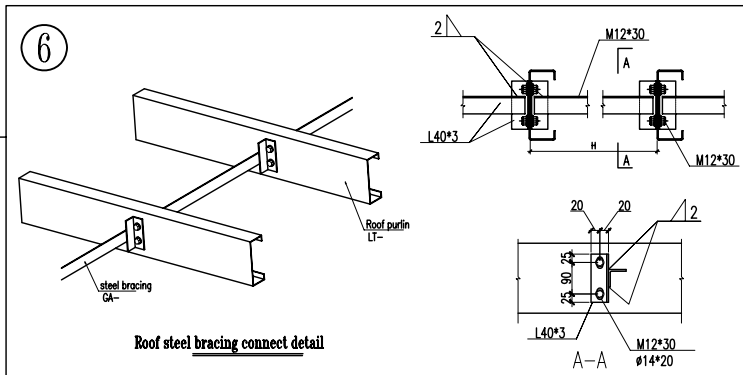
Roof purlin plan



knee-bracing connect detail

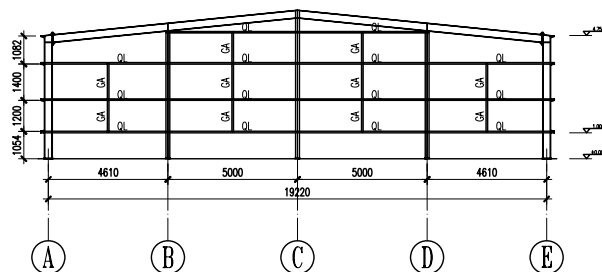


knee-bracing and purlin connect detail

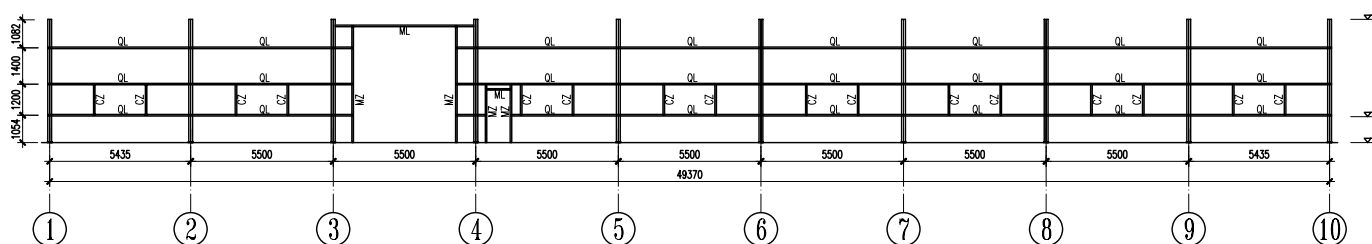


Roof steel bracing connect detail

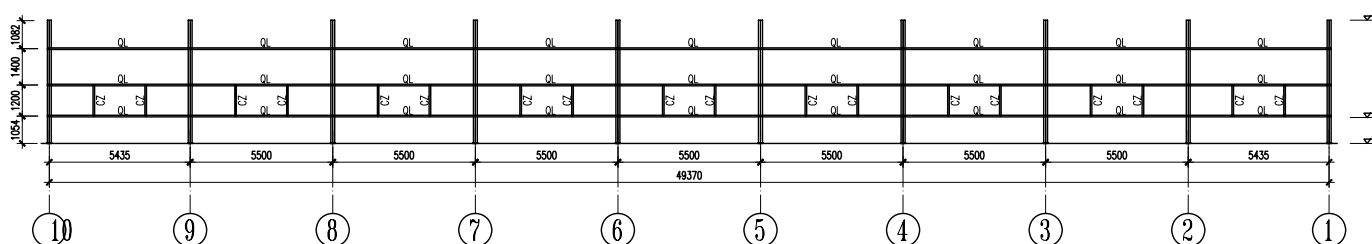
Project name	Item	Project No.	designer	Proportion
20x50x6m warehouse	Roof purlin plan	PTL1W100	xxx	1:100
		Catagory	Date	Page
		Proposal	2012.09.10	06



1/10 axis Wall purlin plan



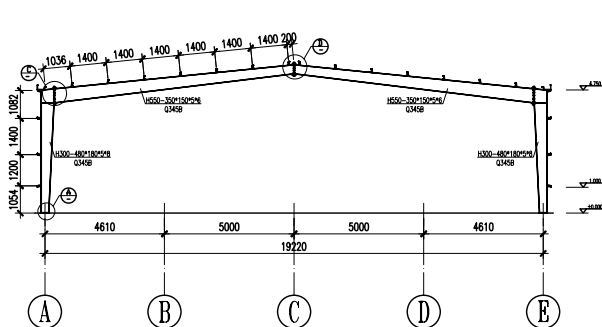
A axis Wall purlin plan



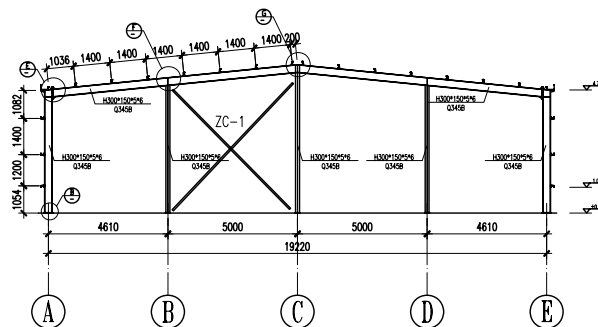
E axis Wall purlin plan

section			
Item	Label	Specification	material
Purlin	QL	C140*50*20*2.0	Q235galvanized
	MZ.ML	2C140*50*20*2.0	Q235galvanized
	CZ	C140*50*20*2.0	Q235galvanized
	GA	L40*3	Q235

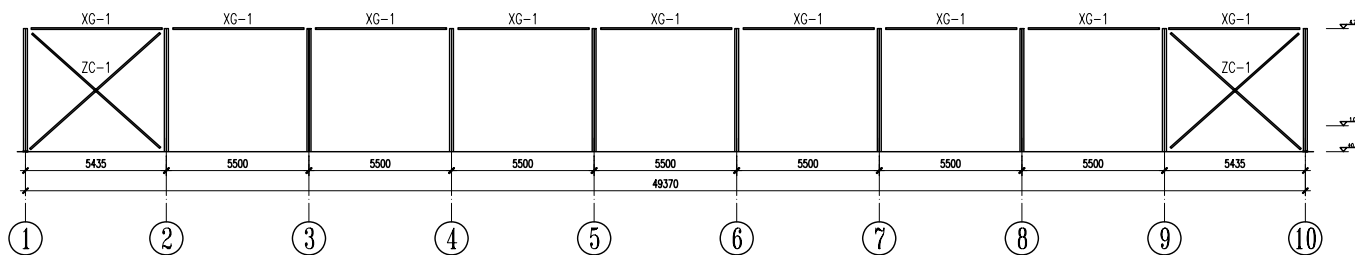
Project name 20x50x6m warehouse	Item wall purlin plan	Project No. PTL1W100	designer xxx	Proportion 1:100
		Catagory Proposal	Date 2012.09.10	Page 07



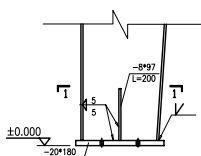
GJ-1



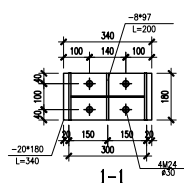
GJ-2



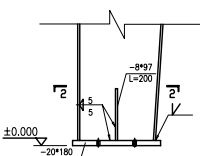
A/E axis wall structure plan



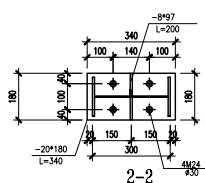
A



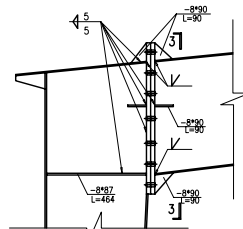
1-1



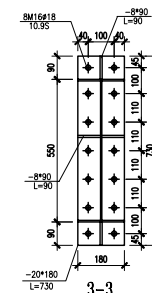
B



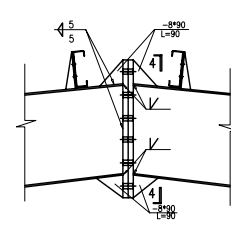
2-2



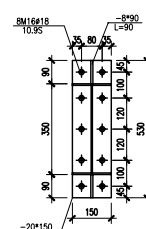
C



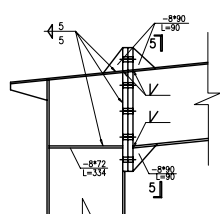
3-3



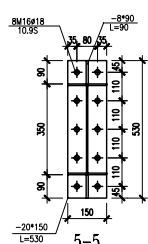
D



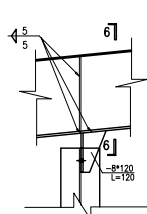
4-4



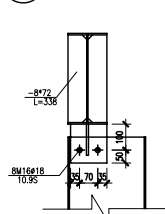
E



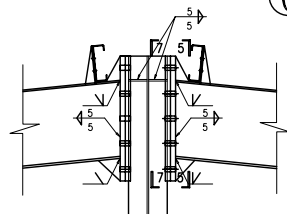
5-5



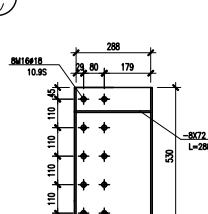
F



6-6



G



7-7

Project name	Item	Project No.	designer	Proportion
20x50x6m warehouse	steel frame	PTL1W100	xxx	1:100
		Catagory	Date	Page
		Proposal	2012.09.10	08