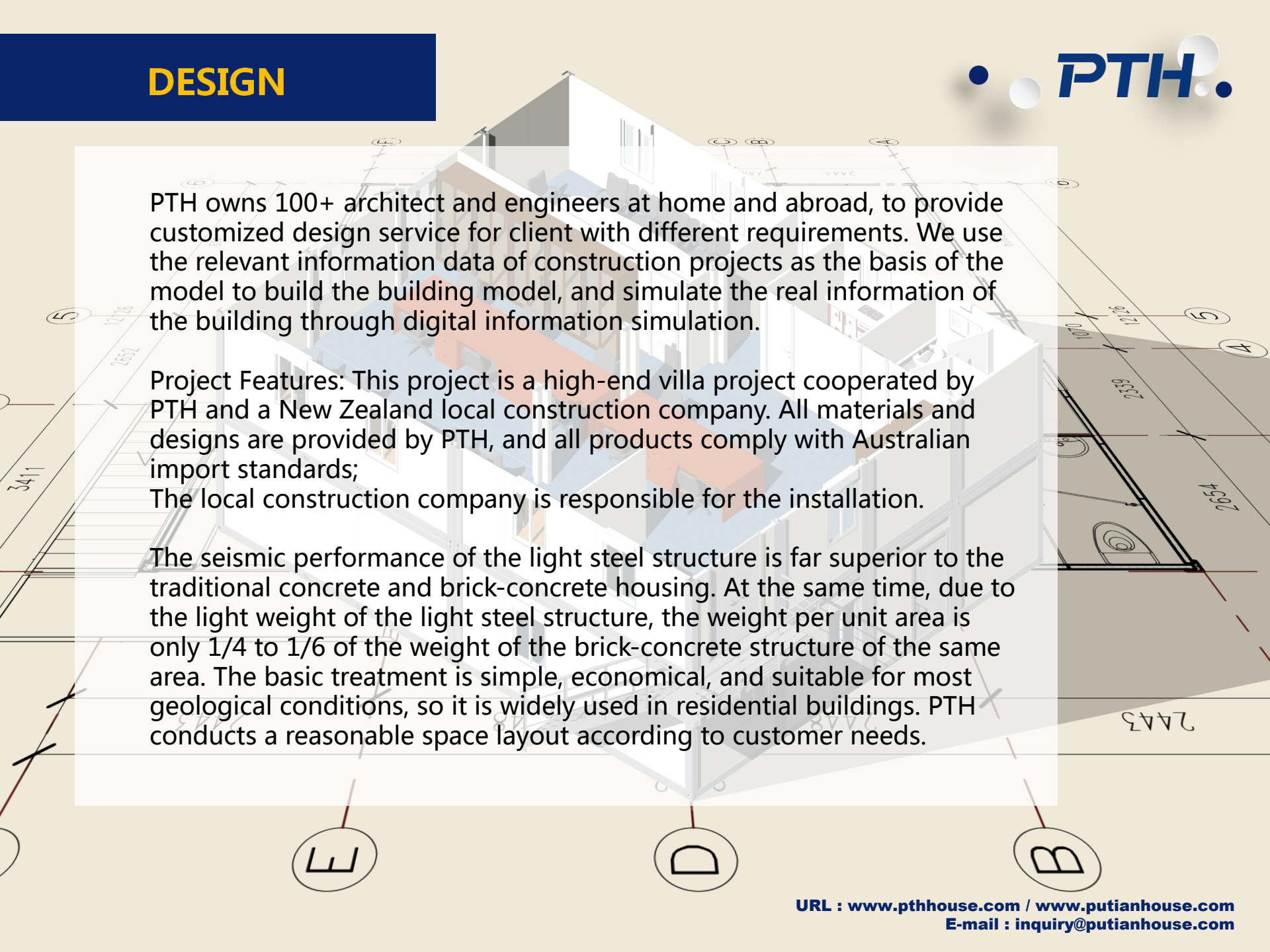


**PTH**

# New Zealand Light Steel Villa

1. Project No. : PTP6V080
2. Date : Year 2014
3. Location : New Zealand
4. Scale : 142m<sup>2</sup>
5. Category: light steel villa
6. Function : Residential villa
7. Characteristics : High-end light steel villa that meets Australian import standards



A 3D architectural rendering of a modern villa, shown in a cutaway view to reveal the interior layout. The house has a white exterior and a light-colored interior. The rendering is overlaid on a background of architectural floor plans and structural diagrams. The floor plans show various rooms, including a living area, dining area, and kitchen. Structural diagrams include grid lines labeled A, B, C, D, E and 1, 2, 3, 4, 5, 6, and dimensions such as 3411, 2652, 12126, 1070, 2532, 42592, and 2443. The rendering is semi-transparent, allowing the underlying architectural drawings to be seen through it.

PTH owns 100+ architect and engineers at home and abroad, to provide customized design service for client with different requirements. We use the relevant information data of construction projects as the basis of the model to build the building model, and simulate the real information of the building through digital information simulation.

**Project Features:** This project is a high-end villa project cooperated by PTH and a New Zealand local construction company. All materials and designs are provided by PTH, and all products comply with Australian import standards;

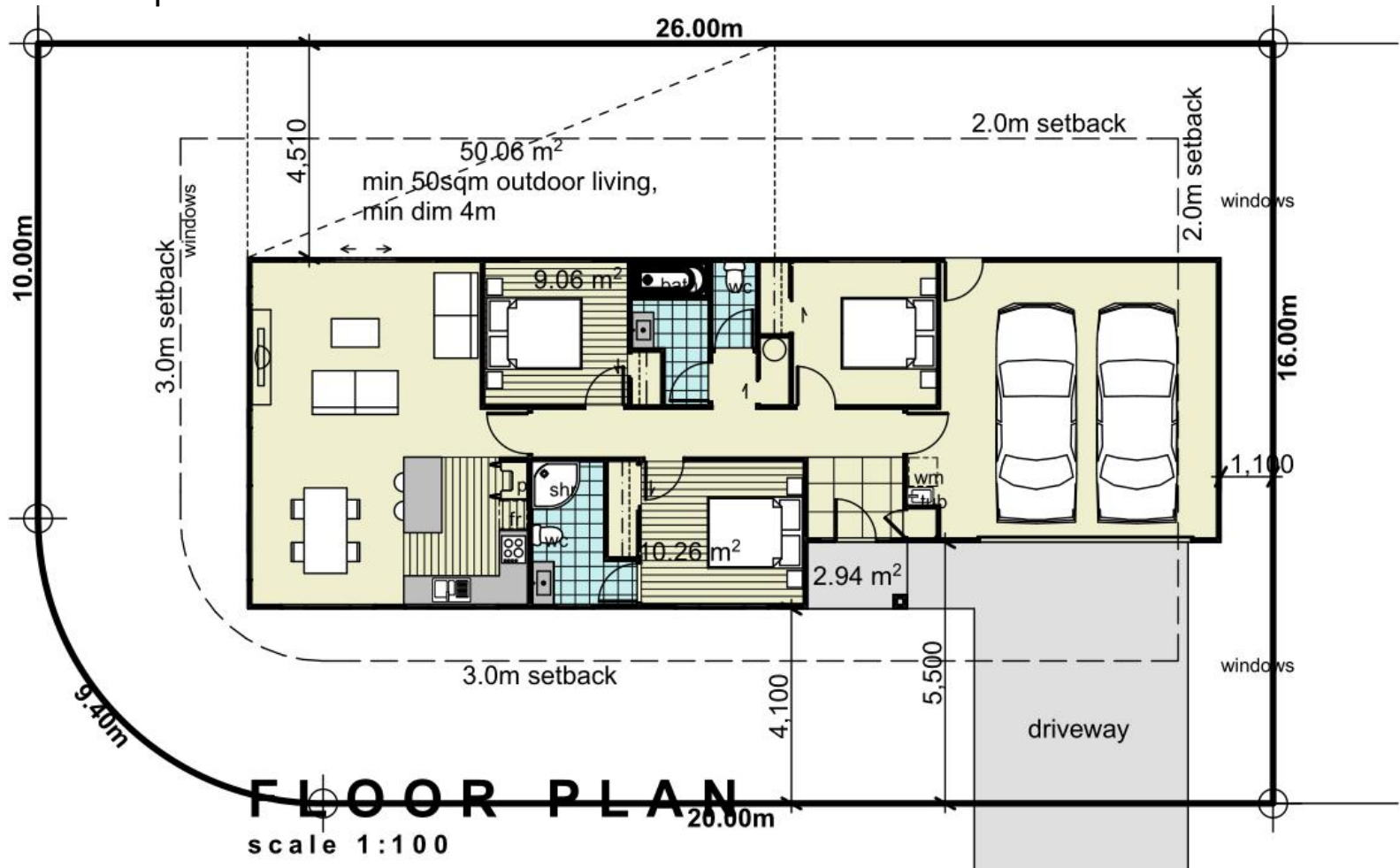
The local construction company is responsible for the installation.

The seismic performance of the light steel structure is far superior to the traditional concrete and brick-concrete housing. At the same time, due to the light weight of the light steel structure, the weight per unit area is only 1/4 to 1/6 of the weight of the brick-concrete structure of the same area. The basic treatment is simple, economical, and suitable for most geological conditions, so it is widely used in residential buildings. PTH conducts a reasonable space layout according to customer needs.

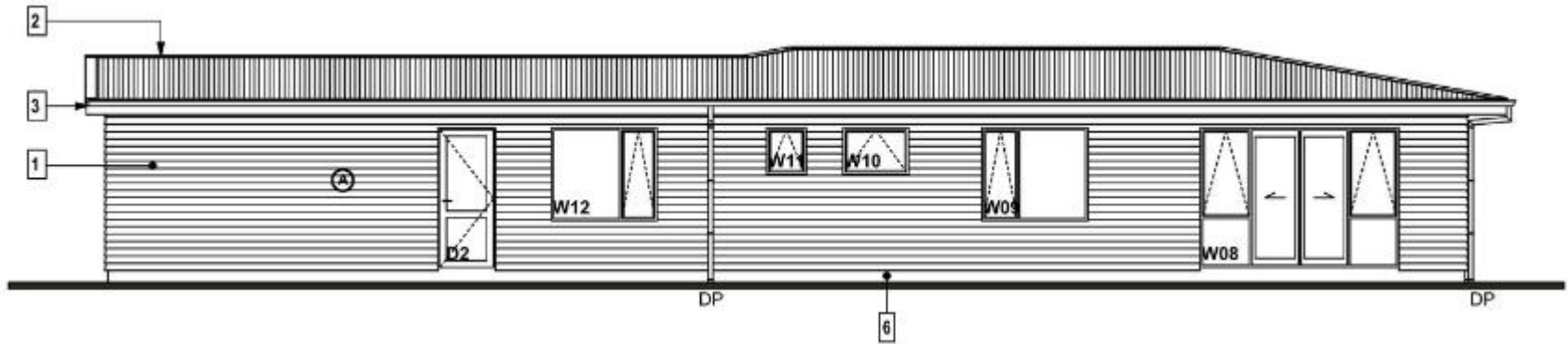
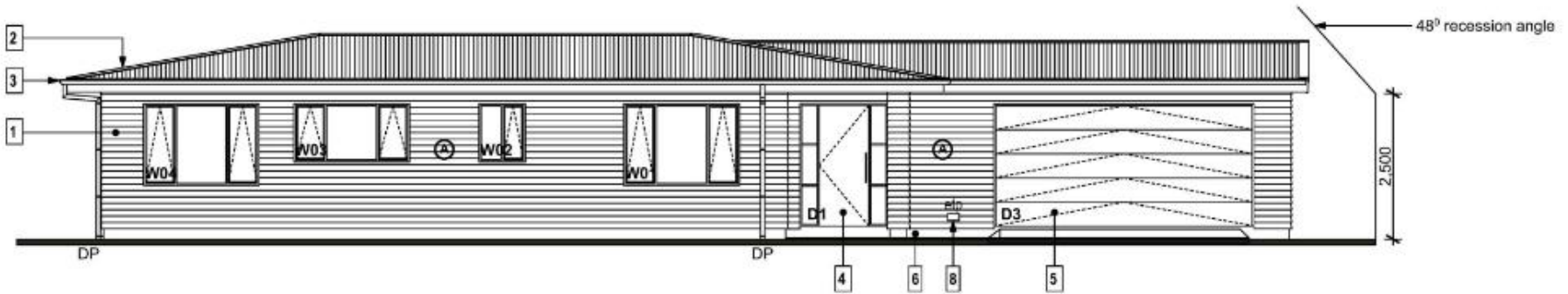
# DESIGN



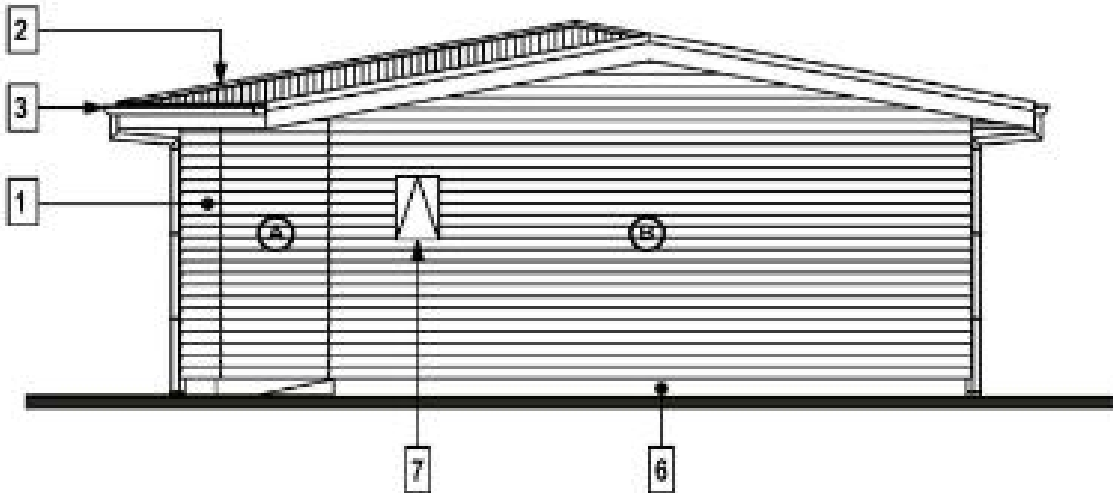
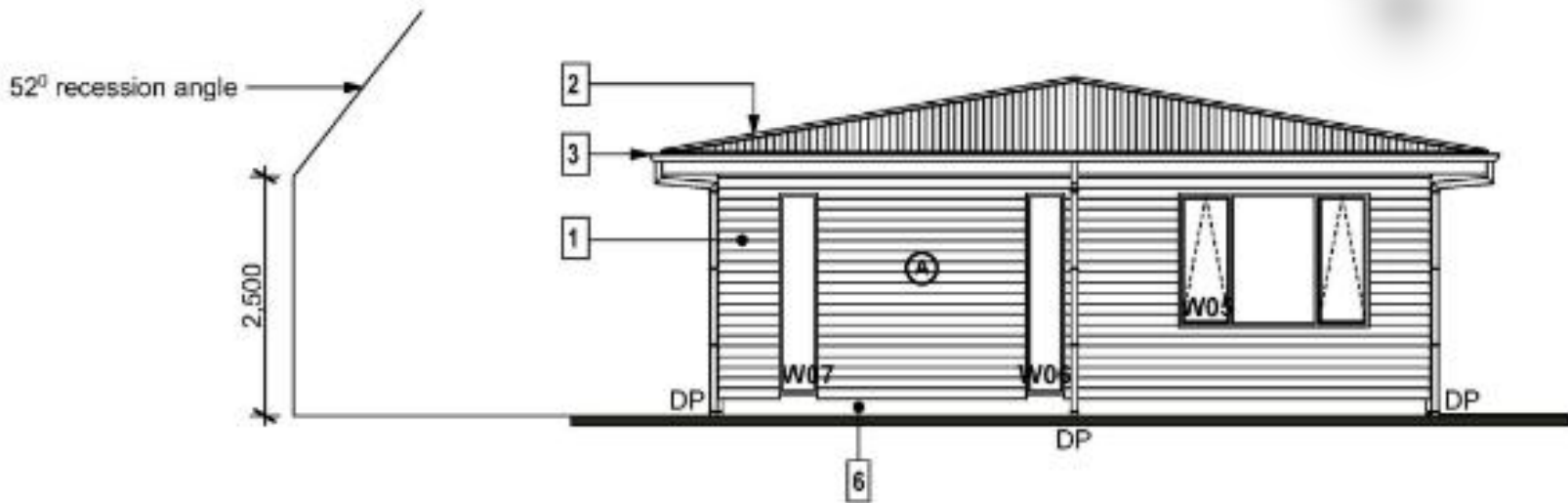
The preliminary design is made in accordance to client's requirement and local building code. After getting the permission by local authority, PTH will do the shop drawing for production.



# DESIGN



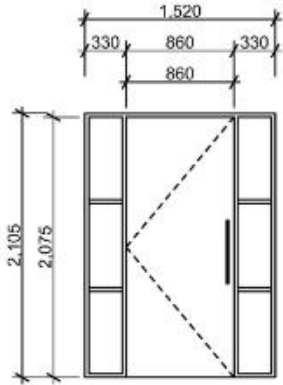
# DESIGN



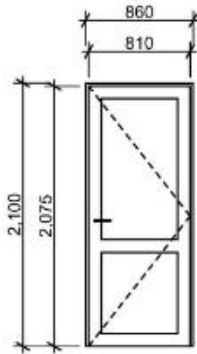
## ELEVATION LEGEND

- 1 Eternit 12mm Eterpan Fibre cement weatherboards over 12mm x 70 wide XPS strips thermal break over Building paper over 90 x 40 x 0.75 steel framed walls
- 2 0.6mm colorsteel corrugate roofing
- 3 colorsteel gutter with internal clips over colorsteel fascia
- 4 Selected powder coated aluminium insulated front door and aluminium frame.
- 5 Selected colorsteel sectional roller door
- 6 fairface finish to exposed foundation
- 7 meterbox, allow to paint to match wall.
- 8 etp. Fibre Broadband external test point box. To be installed at time of connection by ENABLE.

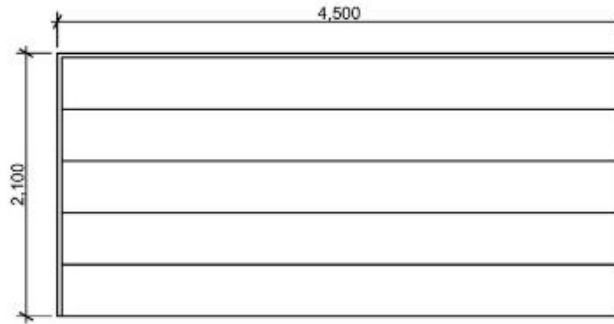
# DESIGN



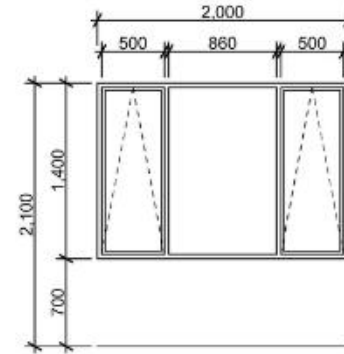
**D1**  
860 door aluminium entry door  
sidelights clear glazing



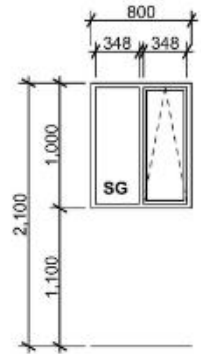
**D2**  
860 door  
clear glazing



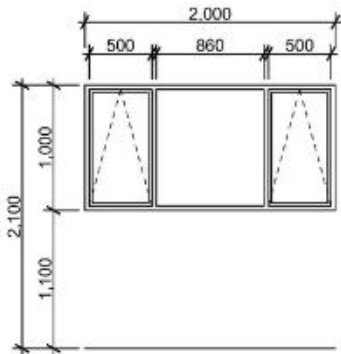
**D3**  
sectional garage door



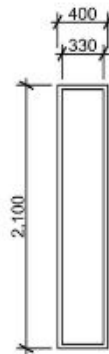
**W01, W04, W05**  
clear glazing



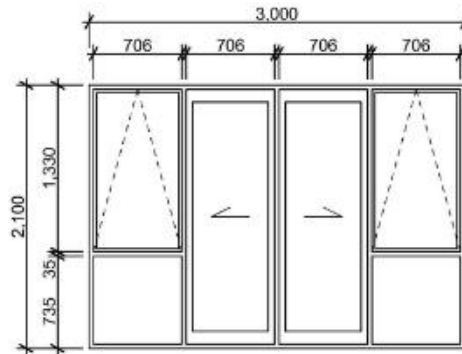
**W02**  
obscure glazing



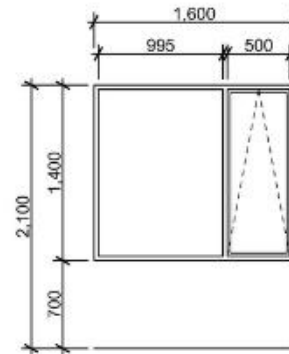
**W03**  
clear glazing



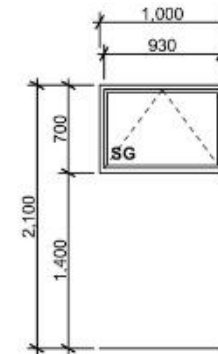
**W06, W07**  
clear glazing



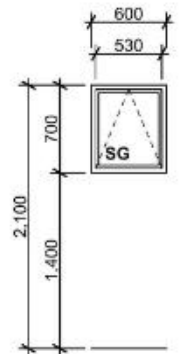
**W08**  
clear glazing



as shown; (W12); handed  
(W09)  
clear glazing



**W10**  
obscure glazing



**W11**  
obscure glazing

# PRODUCTION & DELIVERY



## PROCUREMENT :

PTH has a mature procurement supply chain, including product raw materials, kitchen and bathroom accessories, home equipment and other supporting facilities. Each year, PTH conducts quality assessments of suppliers, resolutely rejects unqualified suppliers, and guarantees the quality of products from the source.

## PRODUCTION :

PTH owns hundreds of fully automatic mechanized production lines, which ensures high production efficiency and timely delivery. In the manufacturing process, PTH can provide production progress reports to customers through pictures and video. PTH has a professional quality inspection team which takes strict quality control in each process, and make sure defect product never be delivered to client.

## TRANSPORTATION :

PTH, who has more than 20 years of international logistics experience. can provide customers with the best transportation routes, customs declaration, commodity inspection and other services, and truly realizes "door to door."



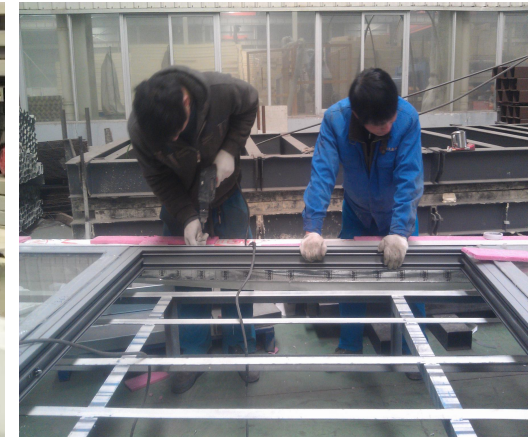


Quality is the life of a enterprise and the foundation of sustainable development. PTH strictly follows the ISO9000 quality system and make quality control in each process from material procurement to finish product delivery.

For the outsourcing raw material and accessories, it is reported to the ICQC team for inspection. ICQC will inspect according to “Raw Material Inspection Regulations” , make sure the material technical specs and quality meets GB standard, then upload the inspection record, QC document and test report to ERP system.



# PRODUCTION PICTURES



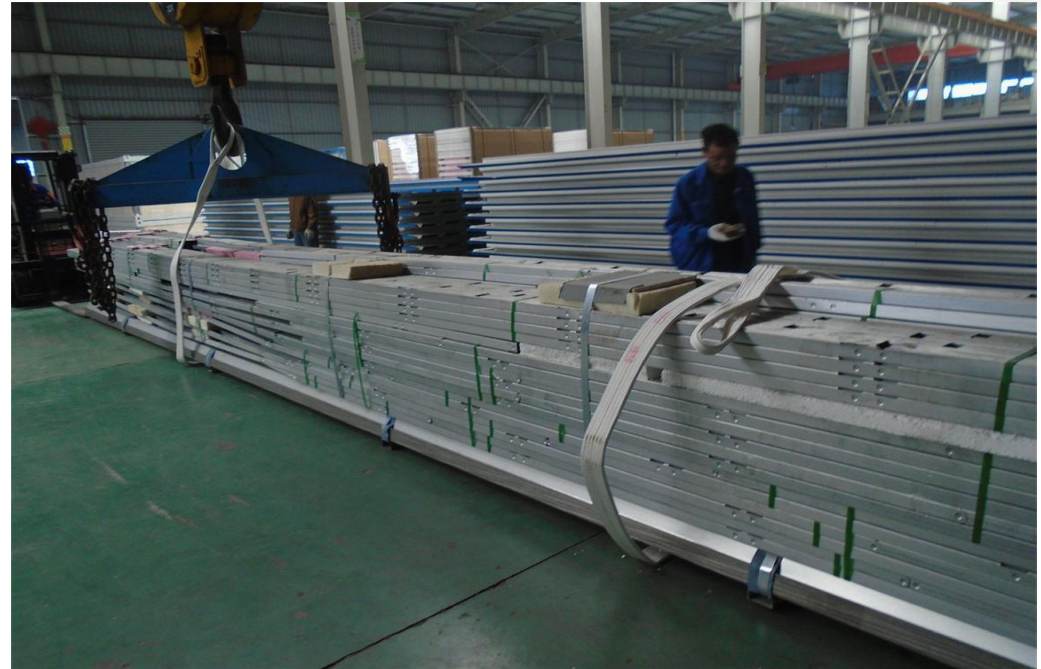
PTH makes random inspection system for the manufacturing process. IPQC makes daily random inspection according to the quality requirement of each order, so as to avoid defect products.

The production team also set up process quality report system. Only those qualified products can be transferred to the next process.

**URL : [www.pthhouse.com](http://www.pthhouse.com) / [www.putianhouse.com](http://www.putianhouse.com)**  
**E-mail : [inquiry@putianhouse.com](mailto:inquiry@putianhouse.com)**

## PACKAGE & LOADING

PTH makes the most reasonable package plan according to the structure characteristics and quality requirement. The modular package design of the spare part effectively reduce the package volume. The spare parts of each module is packed in a separate package, these small package modular combination ensures a easy transportation and installation, which in return makes the loading and unloading much easier, and greatly reduces labor cost.



# INSTALLATION



PTH will provide complete and detailed installation drawings for the product. PTH has professional photography and post-production personnel who can provide installation videos for the product and intuitively demonstrate the installation steps and installation details of the product.

PTH owns on-site installation guidance experience for dozens of projects such as Mozambican light steel villa resorts, Chilean container camps, etc. It can provide EPC construction services and technical guidance according to the needs of customers to ensure the smooth and safe construction of the houses required by customers and realize real "Check-in".



# INSTALLATION



# INSTALLATION



# INSTALLATION



URL : [www.pthouse.com](http://www.pthouse.com) / [www.putianhouse.com](http://www.putianhouse.com)  
E-mail : [inquiry@putianhouse.com](mailto:inquiry@putianhouse.com)

# INSTALLATION



## CLIENT FEEDBACK



We use BIM system to manage and operate the whole project. For the maintenance, PTH provide online technical support or maintenance service on the site per client requirement. The customer subsequently cooperated with PTH on a number of light steel villa projects. We are our long-term partners and trust in PTH.

