

**PTH**

## New Zealand Light Gauge Steel Villa

1. Project No. : PT160530

3. Location : Saint Martin

5. Type : Light Gauge Steel

7. Feature : Small apartment LGS villa, mainly used for tourism.

2. Date : 2016

4. Scale : 75m<sup>2</sup>

6. Function : Holiday home



# PROJECT DESIGN



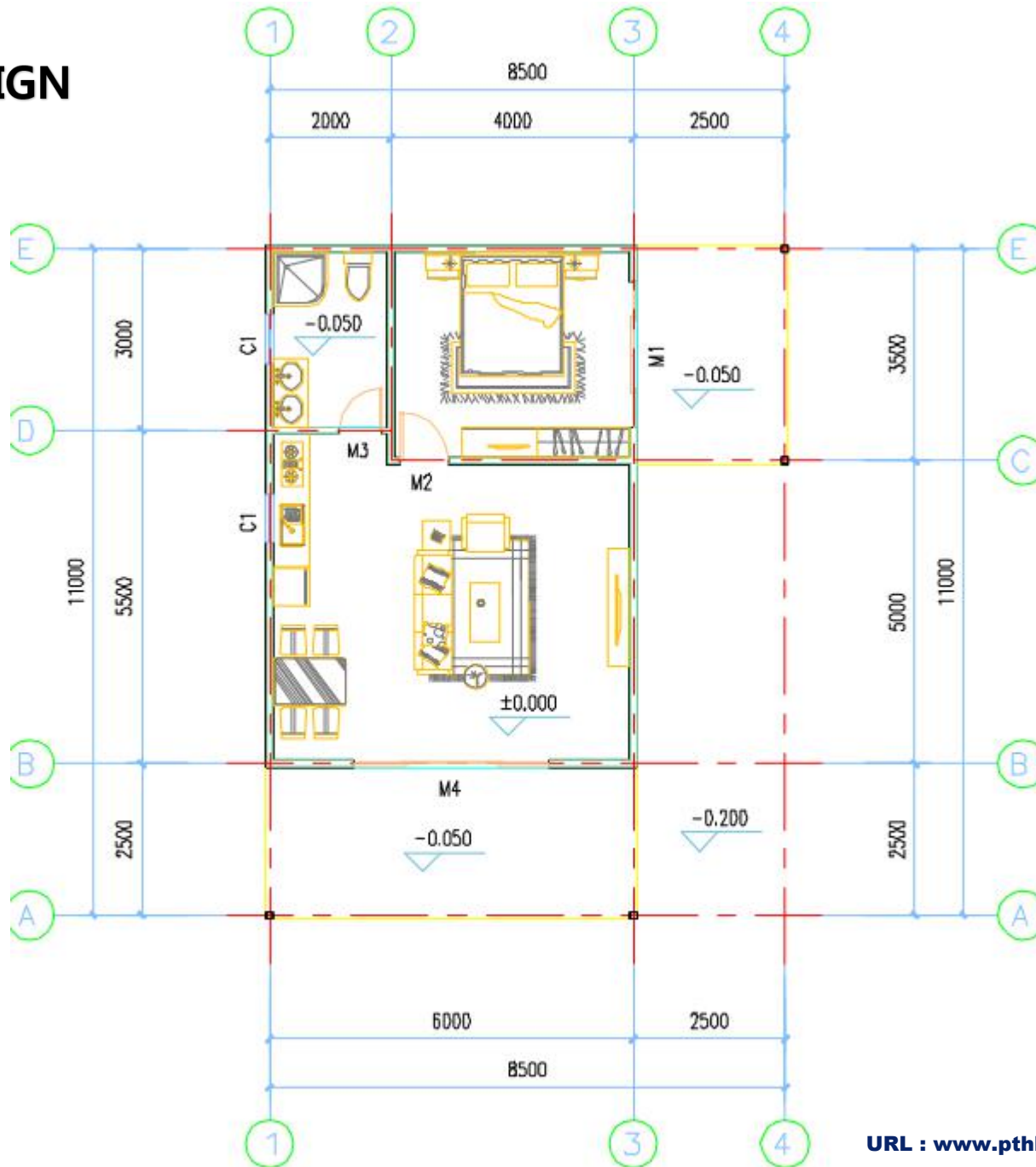
PTH owns 100+ architect and engineers at home and abroad, to provide customized design service for client with different requirements. We use the relevant information data of construction projects as the basis of the model to build the building model, and simulate the real information of the building through digital information simulation.

At present, we have finished the Revit research and development of company' s products, laying a solid foundation to finish design effectively and accurately and also presenting details and three dimensional effects of our company' s products to customers.

Project features: The client's head office is located in Canada and has an office in Shanghai. The main business is hotel furniture and some integrated housing business. This order is a set of villa sample, mainly used for tourism and vacation. It is expected that there will be bulk demand in the later period. Our company only provides materials for the house, and the interior furniture is provided by the Shanghai office.

The roof adopts 0.6mm colored steel glazed tile (orange RAL2009), one-way breathing paper, 100mm glass insulation wool; the outer wall adopts 27mmPU metal carving board (white gray RAL9016), one-way breathing paper, 12mmOSB board, 100mm glass insulation wool, 12mm Gypsum board; internal walls use 12mm gypsum board, 100mm glass insulation cotton, 12mm gypsum board, one-way breathing paper (only bathroom wall), 300\*450mm wall (only bathroom wall).

# DESIGN

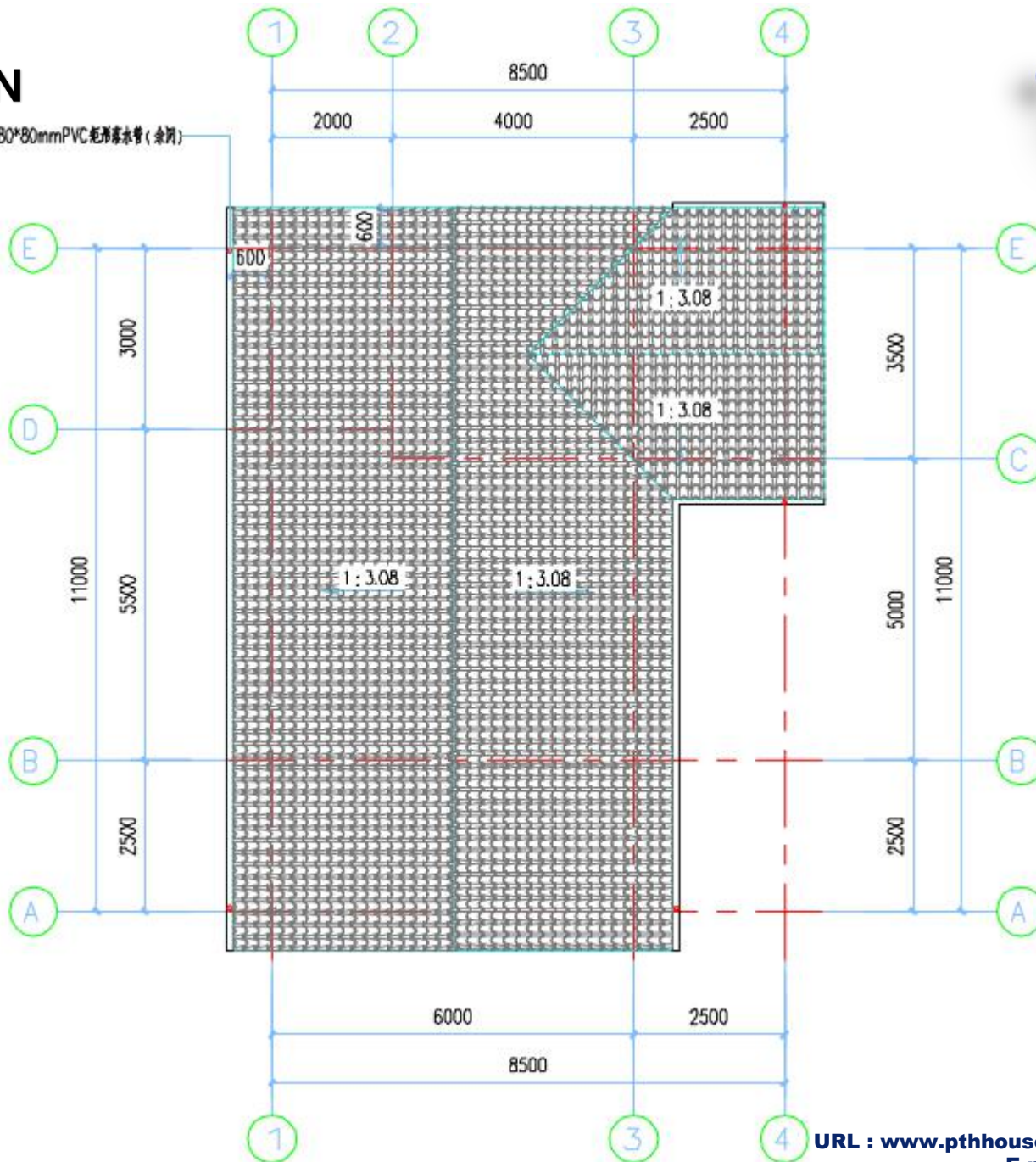


The preliminary design is made in accordance to client's requirement and local building code. After getting the permission by local authority, PTH will do the shop drawing for production.

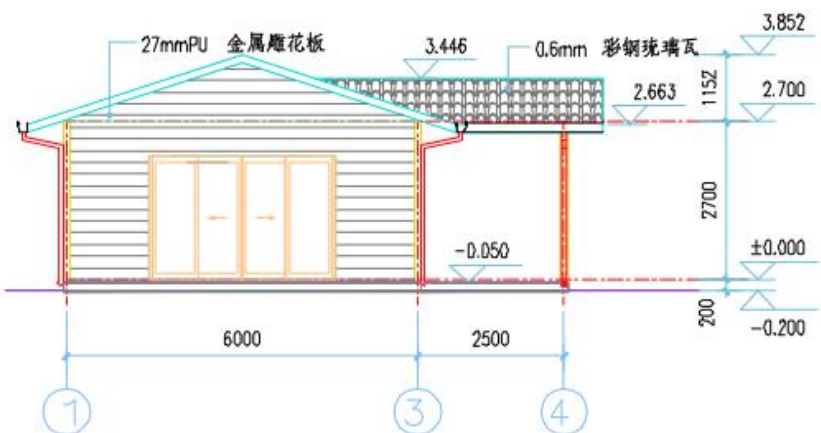
# DESIGN



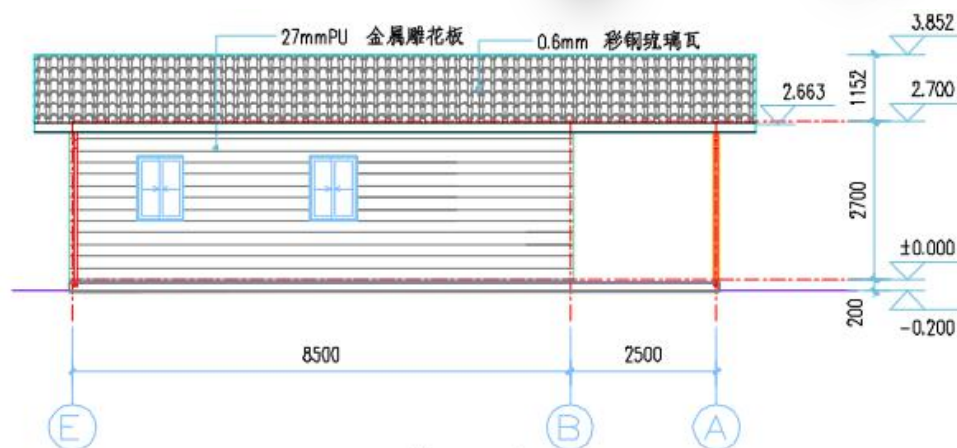
80\*80mmPVC起形落水管(余洞)



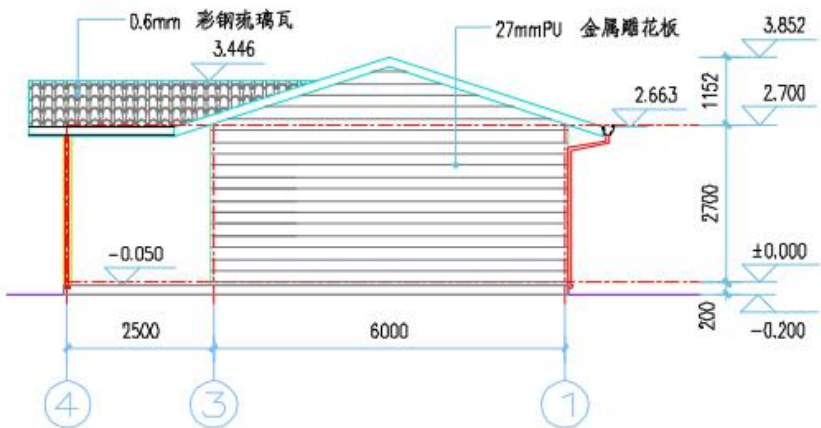
# DESIGN



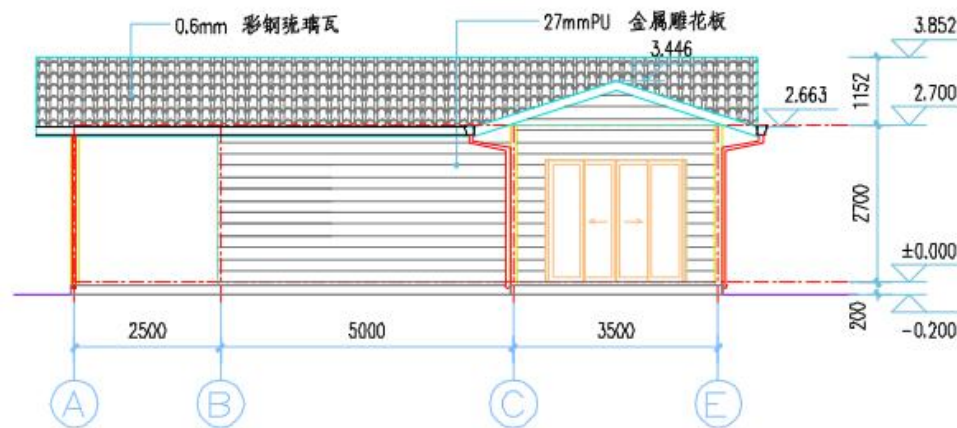
①~④轴立面图 1:100



⑤~①轴立面图 1:100

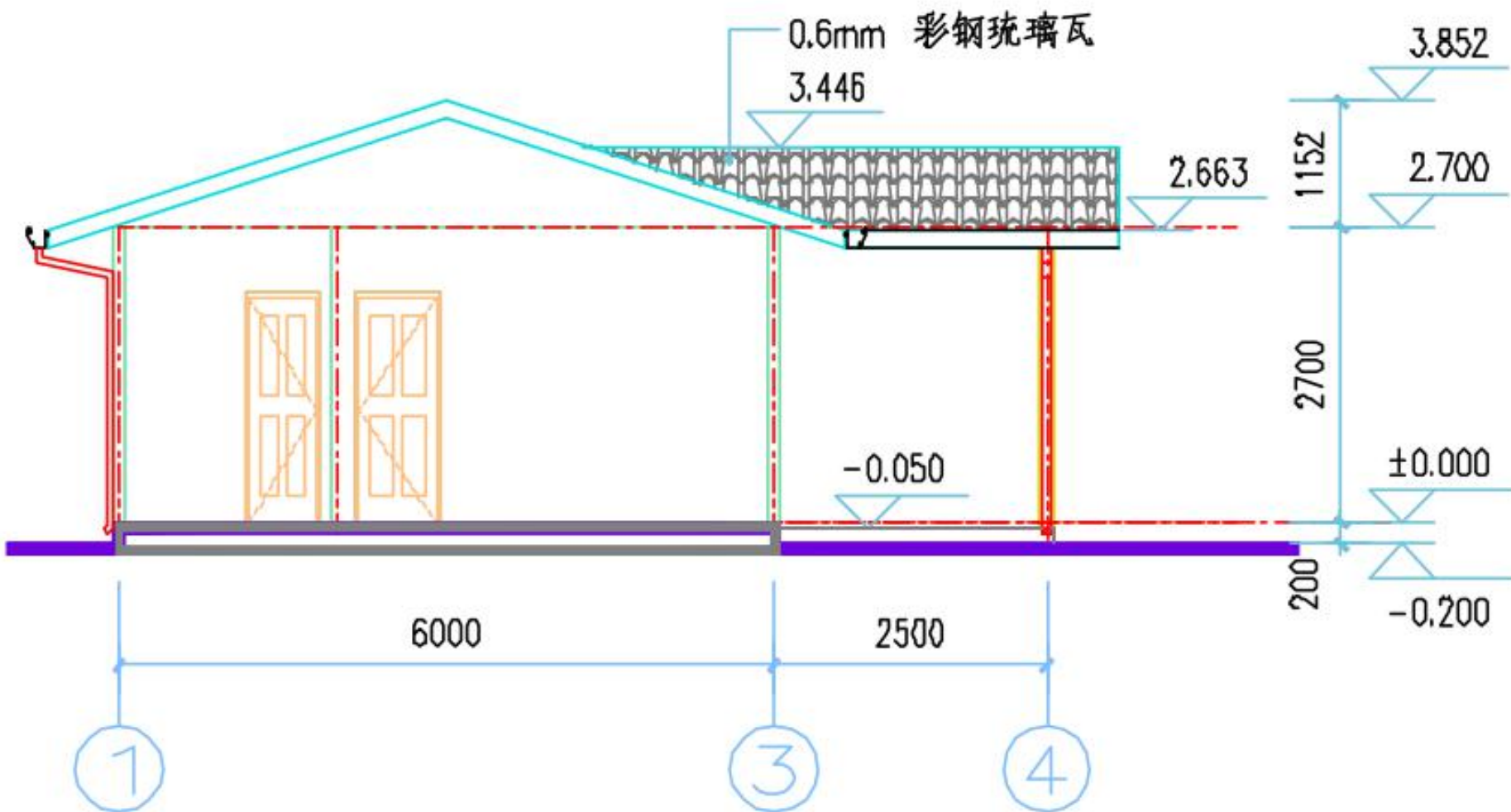


④~①轴立面图 1:100



①~⑤轴立面图 1:100

# DESIGN



# PRODUCTION & DELIVERY



## PROCUREMENT :

PTH has a mature procurement supply chain, including product raw materials, kitchen and bathroom accessories, home equipment and other supporting facilities. Each year, PTH conducts quality assessments of suppliers, resolutely rejects unqualified suppliers, and guarantees the quality of products from the source.

## PRODUCTION :

PTH owns hundreds of fully automatic mechanized production lines, which ensures high production efficiency and timely delivery. In the manufacturing process, PTH can provide production progress reports to customers through pictures and video. PTH has a professional quality inspection team which takes strict quality control in each process, and make sure defect product never be delivered to client.

## TRANSPORTATION :

PTH, who has more than 20 years of international logistics experience. can provide customers with the best transportation routes, customs declaration, commodity inspection and other services, and truly realizes "door to door."



# PRODUCTION VIEW



Quality is the life of a enterprise and the foundation of sustainable development. PTH strictly follows the ISO9000 quality system and make quality control in each process from material procurement to finish product delivery.

For the outsourcing raw material and accessories, it is reported to the ICQC team for inspection. ICQC will inspect according to "Raw Material Inspection Regulations" , make sure the material technical specs and quality meets GB standard, then upload the inspection record, QC document and test report to ERP system.



# PRODUCTION VIEW

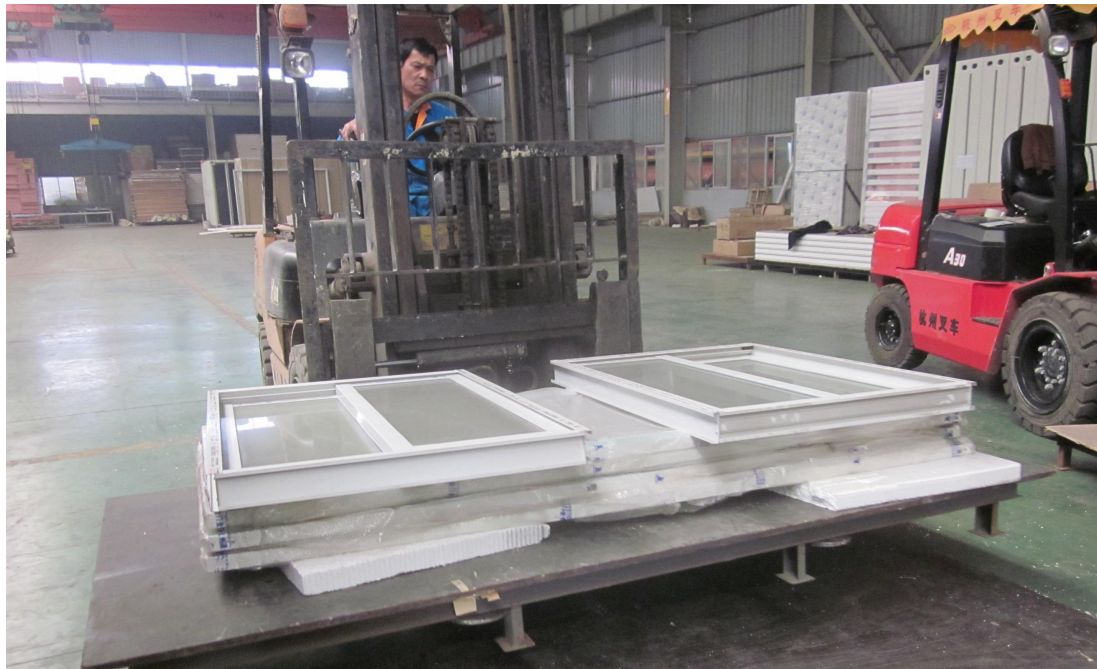


PTH makes random inspection system for the manufacturing process. IPQC makes daily random inspection according to the quality requirement of each order, so as to avoid defect products.

The production team also set up process quality report system. Only those qualified products can be transferred to the next process.

# PACKING & LOADING

PTH makes the most reasonable package plan according to the structure characteristics and quality requirement. The modular package design of the spare part effectively reduce the package volume. The spare parts of each module is packed in a separate package, these small package modular combination ensures a easy transportation and installation, which in return makes the loading and unloading much easier, and greatly reduces labor cost.



# PROJECT INSTALLATION



PTH will provide complete and detailed installation drawings for the product. PTH has professional photography and post-production personnel who can provide installation videos for the product and intuitively demonstrate the installation steps and installation details of the product.

PTH owns on-site installation guidance experience for dozens of projects such as Mozambican light steel villa resorts, Chilean container camps, etc. It can provide EPC construction services and technical guidance according to the needs of customers to ensure the smooth and safe construction of the houses required by customers and realize real "Check-in".

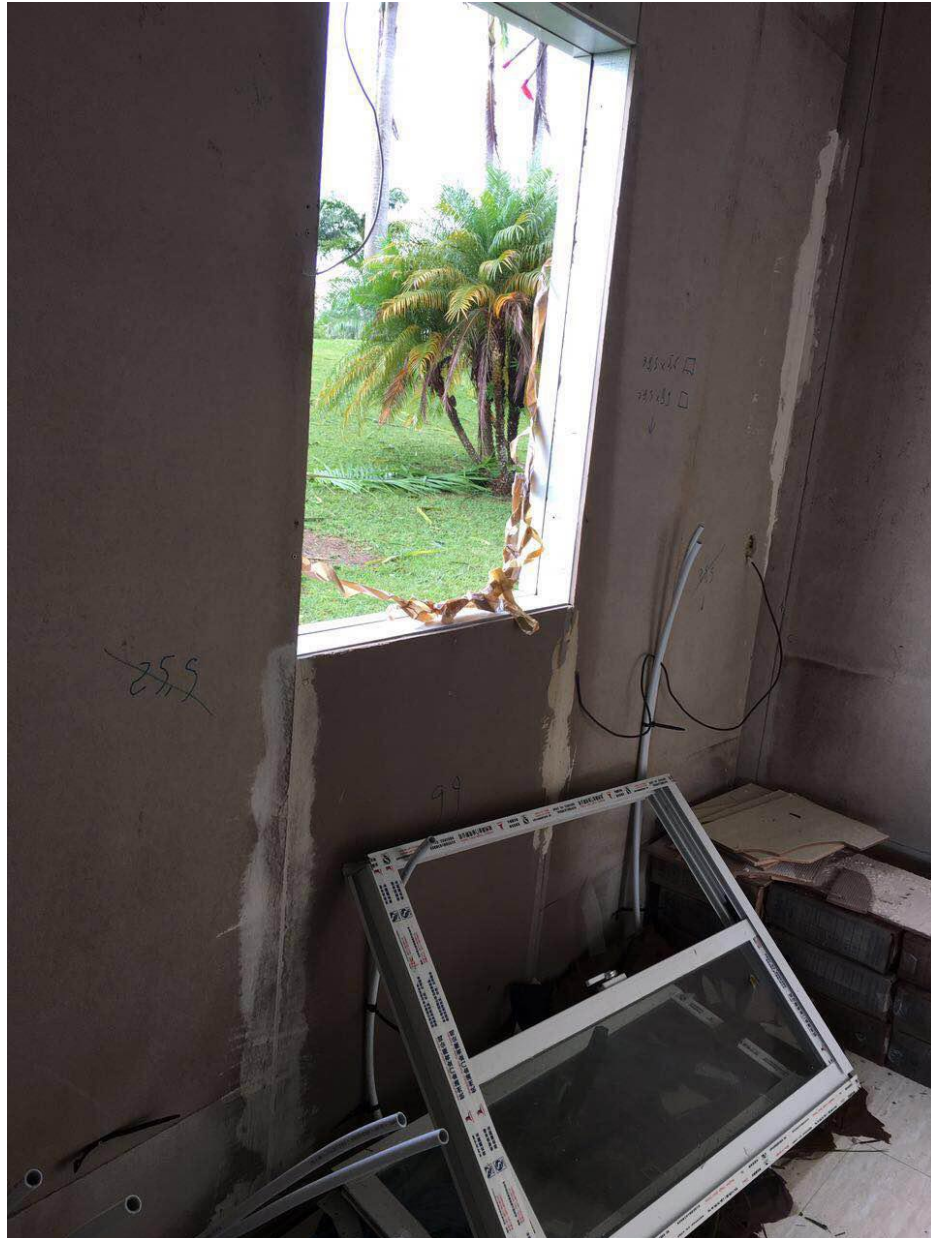
**URL : [www.pthhouse.com](http://www.pthhouse.com) / [www.putianhouse.com](http://www.putianhouse.com)**  
**E-mail : [inquiry@putianhouse.com](mailto:inquiry@putianhouse.com)**

# LOCAL INSTALLATION SITE



URL : [www.pthouse.com](http://www.pthouse.com) / [www.putianhouse.com](http://www.putianhouse.com)  
E-mail : [inquiry@putianhouse.com](mailto:inquiry@putianhouse.com)

# LOCAL INSTALLATION SITE



# LOCAL INSTALLATION SITE



URL : [www.pthhouse.com](http://www.pthhouse.com) / [www.putianhouse.com](http://www.putianhouse.com)  
E-mail : [inquiry@putianhouse.com](mailto:inquiry@putianhouse.com)

**LOCAL INSTALLATION SITE**



**URL : [www.pthouse.com](http://www.pthouse.com) / [www.putianhouse.com](http://www.putianhouse.com)  
E-mail : [inquiry@putianhouse.com](mailto:inquiry@putianhouse.com)**

# CLIENT FEEDBACK

PTH!

We use BIM system to manage and operate the whole project. For the maintenance, PTH provide online technical support or maintenance service on the site per client requirement.

The customer subsequently cooperated with PTH in a number of light gauge steel villa projects. He has developed a long-term and trustful partnership with PTH.

URL : [www.pthhouse.com](http://www.pthhouse.com) / [www.putianhouse.com](http://www.putianhouse.com)  
E-mail : [inquiry@putianhouse.com](mailto:inquiry@putianhouse.com)



# PROJECT PHOTOS



PROJECT PHOTOS



URL : [www.pthouse.com](http://www.pthouse.com) / [www.putianhouse.com](http://www.putianhouse.com)  
E-mail : [inquiry@putianhouse.com](mailto:inquiry@putianhouse.com)

PROJECT PHOTOS

PTH.



# PROJECT PHOTOS



# PROJECT PHOTOS



# PROJECT PHOTOS

