

PTH

Military camp in Mozambique

1. Project order number:
2. Date: 2012
3. Project location: Mozambique
4. Project scale: 27 single-story buildings + 4 container houses
5. Type: economic activity house + container house
6. Function : military camp
7. Features of the project: using mobile homes as residential camps, large space and low economic cost



PROJECT DESIGN



PTH owns 100+ architect and engineers at home and abroad, to provide customized design service for client with different requirements. We use the relevant information data of construction projects as the basis of the model to build the building model, and simulate the real information of the building through digital information simulation.

At present, we have finished the Revit research and development of company's products, laying a solid foundation to finish design effectively and accurately and also presenting details and three dimensional effects of our company's products to customers.

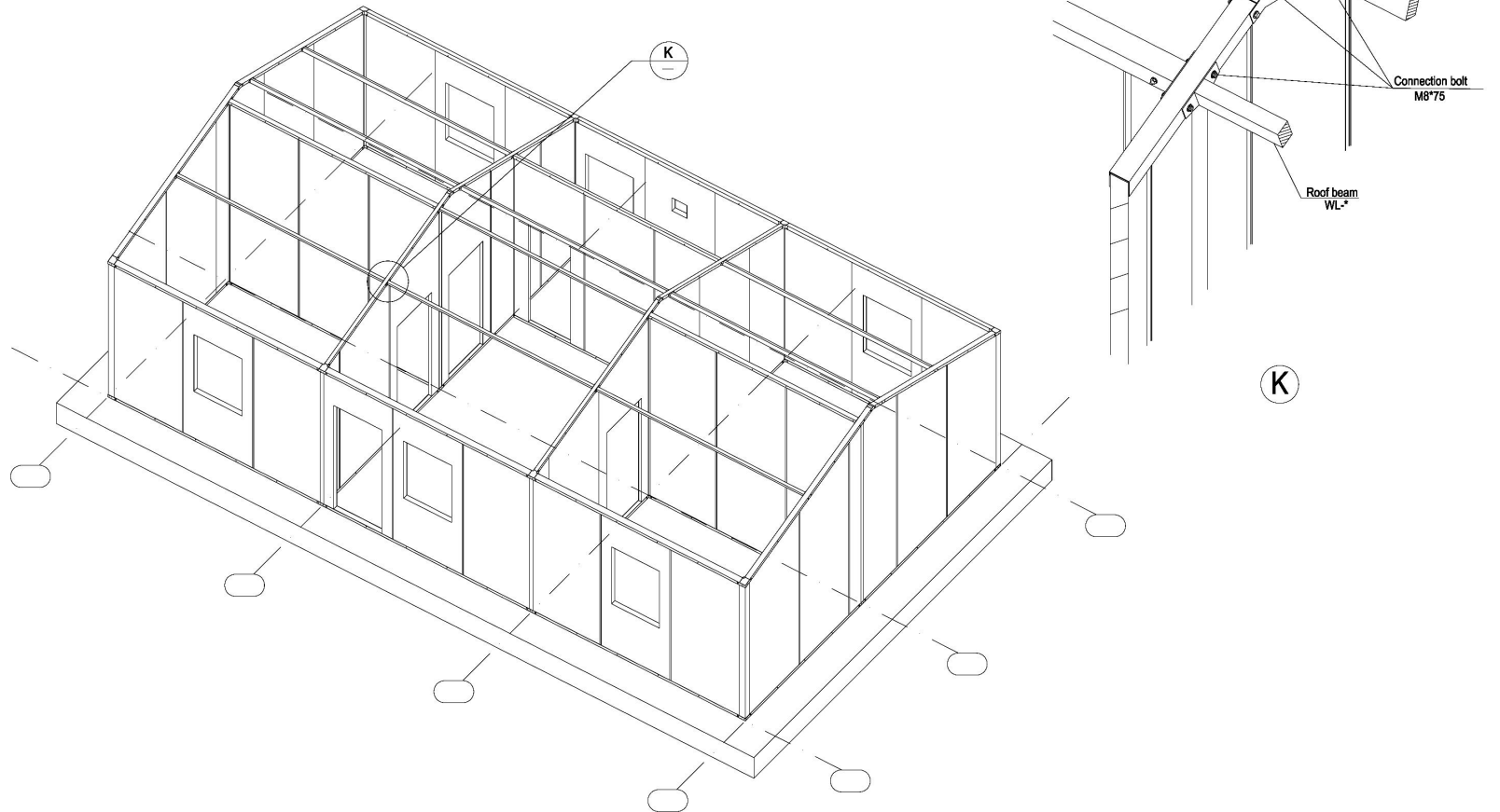
Project Features:

The customer purchased a 40HQ activity room and 40 sets of brick pattern activity room from our company in early 2011. They were satisfied with the quality of the product. When building this project, they contacted PTH again.

The project location does not have high requirements for wind speed and snow load. We have recommended mobile homes to customers, which are large and cheap, and 4 sets of container houses are prepared for storage.

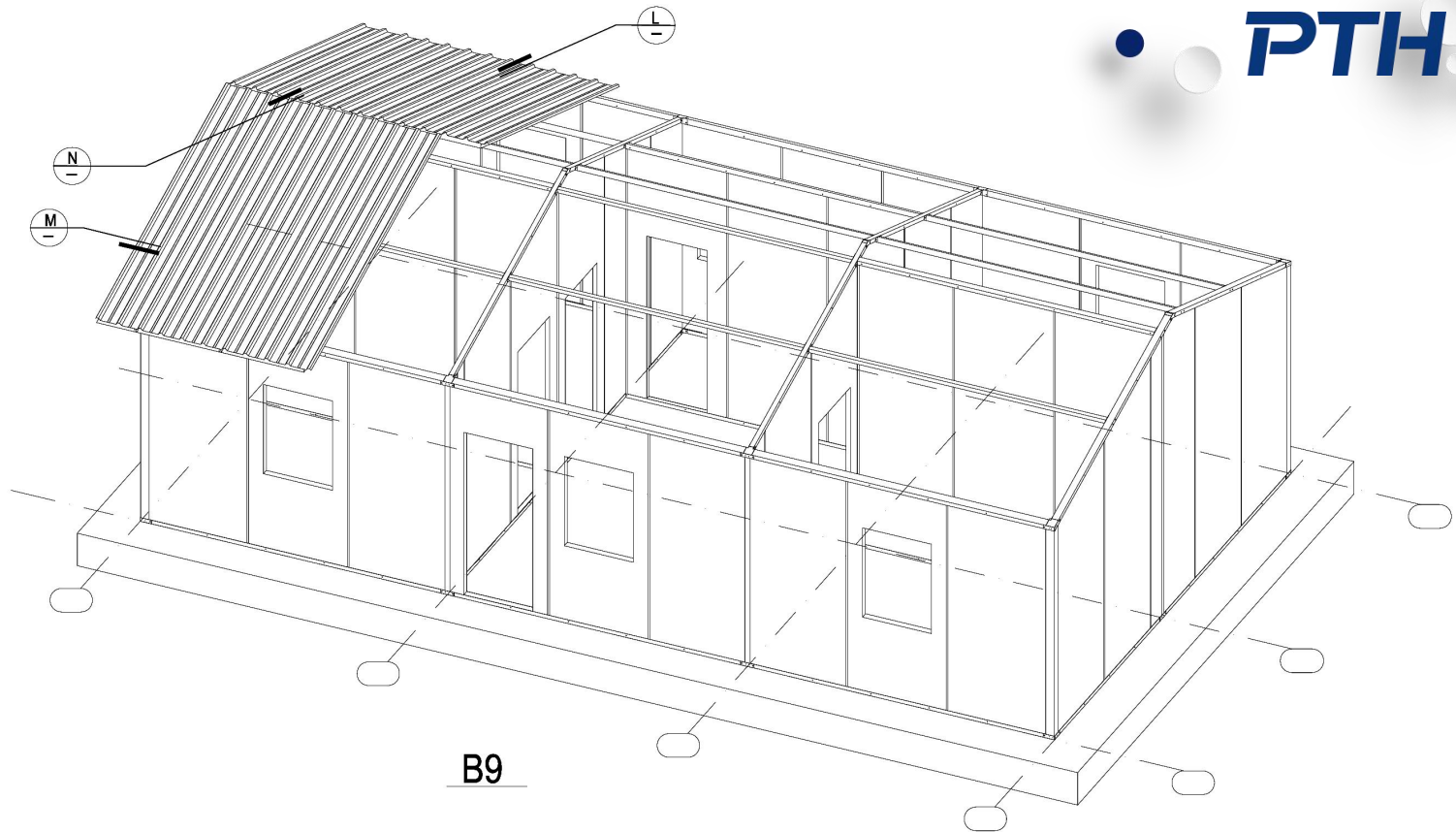
The residential area of the camp is 27 sets of single-storey buildings, mainly for economic activity houses, including accommodation, restaurants, shower rooms, toilets, storage rooms and other functions.

DESIGN

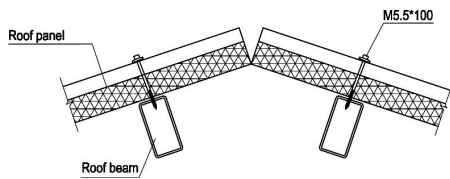


The preliminary design is made in accordance to client' s requirement and local building code. After getting the permission by local authority, PTH will do the shop drawing for production.

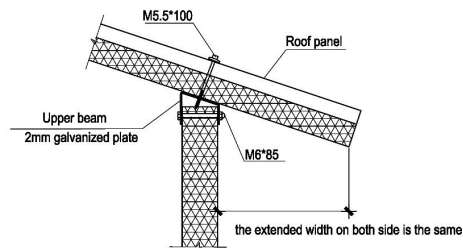
Design



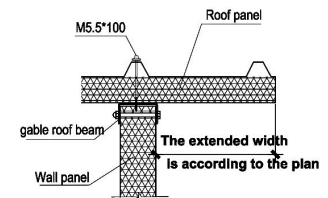
B9



N

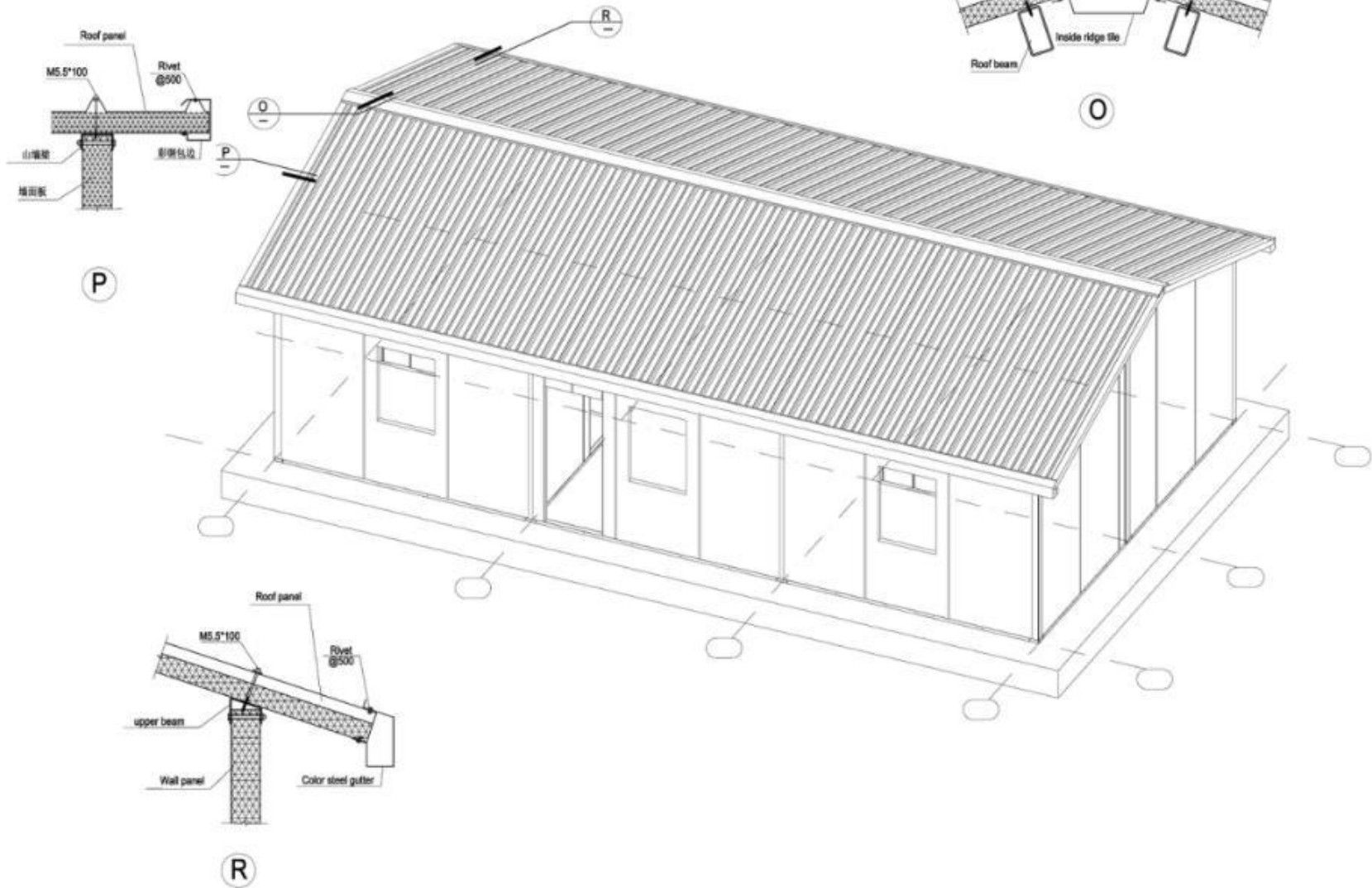


L



M

Design



PRODUCTION & DELIVERY



PROCUREMENT :

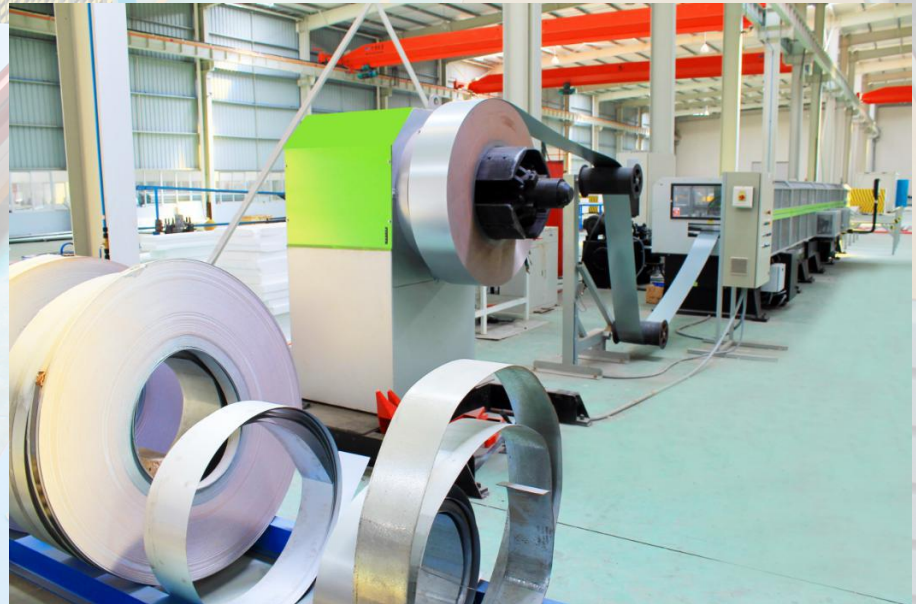
PTH has a mature procurement supply chain, including product raw materials, kitchen and bathroom accessories, home equipment and other supporting facilities. Each year, PTH conducts quality assessments of suppliers, resolutely rejects unqualified suppliers, and guarantees the quality of products from the source.

PRODUCTION :

PTH owns hundreds of fully automatic mechanized production lines, which ensures high production efficiency and timely delivery. In the manufacturing process, PTH can provide production progress reports to customers through pictures and video. PTH has a professional quality inspection team which takes strict quality control in each process, and make sure defect product never be delivered to client.

TRANSPORTATION :

PTH, who has more than 20 years of international logistics experience. can provide customers with the best transportation routes, customs declaration, commodity inspection and other services, and truly realizes "door to door."





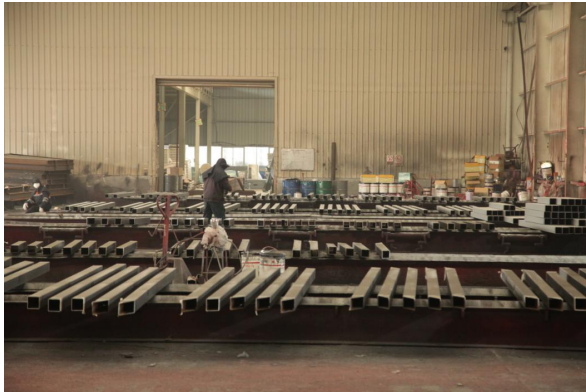
PRODUCTION



Quality is the life of an enterprise and the foundation of sustainable development. PTH strictly follows the ISO9000 quality system and makes quality control in each process from material procurement to finished product delivery.

For outsourcing raw materials and accessories, it is reported to the ICQC team for inspection. ICQC will inspect according to "Raw Material Inspection Regulations", ensure the material technical specifications and quality meet GB standards, then upload the inspection record, QC document and test report to the ERP system.

PRODUCTION



PTH makes random inspection system for the manufacturing process. IPQC makes daily random inspection according to the quality requirement of each order, so as to avoid defect products.

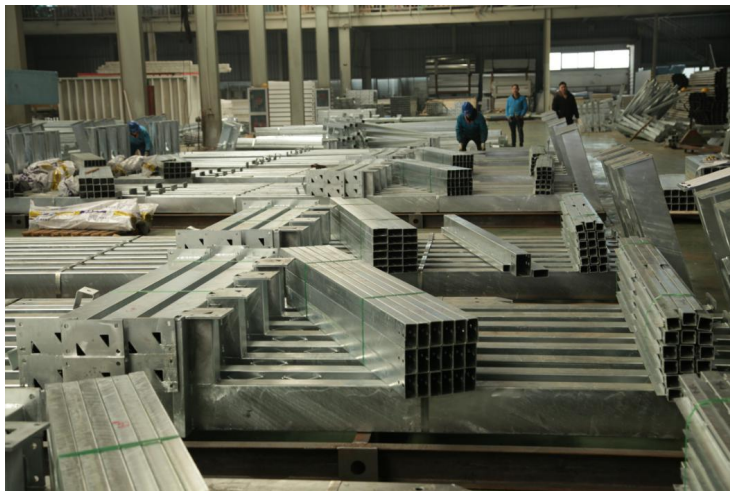
The production team also set up process quality report system. Only those qualified products can be transferred to the next process.



PACKAGE & LOADING



PTH makes the most reasonable package plan according to the structure characteristics and quality requirement. The modular package design of the spare part effectively reduce the package volume. The spare parts of each module is packed in a separate package, these small package modular combination ensures a easy transportation and installation, which in return makes the loading and unloading much easier, and greatly reduces labor cost.



INSTALLATION



PTH will provide complete and detailed installation drawings for the product. PTH has professional photography and post-production personnel who can provide installation videos for the product and intuitively demonstrate the installation steps and installation details of the product.

PTH owns on-site installation guidance experience for dozens of projects such as Mozambican light steel villa resorts, Chilean container camps, etc. It can provide EPC construction services and technical guidance according to the needs of customers to ensure the smooth and safe construction of the houses required by customers and realize real "Check-in".



CLIENT FEEDBACK



We use BIM system to manage and operate the whole project. For the maintenance, PTH provide online technical support or maintenance service on the site per client requirement. Customers have cooperated with PTH one after another since 2011. At the same price, customers recognize Putian's product quality, and the exterior design of the house is more attractive.

CLIENT FEEDBACK



URL : www.pthhouse.com / www.putianhouse.com
E-mail : inquiry@putianhouse.com

CLIENT FEEDBACK



**URL : www.pthhouse.com / www.putianhouse.com
E-mail : inquiry@putianhouse.com**