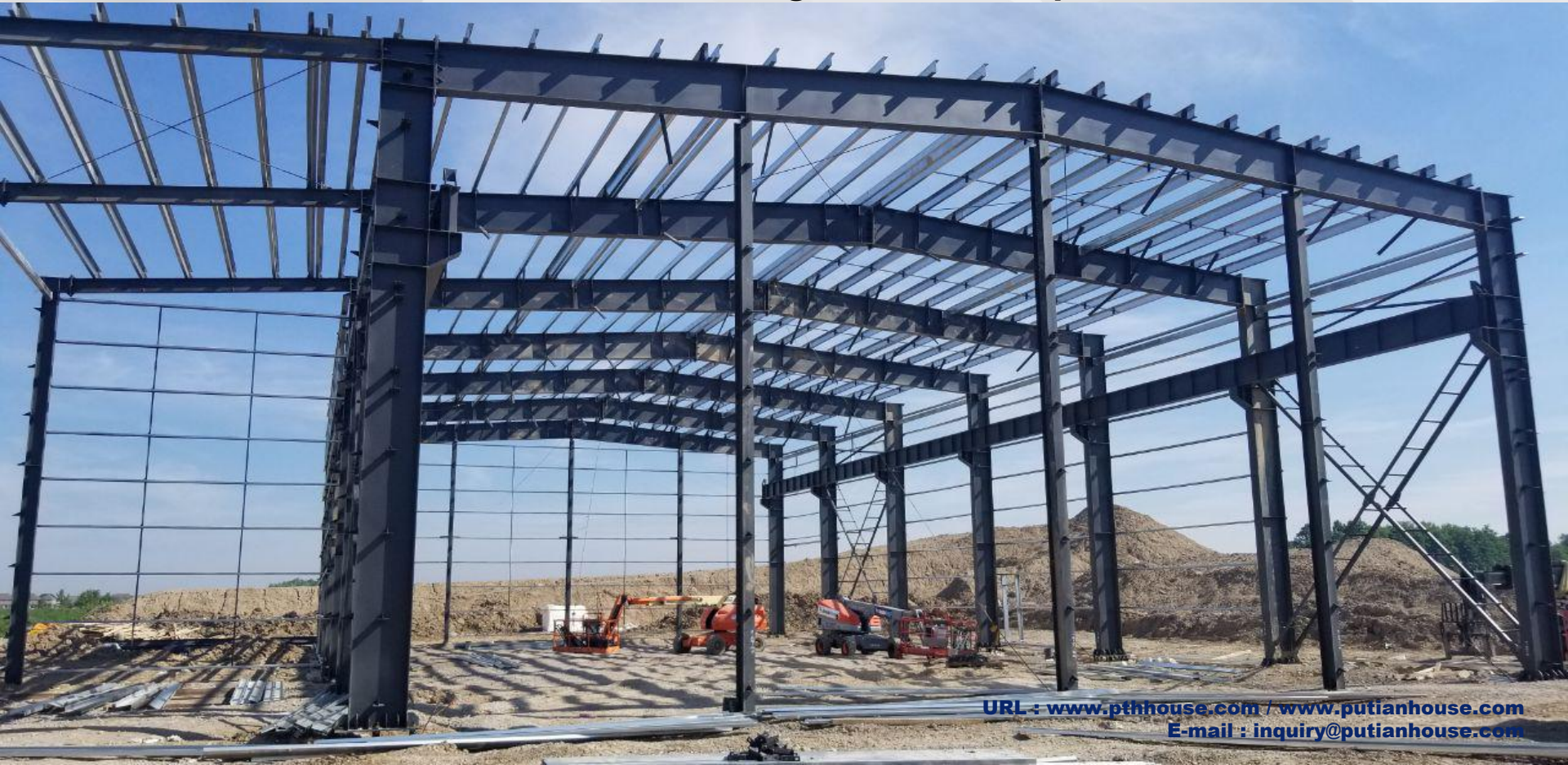


# Canada steel structure plant

- 1. Project No : PT170200
- 2. Project time : 2017
- 3. Project site : Canada
- 4. Project scale : 1291m<sup>2</sup>
- 5. Product type : Steel structure
- 6. Usage : Steel plant
- 7. Project features: all steel and maintenance materials are provided with test reports, and comply with North American standards, and welding meets the requirements of CSA



# Project Design



PTH has more than 100 R&D design and technical engineers from home and abroad, and provides customized design services. Using the relevant information data of the construction project as the basis of the model, the building model is established, and the real information of the building is simulated through digital information simulation. At present, we have completed the research and development of the Revit family library of various products of the company, laying the foundation for efficient and accurate design, and at the same time can fully show the detailed nodes and 3D renderings of our company's products to customers.

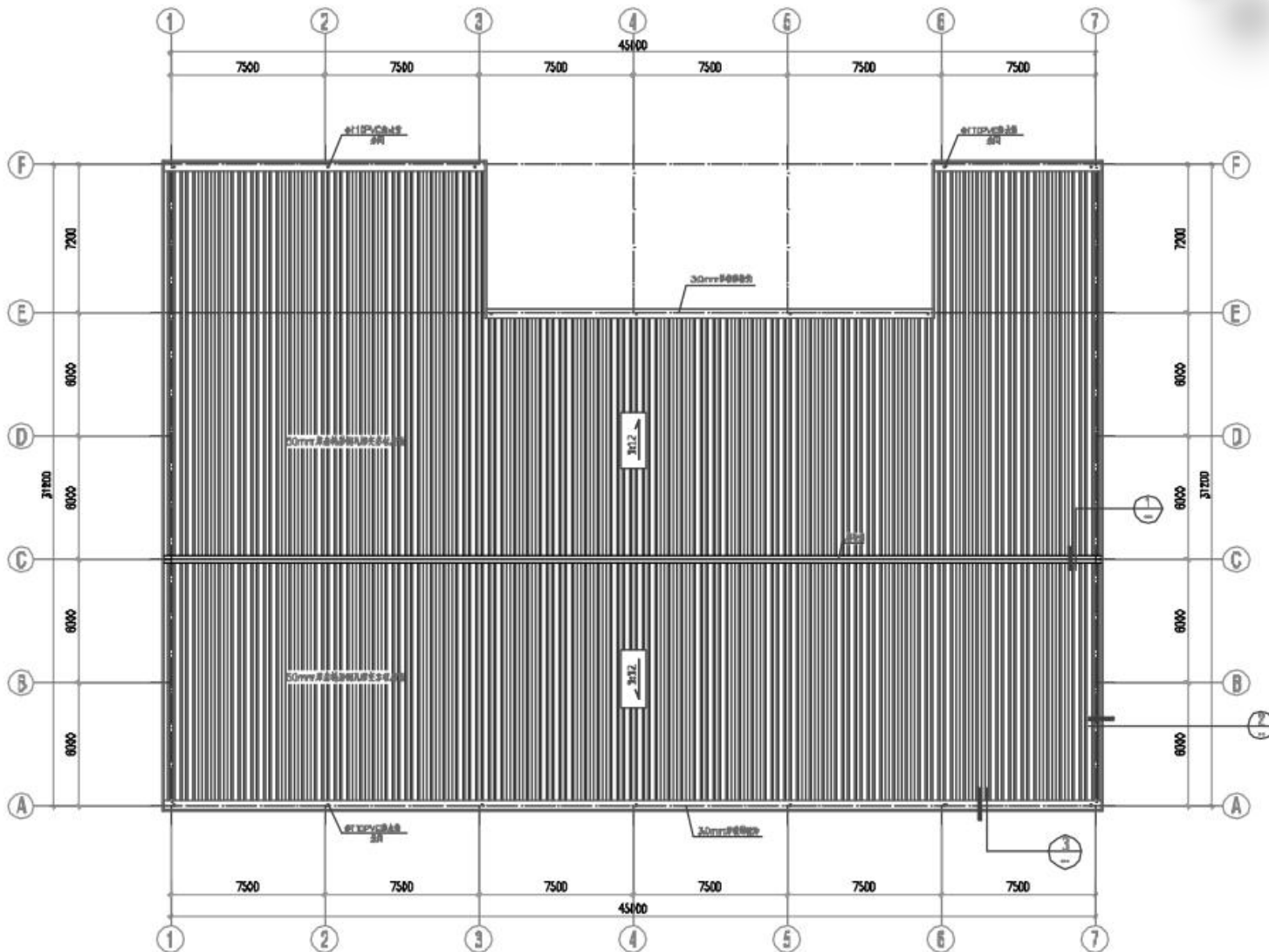
## Project Features:

The project is a 1,291-square-meter steel structure workshop located in Canada. The overall building is 45.755m long and 31.63m wide. A 20-ton electric hoist bridge crane is installed inside the workshop.

Welding and maintenance materials for steel structures must meet North American standards. Customers have higher requirements for paint and welding. All steel and maintenance materials must provide test reports and comply with North American standards. Welding must meet the requirements of CSA .

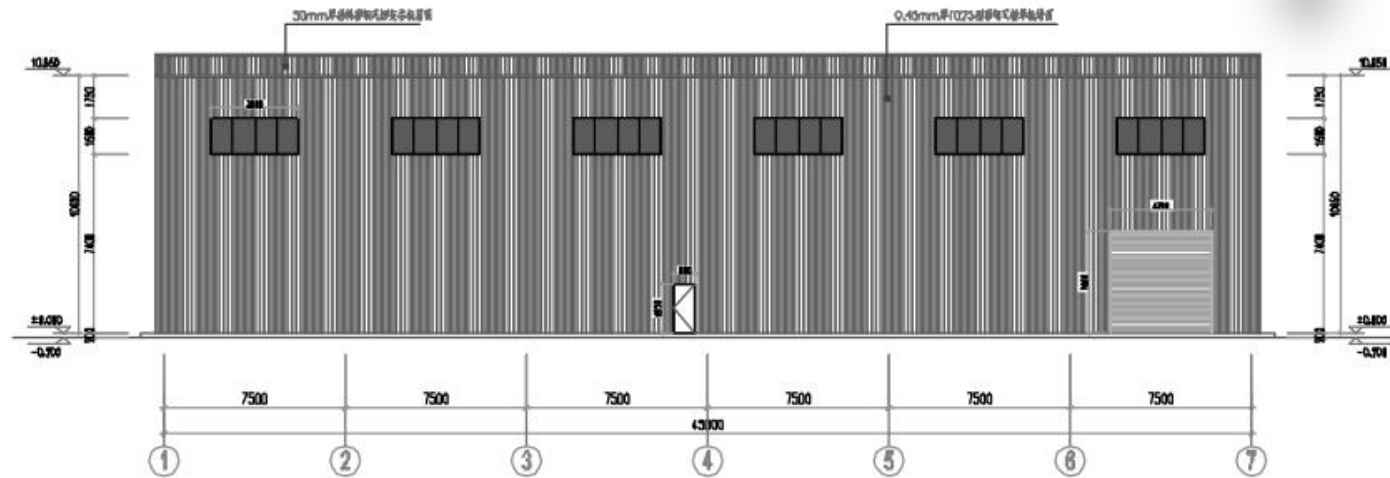


# Design

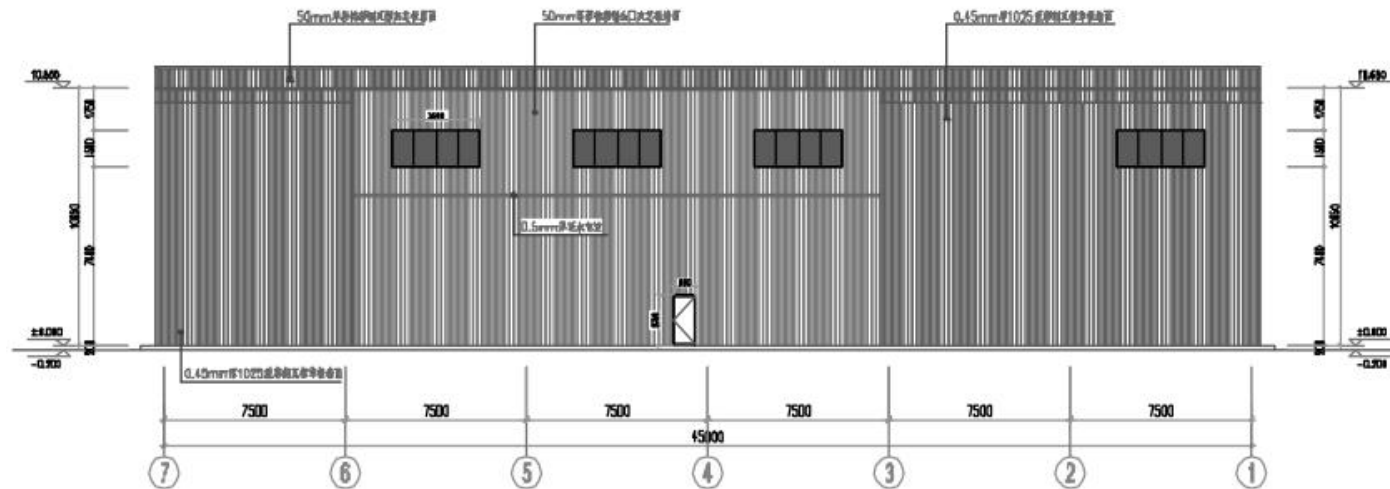


PTH's design drawings are designed according to customer needs and local building codes. After obtaining the local government's permission, the design can be further refined after the local government's review.

# Design



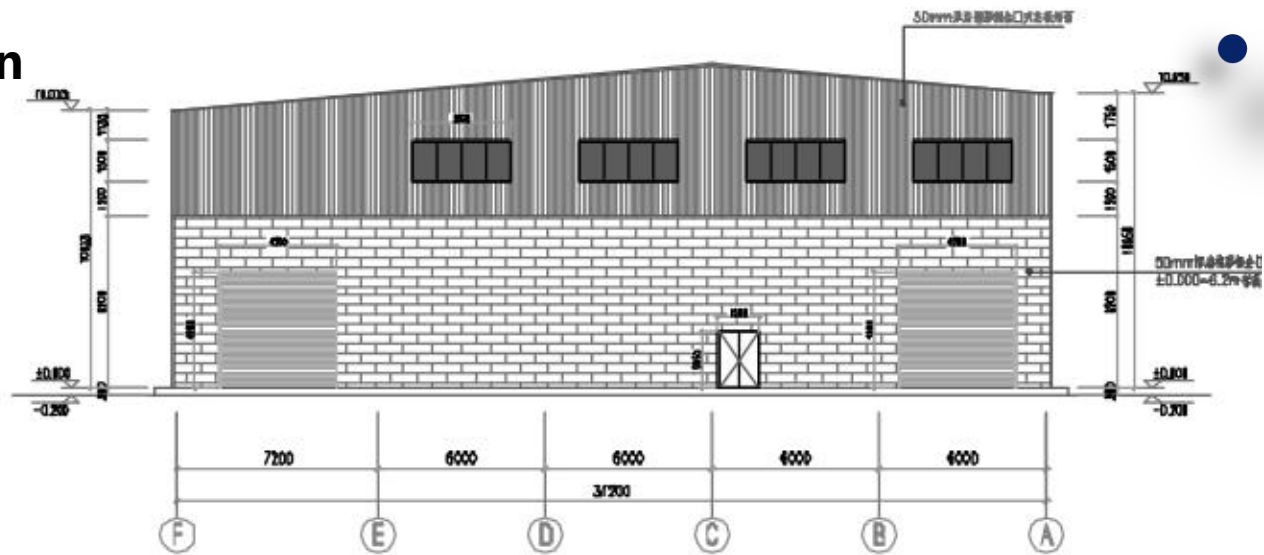
A轴立面图



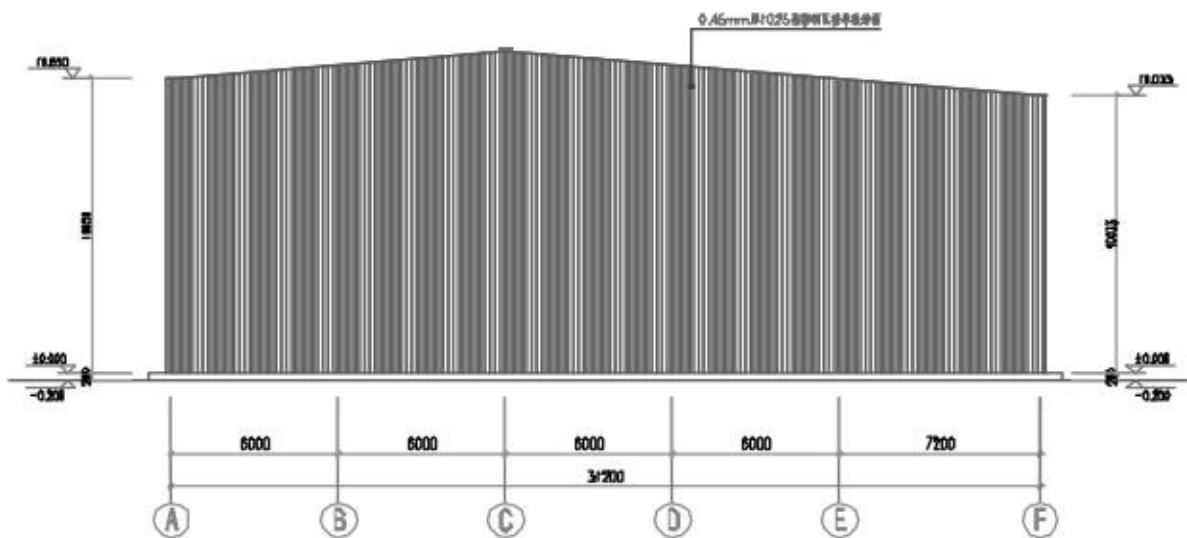
P轴立面图



# Design



1轴立面图



7轴立面图

# Production delivery



## **purchase**

PTH has a mature procurement supply chain, including product raw materials, kitchen and bathroom accessories, household equipment and other supporting facilities.

## **produce:**

PTH has hundreds of fully automated mechanized production lines, which can be combined with efficient production arrangements to provide a strong guarantee for timely delivery of customer orders.

## **transport:**

PTH has more than 10 years of international logistics experience, and can provide customers with the best transportation routes, customs declaration, commodity inspection and other services.





# Project production scenarios



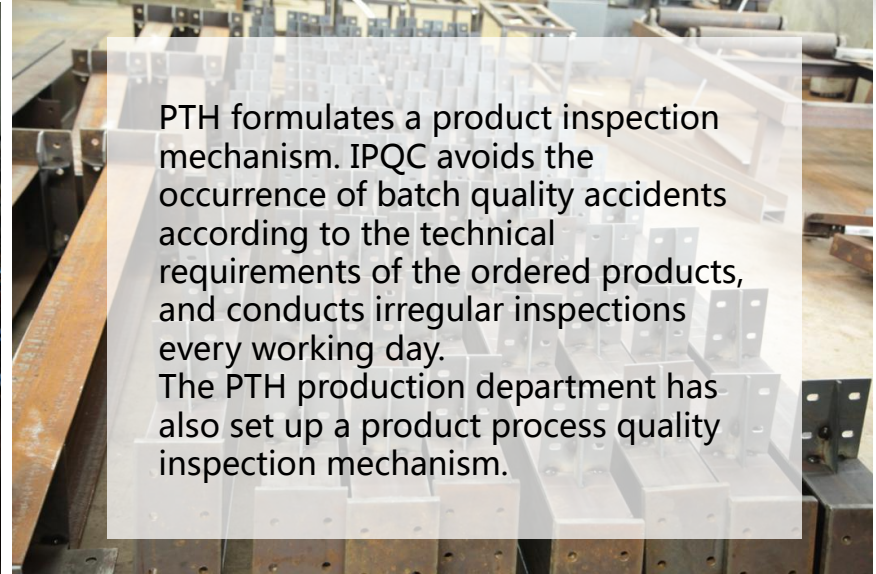
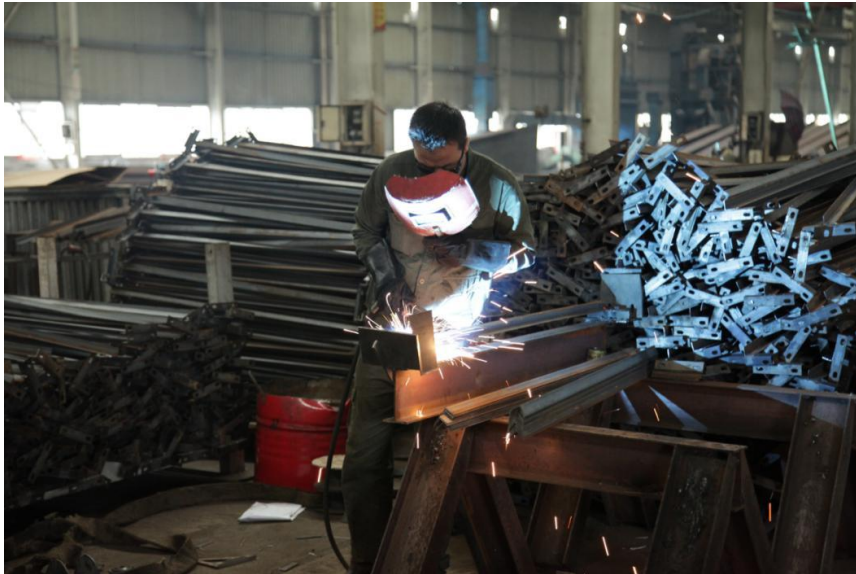
PTH follows the ISO9000 quality system document framework, and manages and controls the products. From the beginning of raw material procurement, we strictly control and control.

The original and auxiliary materials and outsourced products need to be inspected. ICQC conducts inspection according to the "original and auxiliary material inspection standards" and confirms that the material quality/information meets the requirements of the design specifications. ICQC uploads the material inspection records, quality documents, and experimental reports to the ERP system





# Project production scenarios

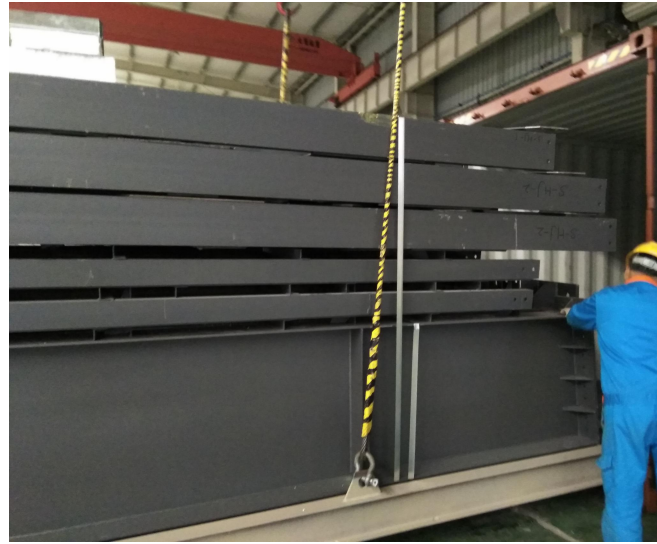




## Packing and loading



PTH designs reasonable packaging solutions based on product characteristics/customer requirements. Each unit component adopts independent small packaging, which is convenient for transportation and installation. At the same time, it is easy to load and unload, which reduces the labor cost.



URL : [www.pthhouse.com](http://www.pthhouse.com) / [www.putianhouse.com](http://www.putianhouse.com)  
E-mail : [inquiry@putianhouse.com](mailto:inquiry@putianhouse.com)

# Project installation



PTH will provide complete and detailed installation drawings for the products. We have professional photography and post personnel, can provide installation video for the product, intuitively display the installation steps and installation details of the product.

PTH has on-site installation guidance experience for dozens of projects such as Mozambique Light Steel Villa Resort and Chile Container Camp. It can provide EPC construction services and technical guidance according to customer needs to ensure the smooth and safe construction of the houses required by customers.





## Installation on site



URL : [www.pthhouse.com](http://www.pthhouse.com) / [www.putianhouse.com](http://www.putianhouse.com)  
E-mail : [inquiry@putianhouse.com](mailto:inquiry@putianhouse.com)



# Installation on site





## Installation on site





## Installation on site



URL : [www.pthhouse.com](http://www.pthhouse.com) / [www.putianhouse.com](http://www.putianhouse.com)  
E-mail : [inquiry@putianhouse.com](mailto:inquiry@putianhouse.com)

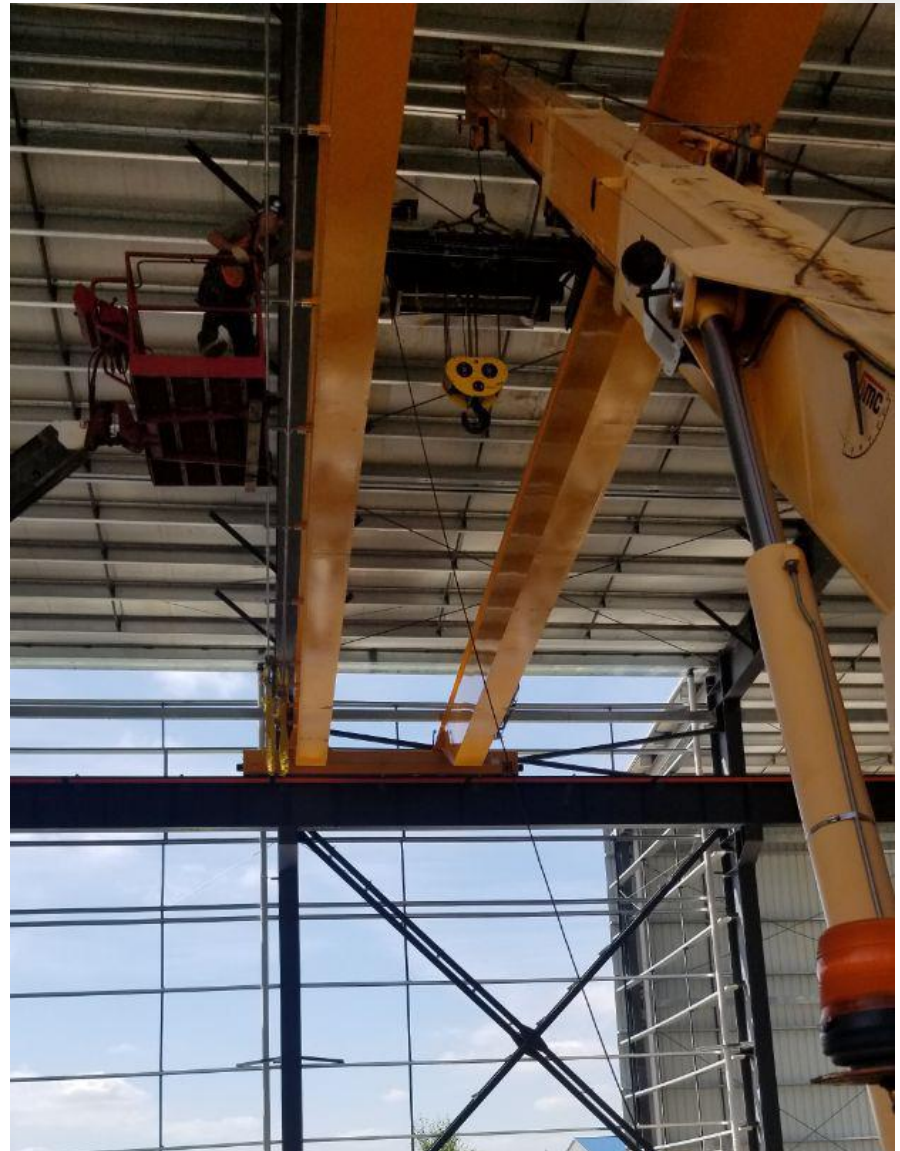


## Installation on site





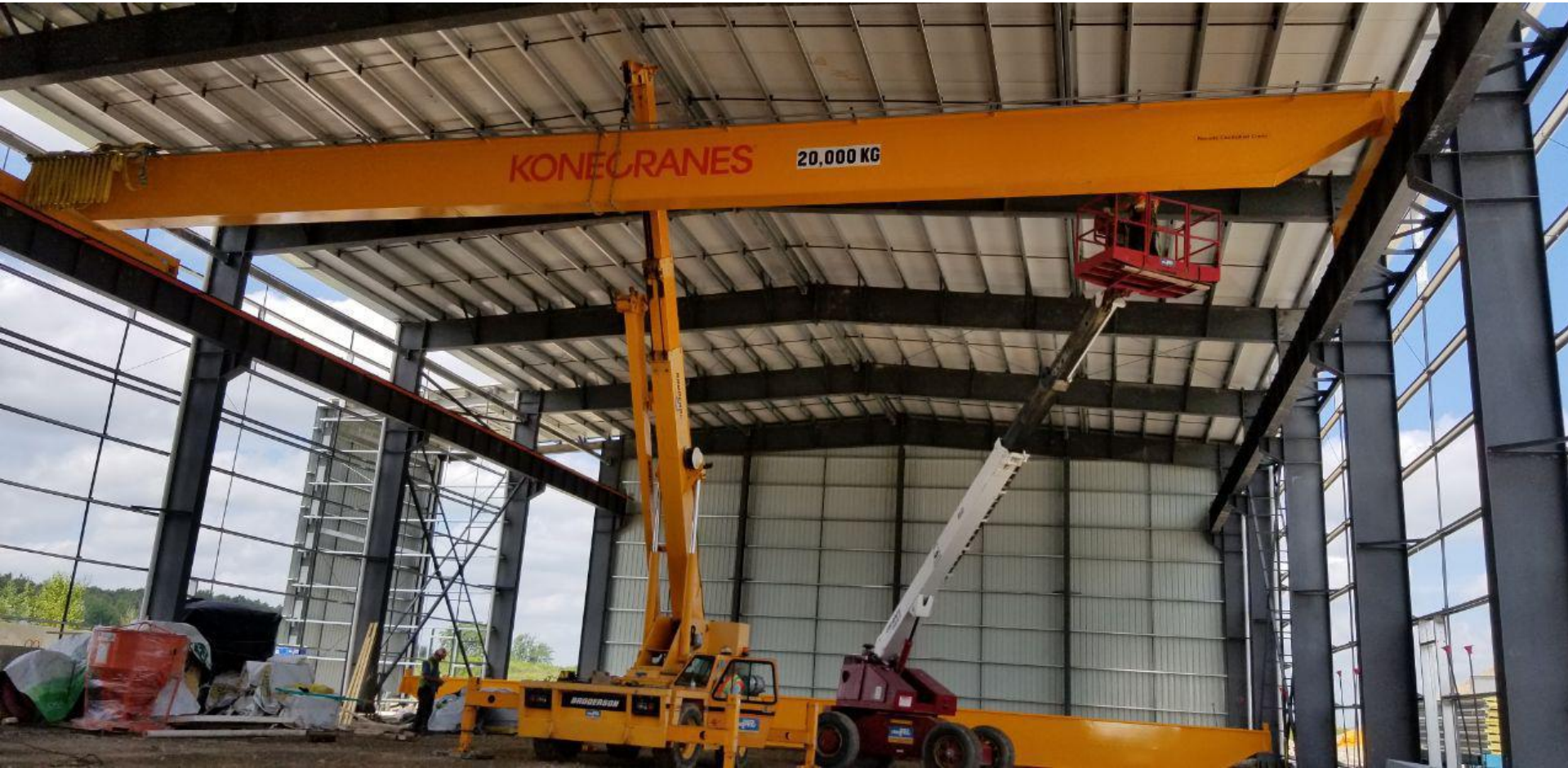
## Installation on site



URL : [www.pthhouse.com](http://www.pthhouse.com) / [www.putianhouse.com](http://www.putianhouse.com)  
E-mail : [inquiry@putianhouse.com](mailto:inquiry@putianhouse.com)



## Installation on site





## Installation on site

