

PTH

Australian Steel Structure Warehouse

1. Project Date : Year 2013-2014
2. Location : Australia
3. Scale : 756m²
4. Category : Steel structure
5. Function : Warehouse
6. Characteristics : Expansion of a factory building for waste recycling and stacking of related equipment, which has high requirements on the thermal insulation function of the wallboard, and adopts wall lighting



PROJECT DESIGN

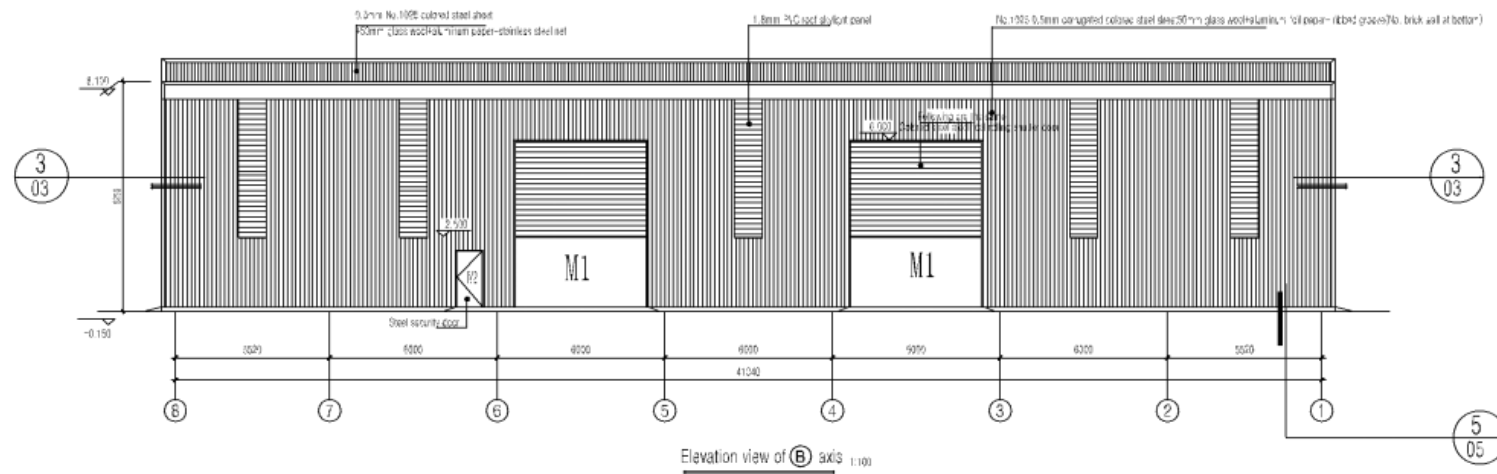
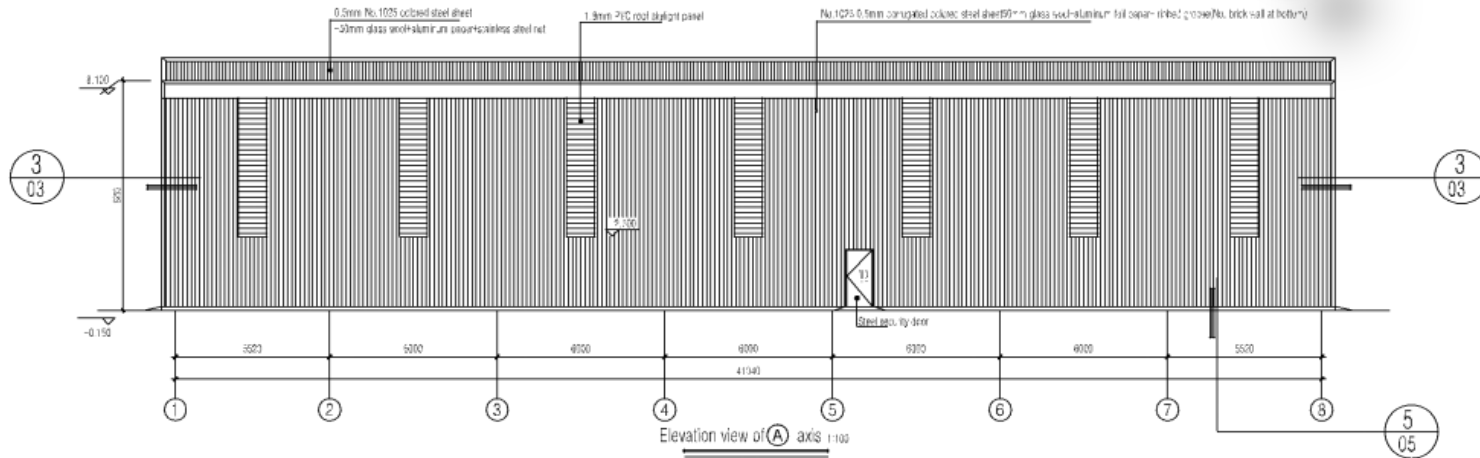


PTH owns 100+ architect and engineers at home and abroad, to provide customized design service for client with different requirements. We use the relevant information data of construction projects as the basis of the model to build the building model, and simulate the real information of the building through digital information simulation.

At present, we have finished the Revit research and development of company's products, laying a solid foundation to finish design effectively and accurately and also presenting details and three dimensional effects of our company's products to customers.

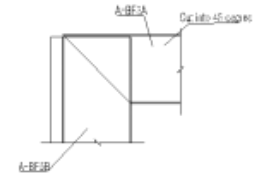
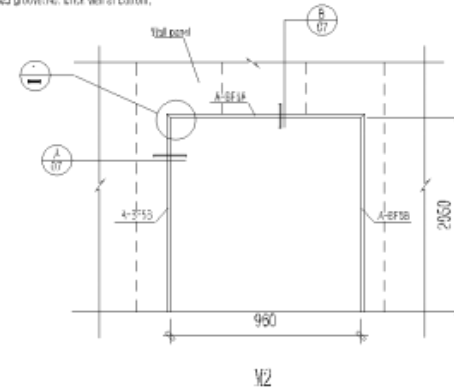
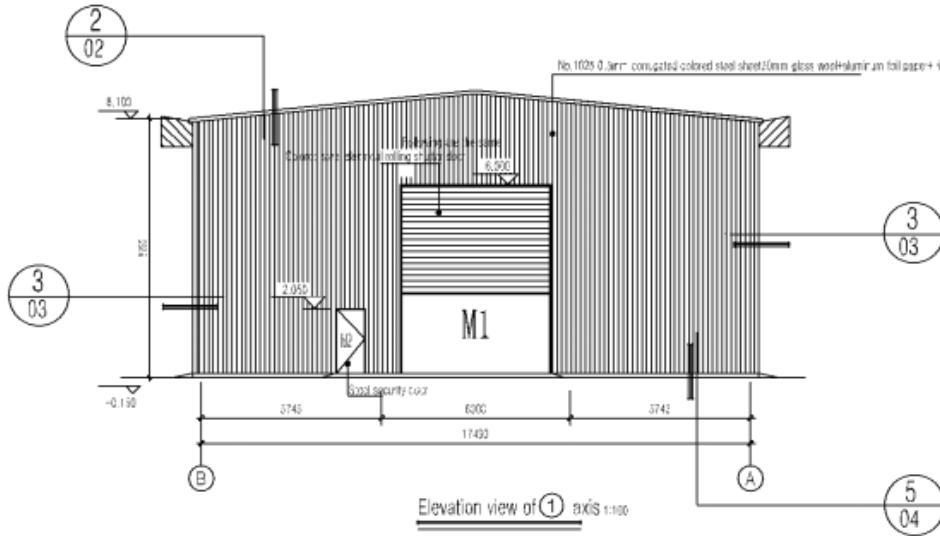
Project characteristics : The client of this project is an environmental protection company. The company's business is spread all over Oceania. Due to the subsequent need to expand the plant for waste recycling and related equipment stacking, PTH is used as a backup procurement supplier. After the exchange, it was finally determined that PTH would provide the entire steel structure. In terms of materials, the steel structure of this project is used as a factory. Customers have certain requirements for the thermal insulation of steel. The single-board thermal insulation cannot meet the requirements, and the sandwich panel price is higher, so the solution given by PTH All the walls are made of 0.5mm1025 color steel veneer + 50mm glass insulation cotton + aluminum foil paper + ribbed groove; there is a certain difference between the roof and the wall, the roof pad aluminum foil paper, the material is 0.5mm1025 type color steel veneer + 50mm glass insulation cotton + aluminum foil paper + stainless steel wire mesh.

DESIGN



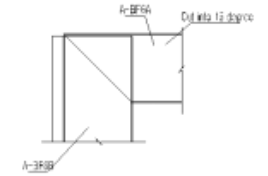
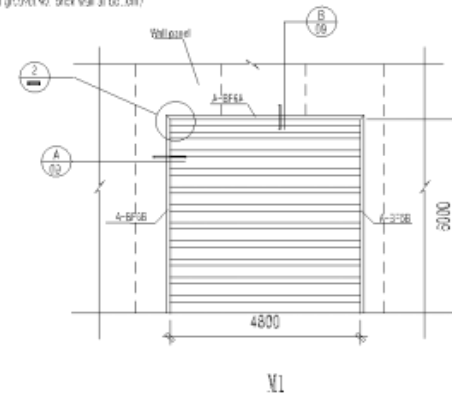
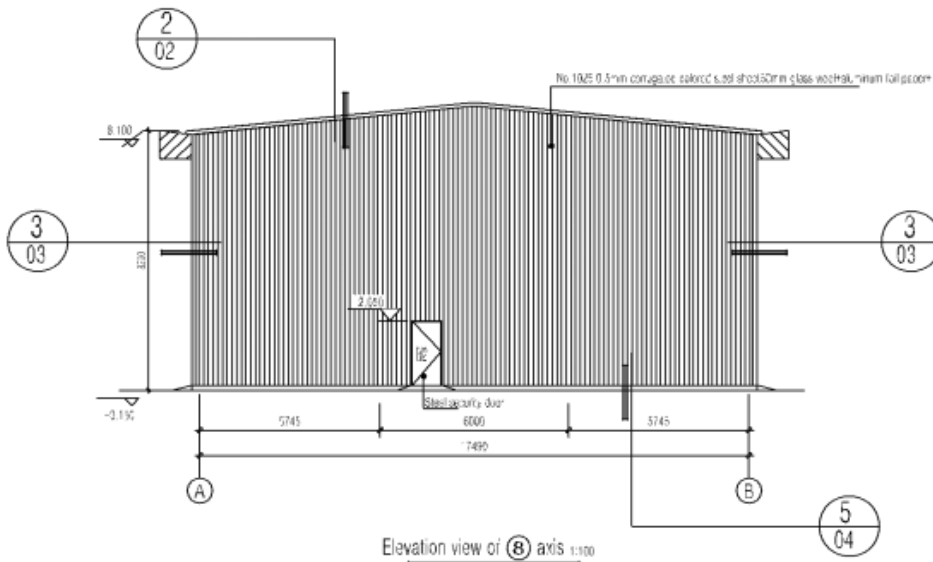
The preliminary design is made in accordance to client' s requirement and local building code. After getting the permission by local authority, PTH will do the shop drawing for production.

DESIGN



Put A-BF3B inside of A-BF1A (Cont need to cut into specific angle)

1



Put A-BF3B inside of A-BF1A (Cont need to cut into specific angle)

2

PRODUCTION & DELIVERY



PROCUREMENT :

PTH has a mature procurement supply chain, including product raw materials, kitchen and bathroom accessories, home equipment and other supporting facilities. Each year, PTH conducts quality assessments of suppliers, resolutely rejects unqualified suppliers, and guarantees the quality of products from the source.



PRODUCTION :

PTH owns hundreds of fully automatic mechanized production lines, which ensures high production efficiency and timely delivery. In the manufacturing process, PTH can provide production progress reports to customers through pictures and video. PTH has a professional quality inspection team which takes strict quality control in each process, and make sure defect product never be delivered to client.



TRANSPORTATION :

PTH, who has more than 20 years of international logistics experience. can provide customers with the best transportation routes, customs declaration, commodity inspection and other services, and truly realizes "door to door."

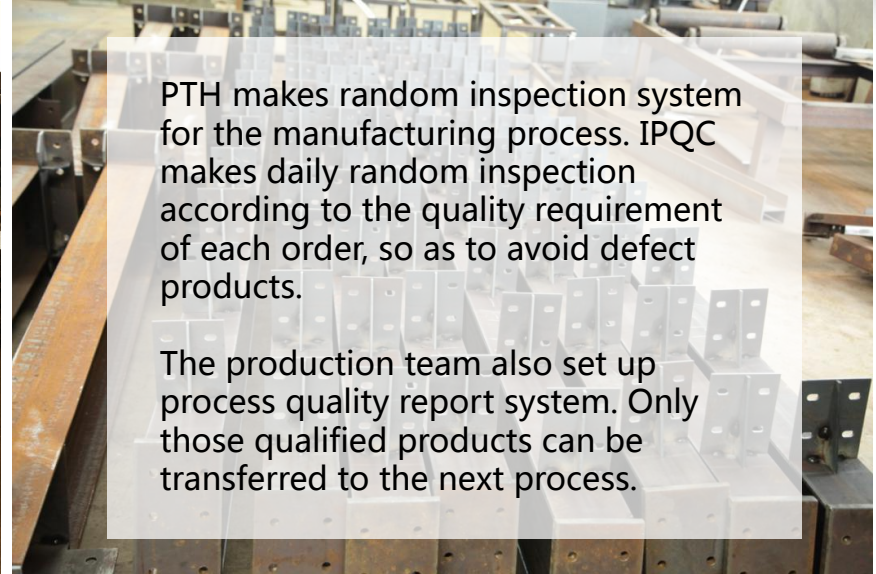
PRODUCTION PICTURES



Quality is the life of an enterprise and the foundation of sustainable development. PTH strictly follows the ISO9000 quality system and makes quality control in each process from material procurement to finished product delivery.

For the outsourcing raw material and accessories, it is reported to the ICQC team for inspection. ICQC will inspect according to "Raw Material Inspection Regulations", make sure the material technical specs and quality meet GB standard, then upload the inspection record, QC document and test report to the ERP system.

PRODUCTION PICTURES



PTH makes random inspection system for the manufacturing process. IPQC makes daily random inspection according to the quality requirement of each order, so as to avoid defect products.

The production team also set up process quality report system. Only those qualified products can be transferred to the next process.



PACKAGE & LOADING



PTH makes the most reasonable package plan according to the structure characteristics and quality requirement. The modular package design of the spare part effectively reduce the package volume. The spare parts of each module is packed in a separate package, these small package modular combination ensures a easy transportation and installation, which in return makes the loading and unloading much easier, and greatly reduces labor cost.



PACKAGE & LOADING



INSTALLATION



PTH will provide complete and detailed installation drawings for the product. PTH has professional photography and post-production personnel who can provide installation videos for the product and intuitively demonstrate the installation steps and installation details of the product.

PTH owns on-site installation guidance experience for dozens of projects such as Mozambican light steel villa resorts, Chilean container camps, etc. It can provide EPC construction services and technical guidance according to the needs of customers to ensure the smooth and safe construction of the houses required by customers and realize real "Check-in".

Local installation

PTH.



**URL : www.pthouse.com / www.putianhouse.com
E-mail : inquiry@putianhouse.com**

Local installation



Local installation



Local installation



CLIENT FEEDBACK



We use BIM system to manage and operate the whole project. For the maintenance, PTH provide online technical support or maintenance service on the site per client requirement.

In the follow-up work, the reaction rate of PTH is relatively fast, and the follow-up to the project is very fast. In the revision of the drawing, an average of 2-3 days can be completed once. The entire cooperation process makes the customer feel very moved. After the completion of the project, the customer purchased a batch of H-beams from PTH, and subsequently recommended seven new customers to come over.

Project feedback picture

