

PTH

40m² LGS villa in Uruguay

1. Project No. : PTVNWK16002

2. Date : 2016

3. Location : Uruguay

4. Scale : 3 sets LGS villa

5. Category : LGS villa

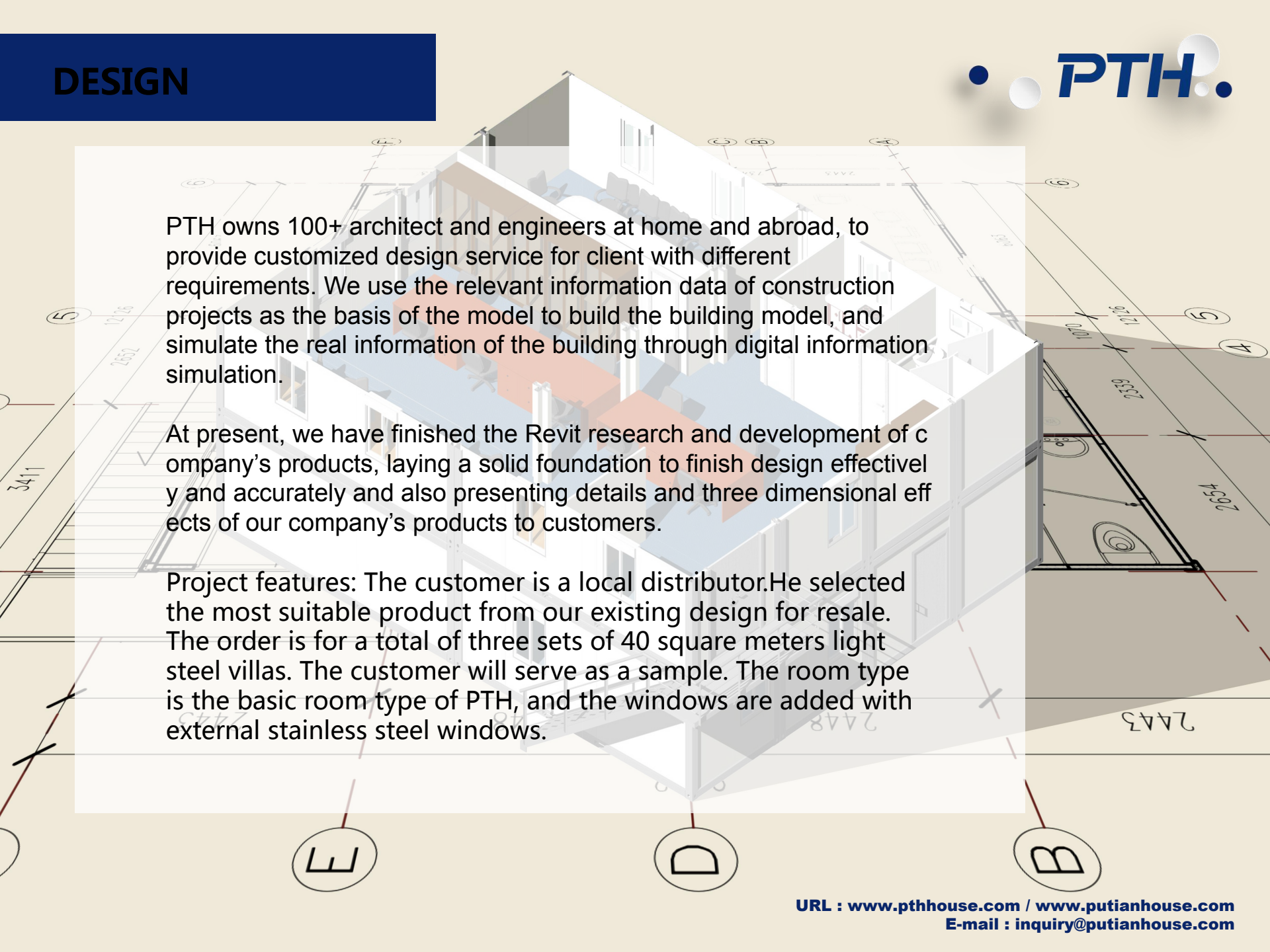
6. Function: Resell

7. Characteristics: small-sized light steel villas, economical prefabricated houses



URL : www.pthhouse.com / www.putianhouse.com

E-mail : inquiry@putianhouse.com

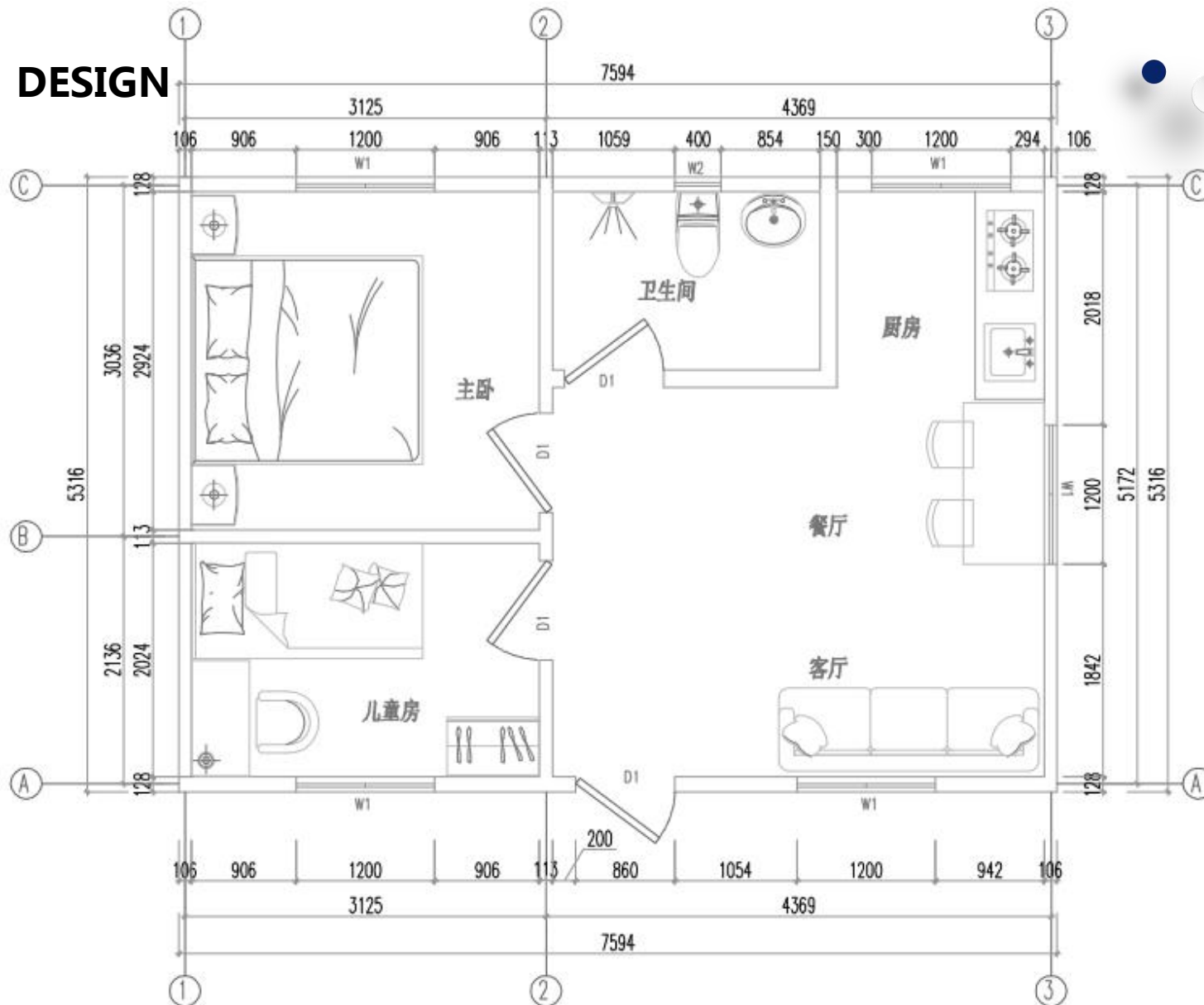
The background of the slide is a 3D architectural rendering of a building model. The model is a long, rectangular structure with a flat roof and several windows. It is shown in a perspective view, with a grid of lines and dimensions overlaid on it. The dimensions include 3411, 12126, 2652, 2654, 2639, 12126, 2643, and 2648. The model is colored in shades of blue, orange, and white. The text is overlaid on the model.

PTH owns 100+ architect and engineers at home and abroad, to provide customized design service for client with different requirements. We use the relevant information data of construction projects as the basis of the model to build the building model, and simulate the real information of the building through digital information simulation.

At present, we have finished the Revit research and development of company's products, laying a solid foundation to finish design effectively and accurately and also presenting details and three dimensional effects of our company's products to customers.

Project features: The customer is a local distributor. He selected the most suitable product from our existing design for resale. The order is for a total of three sets of 40 square meters light steel villas. The customer will serve as a sample. The room type is the basic room type of PTH, and the windows are added with external stainless steel windows.

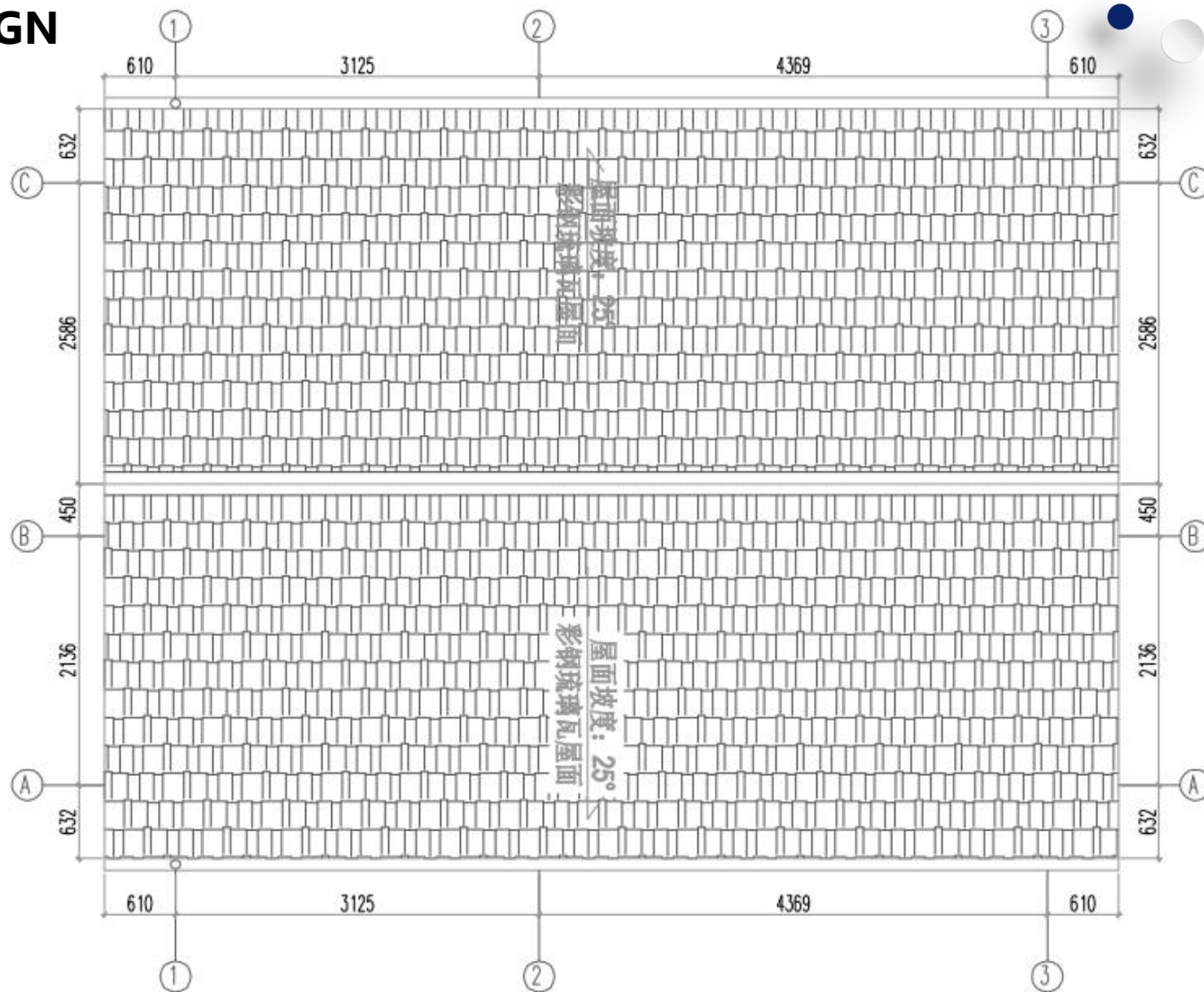
DESIGN



The preliminary design is made in accordance to client's requirement and local building code. After getting the permission by local authority, PTH will do the shop drawing for production.

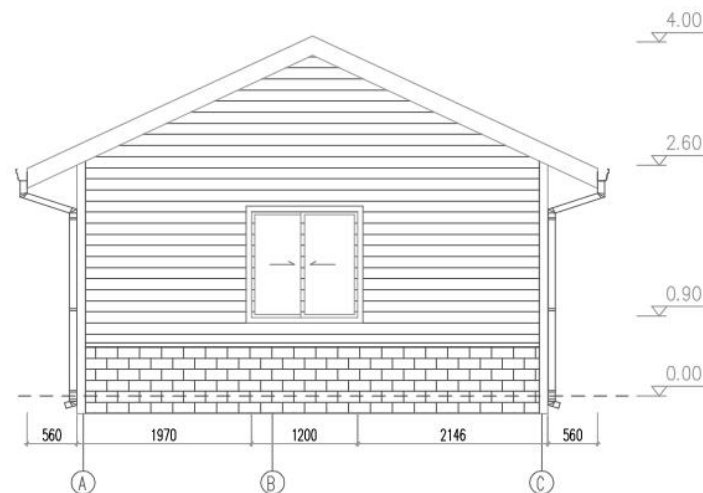
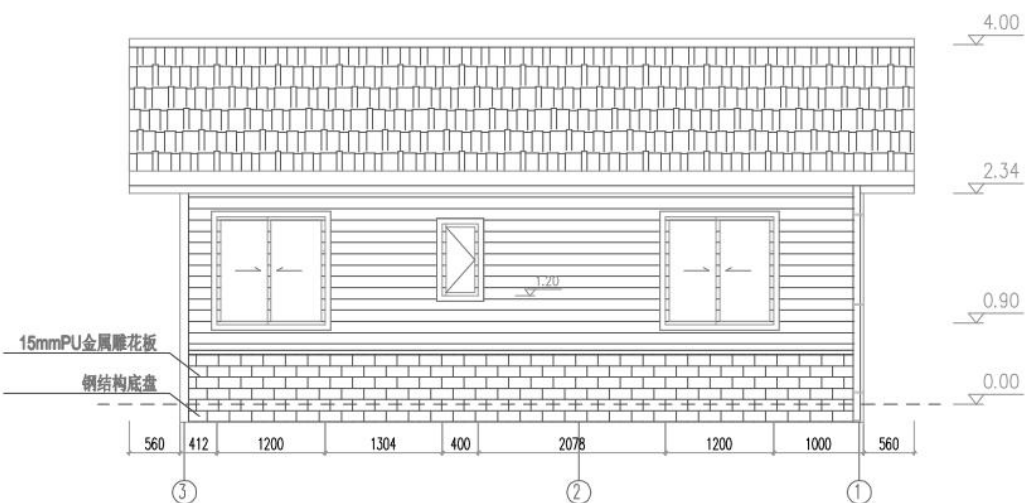
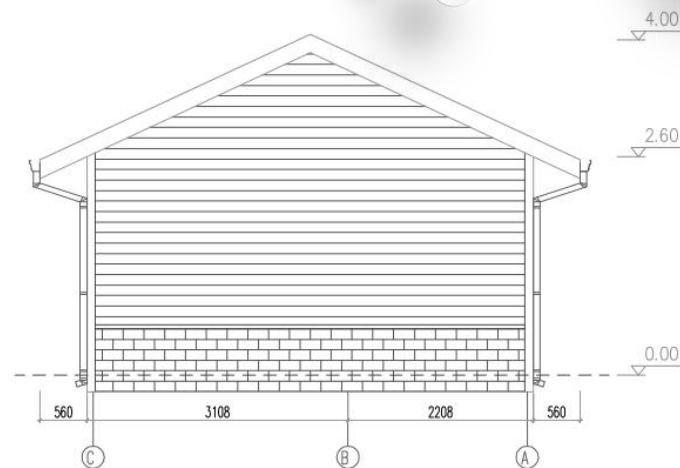
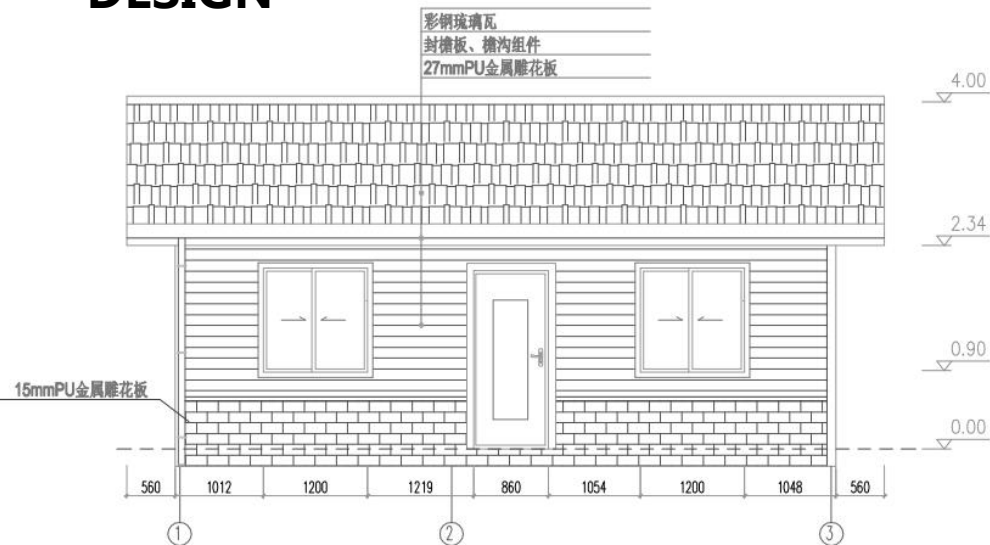
平面布置图

DESIGN



屋面布置图

DESIGN



PRODUCTION & DELIVERY



PROCUREMENT :

PTH has a mature procurement supply chain, including product raw materials, kitchen and bathroom accessories, home equipment and other supporting facilities. Each year, PTH conducts quality assessments of suppliers, resolutely rejects unqualified suppliers, and guarantees the quality of products from the source.

PRODUCTION :

PTH owns hundreds of fully automatic mechanized production lines, which ensures high production efficiency and timely delivery. In the manufacturing process, PTH can provide production progress reports to customers through pictures and video.

PTH has a professional quality inspection team which takes strict quality control in each process, and make sure defect product never be delivered to client.

TRANSPORTATION :

PTH, who has more than 20 years of international logistics experience. can provide customers with the best transportation routes, customs declaration, commodity inspection and other services, and truly realizes "door to door."



PRODUCTION PICTURES



Quality is the life of a enterprise and the foundation of sustainable development. PTH strictly follows the ISO9000 quality system and make quality control in each process from material procurement to finish product delivery.

For the outsourcing raw material and accessories, it is reported to the ICQC team for inspection. ICQC will inspect according to "Raw Material Inspection Regulations", make sure the material technical specs and quality meets GB standard, then upload the inspection record, QC document and test report to ERP system.

PRODUCTION PICTURES



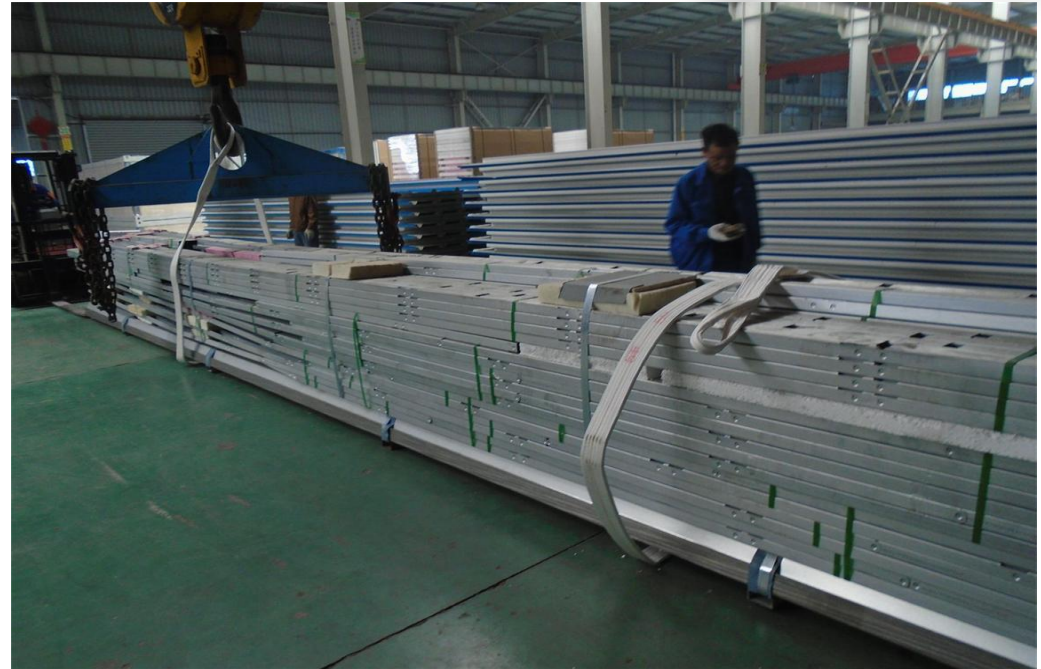
PTH makes random inspection system for the manufacturing process. IPQC makes daily random inspection according to the quality requirement of each order, so as to avoid defect products.

The production team also set up process quality report system. Only those qualified products can be transferred to the next process.

PACKAGE & LOADING



PTH designs reasonable packaging scheme according to product structure characteristics / customer quality requirements. PTH adopts the unit design of parts in packaging, which effectively reduces the product packaging volume. Each unit part adopts independent small packaging, and multiple small packages are combined to form an overall packaging convenient for transportation and installation. And because of the overall packaging, it is convenient for loading and unloading, reducing the labor cost.



INSTALLATION



PTH will provide complete and detailed installation drawings for the product. PTH has professional photography and post-production personnel who can provide installation videos for the product and intuitively demonstrate the installation steps and installation details of the product.

PTH owns on-site installation guidance experience for dozens of projects such as Mozambican light steel villa resorts, Chilean container camps, etc. It can provide EPC construction services and technical guidance according to the needs of customers to ensure the smooth and safe construction of the houses required by customers and realize real "Check-in".

INSTALLATION



INSTALLATION



INSTALLATION



URL : www.pthhouse.com / www.putianhouse.com
E-mail : inquiry@putianhouse.com

CLIENT FEEDBACK



We use BIM system to manage and operate the whole project. For the maintenance, PTH provide online technical support or maintenance service on the site per client requirement. Due to the popularity of light steel in the local area, the customer also has a professional team. Besides the foundation, the customer completed the construction of the entire sample room in only 15 days.

CLIENT FEEDBACK



CLIENT FEEDBACK



URL : www.pthhouse.com / www.putianhouse.com
E-mail : inquiry@putianhouse.com

CLIENT FEEDBACK



CLIENT FEEDBACK



CLIENT FEEDBACK

